

Pre-visit Guide

This is a step-by-step guide to visiting Zoellner Arts Center with helpful information and tips for visiting.

Where is Zoellner Arts Center – The arts center is located on the campus of Lehigh University at the corner of Fillmore St. and E. Packer Ave.

Address: 420 E. Packer Ave, Bethlehem, PA

Box Office: 610.758.2787 x0

Email: inzactix@lehigh.edu

www.zoellnerartscenter.org

Most shows are reserved seating, but if a show is General Admission that means you may sit anywhere. ADA seating sections include both seats and wheelchair spaces.

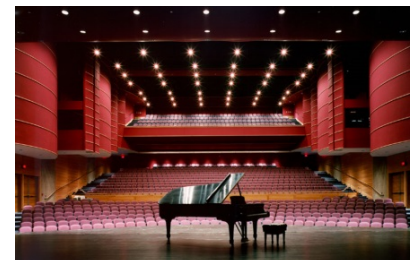
Complimentary assistive-listening devices are available through Ticket Services or the House Manager. Please keep the volume turned down as low as comfortably possible during the performance to respect other patrons in the performance.

Shows in **Baker Hall** have **continental style seating** – which means there is no center aisle; only aisles on the sides. The seats have more leg room with wider spaces in between rows.

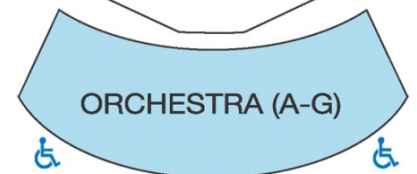
Can't make the show; already bought your tickets?

Just call or email us. We'll take care of you.

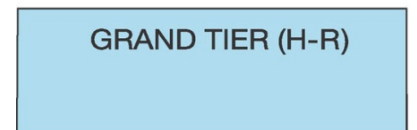
We do *not* cancel shows for weather unless a state of emergency is declared, but we will still understand if you can't make the performance. Just call or email us and we'll take care of you.



STAGE/ORCHESTRA PIT



ORCHESTRA (A-G)



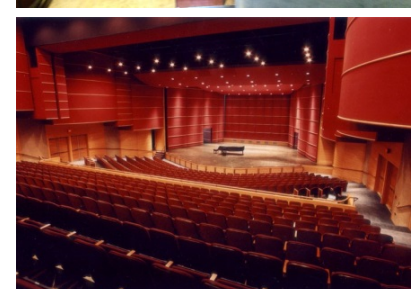
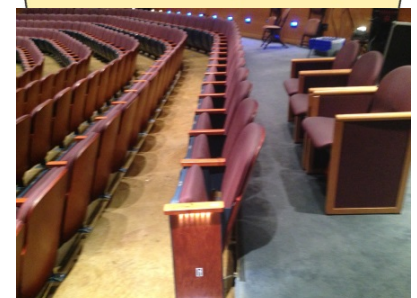
GRAND TIER (H-R)



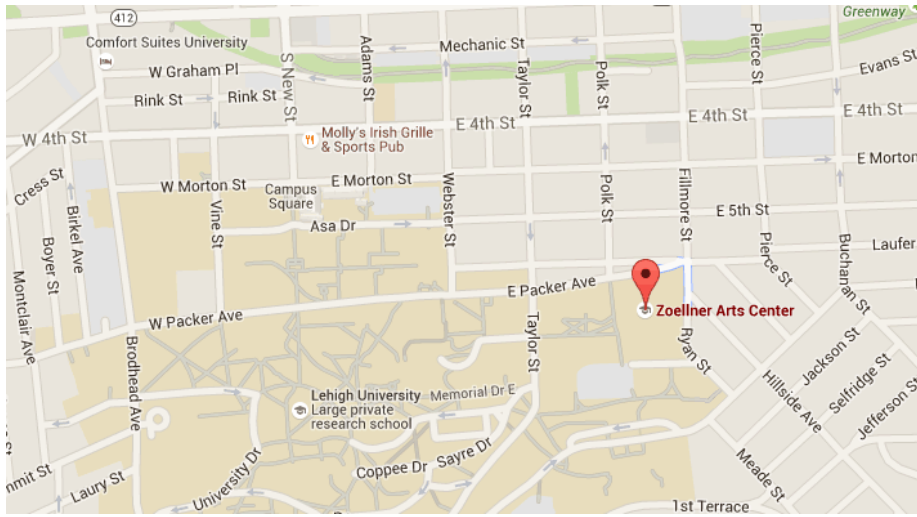
GRAND TIER (S-T)



BALCONY (AA-EE)



Map to Zoellner Arts Center



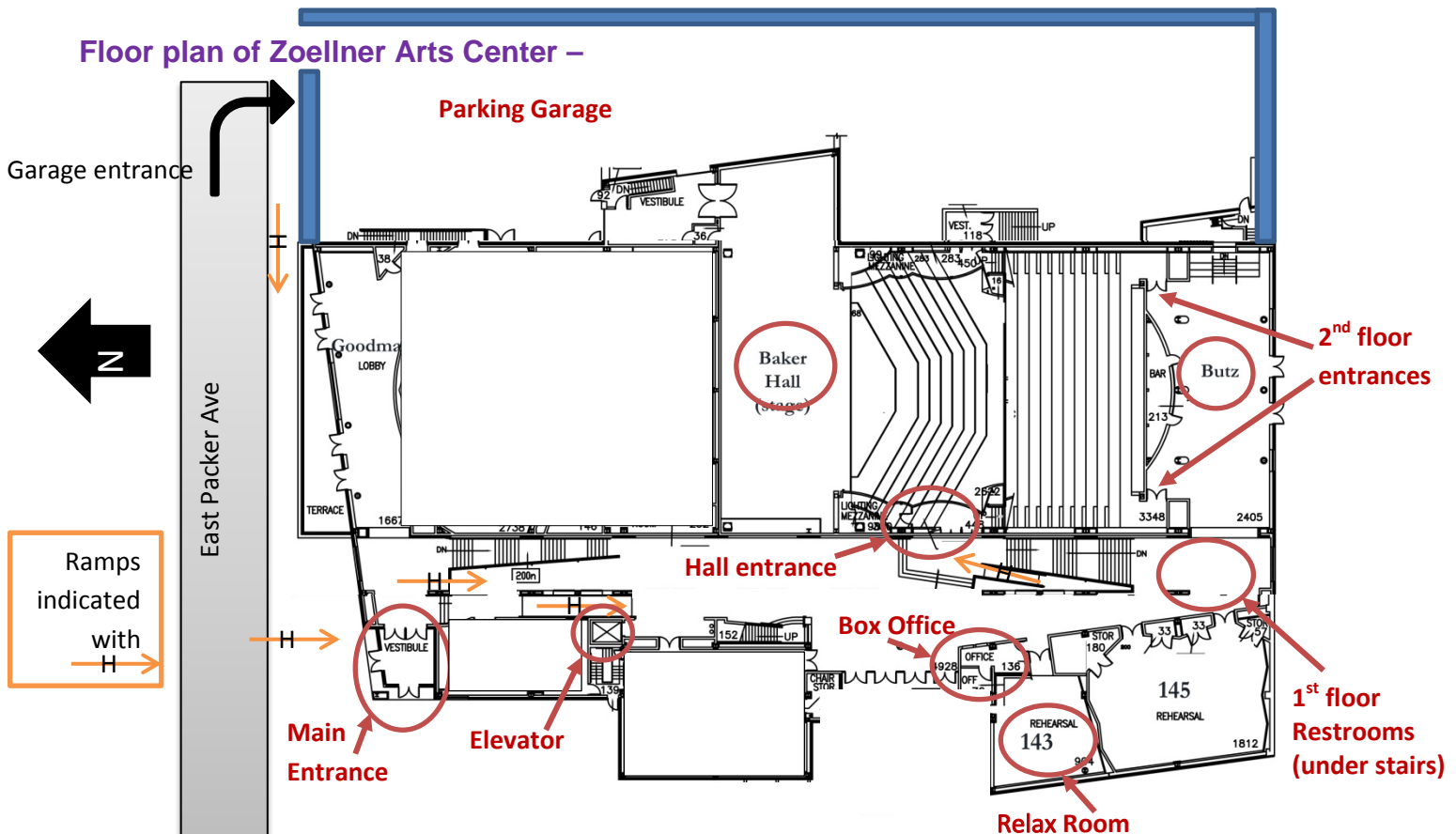
When should I arrive?

Free parking in the garage will open 90 minutes prior to the start of the show. The box office also opens about the same time. If there is a pre-show event, they usually start 60 minutes prior to the start of the show. Check the website for exact times.

What should I wear?

There are no special dress requirements for any show so please dress comfortably. The arts center can be a little cool for many so layers are suggested. There is a free coat room service.

Floor plan of Zoellner Arts Center –

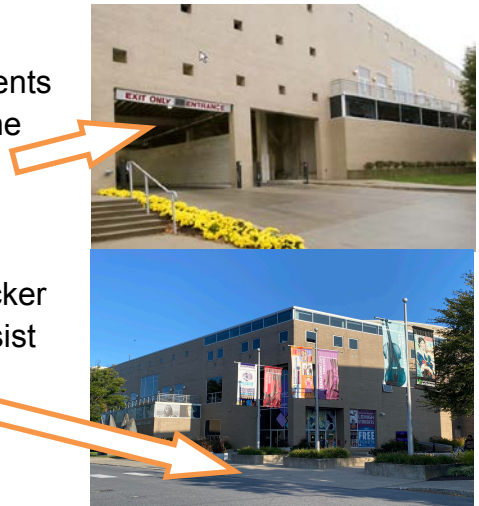


The following pages have a step-by-step walk through.

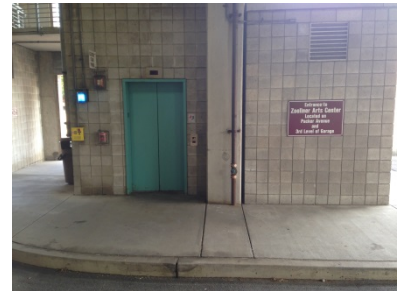
STEP 1 – PARKING

FREE convenient and safe parking is available for Zoellner events in the parking garage adjacent to the center. The entrance into the parking garage is located on Packer Avenue.

You may also **drop off your guests** at the entrance on East Packer Ave. There are specially trained ushers who will be happy to assist patrons with special needs.



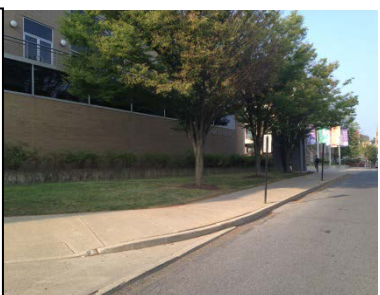
Accessible parking spaces are located on the 1st and 3rd levels of the parking garage, and there is an elevator towards the Packer Avenue side of the garage.



There are three accessible entrances to Zoellner Arts Center: The front entrance (on Packer Ave), the 3rd floor entrance (from the parking garage), and the campus entrance (ground floor, facing the Courtyard).

STEP 2: ENTERING FROM THE FIRST FLOOR – if you enter from the 3rd floor go to pg 6

a. Come out of the garage and up the side walk on East Packer.



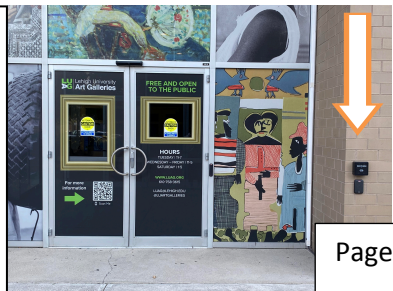
b. Front entrance



c. Front entrance



d. There are also automatic doors on the right side of this entrance.



e. Once you enter you will see the entrance to the art galleries. Go to www.luag.org for more information about exhibits and hours.



STEP 3: GETTING TO BAKER HALL

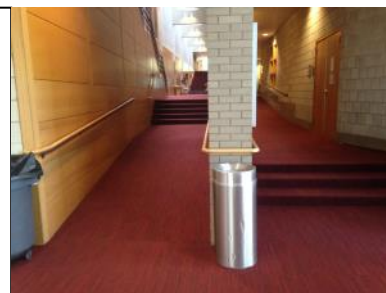
f. Turn right and you will enter up the atrium lobby.

The lobby is fully accessible with ramps throughout the building.

At the end of the lobby you will find

- the box office
- entrance to the Baker Hall and other theaters
- elevator and stairs and access to third floor parking
- rest rooms with baby changing stations
- relax room
- coat room
- drinking fountains

There are TVs in the lobby should you need to leave Baker Hall temporarily.



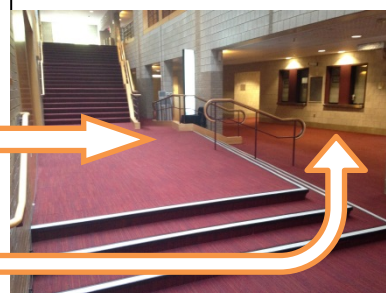
g. The entrance to Baker Hall is on the left. If you already have your tickets you can go in when the house is open; about 30 minutes prior to show-time.

The restrooms are at the end of the hall to the left.

Ask any of our helpful house staff for assistance.

Notice the ramp here. You can get to it by going around to the other side.

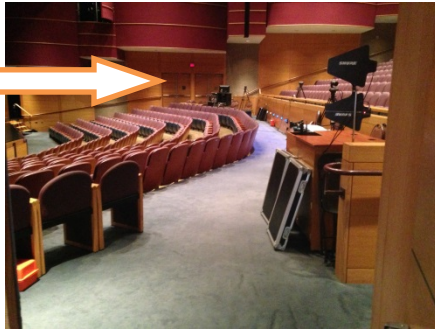
The box office is here and is open 90 minutes before show-time.



STEP 4: INSIDE BAKER HALL – Baker Hall is our largest theater with over 1000 seats. Entry will be either from the first floor or the second floor. You can use the elevator to get to the second floor if necessary.

You can exit to stairs to the parking garage here.

The cross over aisle will be free of equipment.



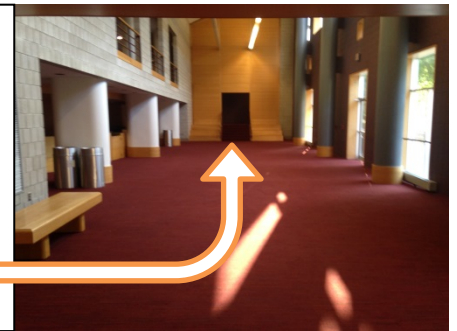
A view of Baker Hall from house right.



The second floor entrance is through our Butz Lobby at the top of the stairs or by the elevator.

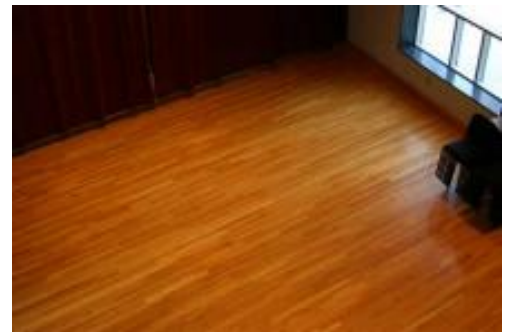
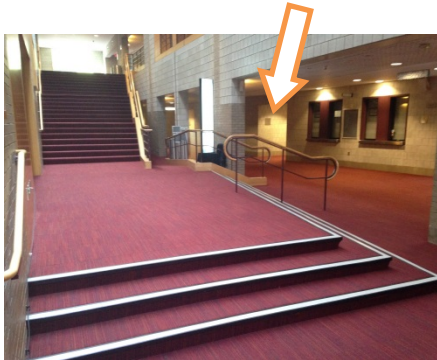


The Butz Lobby. Entrance to Baker Hall is on the left. There is stair access to the garage here.



NEED A BREAK? – if you need to temporarily leave the hall or the performance to take a break there are TVs in the atrium lobby where you can continue to watch the show.

For select events, we provide a relax room that will be set up with coloring and other activities. The room is in 143 – (here) – on the first floor, to the left of the box office.



STEP 2 (ALT) – ENTERING FROM THE 3rd FLOOR

There are accessible entrances to Zoellner Arts Center from the garage on the third floor. You can use the garage elevator or the elevator inside the arts center to get to the first floor.



The third floor entrance has stair access on the left of the photo with ramp access here.



Garage elevator is on the right.

The third floor garage landing will take you to two entry doors on the left.



When you enter, there are family and gender inclusive restrooms with baby changing stations.

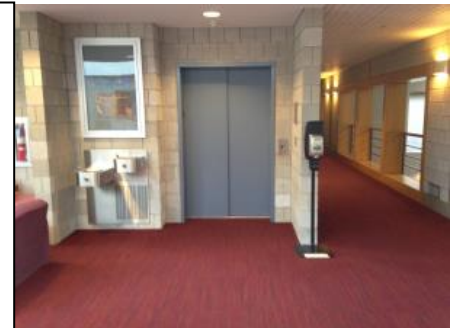
Go to the end of the hallway. The elevator is on the right.



Take the elevator to the first floor. Turn right and you will enter up the atrium lobby. **GO TO PAGE 4 to STEP 3: GETTING TO BAKER HALL.**

On the first floor you will find:

- the box office
- entrance to the Baker Hall and other theaters
- elevator and stairs and access to third floor parking
- rest rooms
- relax room

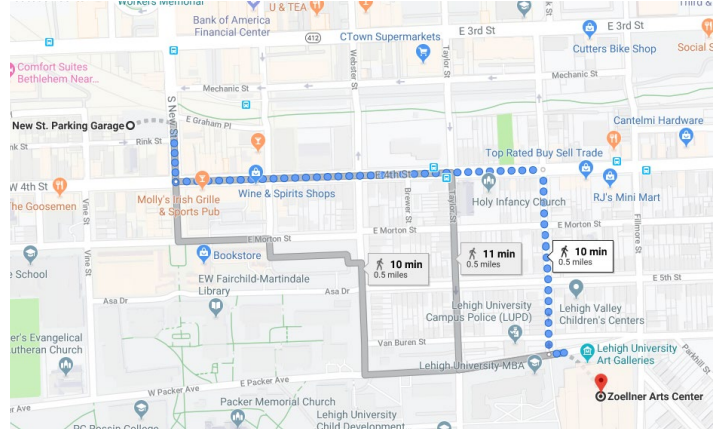


PARKING OPTIONS IF THE GARAGE IS FULL

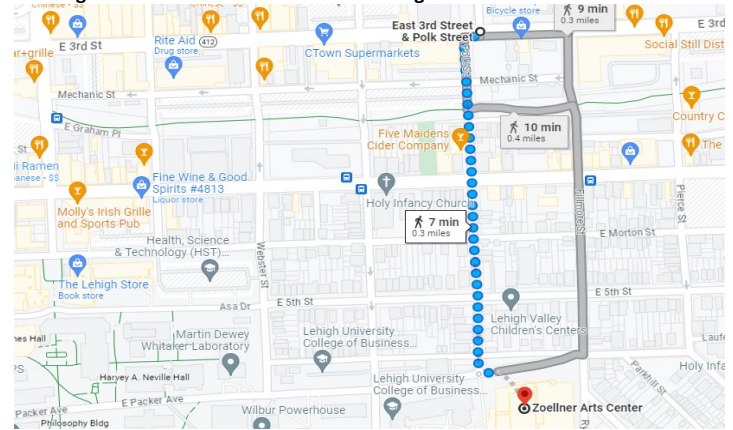
Car Parking Instructions:

1. Zoellner Arts Center Garage
Limited meter parking available on level one. Rate \$1.00 per hour.
420 E. Packer Ave, Bethlehem, PA 18015
[Passport Mobile app](#) or at a kiosk near the garage elevator on the first level.
2. Meter Parking on Packer Avenue. Cost is \$1.50 per hour.
[ParkMobile App](#)
3. New Street Parking Garage.
Rate \$1 per hour.
324 S. New Street, Bethlehem, PA 18015
Cashless facility, Credit Card and Scan to Pay
4. 3rd St & Polk St Parking Garage.
Rate \$1 per hour
Cashless facility, Credit Card and Scan to Pay

Walking Direction from New Street Garage to Zoellner Art Center.



Walking Direction from 3rd St. & Polk St. Garage to Zoellner Art Center.



Bus and Van Parking Instructions:

- Bus and van drop-off and pick-up is located directly in front of Zoellner Arts Center on E. Packer Ave. Buses/vans should pull up with Zoellner on the right-hand side (red line on image below).
- Passengers unload at the sidewalk, and enter the building as directed. Please note that buses and vans CANNOT park on the street, they should depart once the bus is unloaded and return 10 minutes prior to the scheduled end of the performance.