

# ZOELLNER ARTS CENTER

LEHIGH UNIVERSITY

2023 **2024**

PLAYBILL





Photo By John Kish IV

## DEAR FRIENDS,

This season, I am thinking about our future makers and ways to make art together. The stories on our stages, both inside and beyond the building, offer an opportunity to hear new voices and diverse perspectives from world-class artists and talented Lehigh students.

Sphinx Virtuosi opens the Presenting Series with an exciting program highlighting the excellence of Black and Latinx performers and

composers. The San Diego Symphony graces our stage to premiere a new work by Carlos Simon, the Kennedy Center's composer-in-residence, the night before they debut it in Carnegie Hall.

The imaginative Momix celebrates its 40th anniversary with a fantastical version of *Alice in Wonderland*. The Vienna Boys Choir rings in the holidays with traditional songs in Packer Memorial Church. Mermaid Theater's *The Rainbow Fish* is a delight for audiences of all ages. Lehigh Music Department Chair Paul Salerni conducts a live orchestra for Nimbus Dance's contemporary interpretation of Copland's *Appalachian Spring*.

The university's music and theatre departments continue to amplify students' talents with the artistic vision of our esteemed faculty. See the future makers share their creativity this season.

We understand the importance of building our future audiences. Our Family Series partnership with the Lehigh Valley Reilly Children's Hospital ensures engagement continues with our second annual fun-filled Family Day.

Strike Anywhere Performance Ensemble joins us for a year-long residency, building dialogue and collaboration in the community beyond our building. The ensemble activates spaces with art by listening to individuals and turning their stories into a devised play that will be seen throughout Bethlehem's South Side neighborhood, weaving the campus and community together with a beautiful performance.

How excited I am that Zoellner Arts Center's 2023-2024 season adds to the vibrant arts scene in the Lehigh Valley and is a conduit to bring the area's rural, suburban and urban communities together. Thank you for your continued support. Arts have an impact in our community because of you.

*Mark Fitzgerald Wilson*

Executive Director

# THANK YOU

Leadership Funding:  
**Victoria E. and Robert E. Zoellner '54 '15GP**

## PROGRAM SUPPORT

CLAIRE AND TED  
DIAMOND '37 '85H

MARC A.  
FALATO '87

W. BEALL  
FOWLER '59



THE LONG FAMILY  
ENDOWMENT FOR  
COMMUNITY OUTREACH  
IN THE ARTS

BRENDA & JOHN  
MCGLADE '76 '81G

POHANKA FAMILY  
FOUNDATION



THE PRESSER FOUNDATION

## MEDIA PARTNERS



## ADDITIONAL SUPPORT

Curtain Warmers: **The Arnan and Marlene Finkelstein Endowment Fund**

School Shows: **Richard H. Johnson '73G**

Music Initiatives: Supported in part by the

**Klees Family Instrumental Ensemble Endowed Fund**

Creative Campus Initiative: Supported in part by the

**Anne R. Kline '81 Endowed Fund for Creatively Integrated Programming**

Notations: **Lehigh University Creative Writing Program**

and **Zoellner Arts Center**

## SPECIAL ACKNOWLEDGMENTS



Zoellner Arts Center receives state arts funding support through a grant from the Pennsylvania Council on the Arts, a state agency funded by the Commonwealth of Pennsylvania.



THE COMMUNITY'S ONLY CHILDREN'S HOSPITAL

*Celebrating 10 years!*

From minor sniffles to specialty care,  
we've been your partner in pediatric  
health for over a decade.



**Lehigh Valley**  
**Reilly Children's Hospital**

Your health deserves a partner.



# TILLER

PRIVATE WEALTH

## ADVISORS *to* ACHIEVERS

Tiller Private Wealth is an independent wealth management firm, trusted by successful individuals, families, and business owners to enrich and enhance their financial achievements.

### DELIVERING A UNIQUELY PERSONAL AND INTEGRATED EXPERIENCE

We are the go-to firm for all things financial – keeping clients on track and giving them the sense of calm and comfort to focus on their true interests.

**TILLER PRIVATE WEALTH** (formerly Youngs Advisory Group)  
Offices in Lehigh Valley, Pennsylvania & Orlando, Florida  
610-954-9940 | [www.TillerPW.com](http://www.TillerPW.com)

An Independent  
Registered Investment  
Advisory Firm

ENTHUSIASTIC SUPPORTERS OF THE ZOELLNER ARTS CENTER





**Comfort™  
SUITES**

by CHOICE HOTELS

Behind every  
great day is a  
great night.



At Comfort Suites® we work hard to help you feel refreshed, so you can be ready to take on your day.

- Wake up refreshed thanks to premium bedding with soft and firm pillows.
- Fuel your day with hearty and healthy breakfast choices.
- Stay connected with fast & free Wi-Fi.

**Comfort Suites Bethlehem Near  
Lehigh University and LVI Airport**

120 W. Third St.  
Bethlehem, PA 18015  
610.882.9700

Book your room  
with us today at  
**ComfortSuites.com**



# THE POWER TO MAKE A DIFFERENCE

PPL people have a personal commitment to excellence in all that we do, whether it's keeping the lights on, coaching a youth sports team or volunteering at a local school. We're proud of the positive difference we make in people's lives.

PPLWEB.COM

# WDIY 88.1

LEHIGH VALLEY PUBLIC RADIO **n p r**

Listen to WDIY on your phone with our new app



Enjoy live broadcasts and browse our digital archive wherever you go

NPR News  
Public Affairs  
A Diverse Mix of Music





# Lights, Camera, *Engage*

**WITNESS THE POWER  
OF VIDEO MARKETING**  
with expertly crafted  
productions. Boost  
engagement and leave  
a lasting impression on  
your audience.

[www.asrmediaproductions.com](http://www.asrmediaproductions.com)



# Patti's Petals INC.

PRETTY GOOD FLORISTS

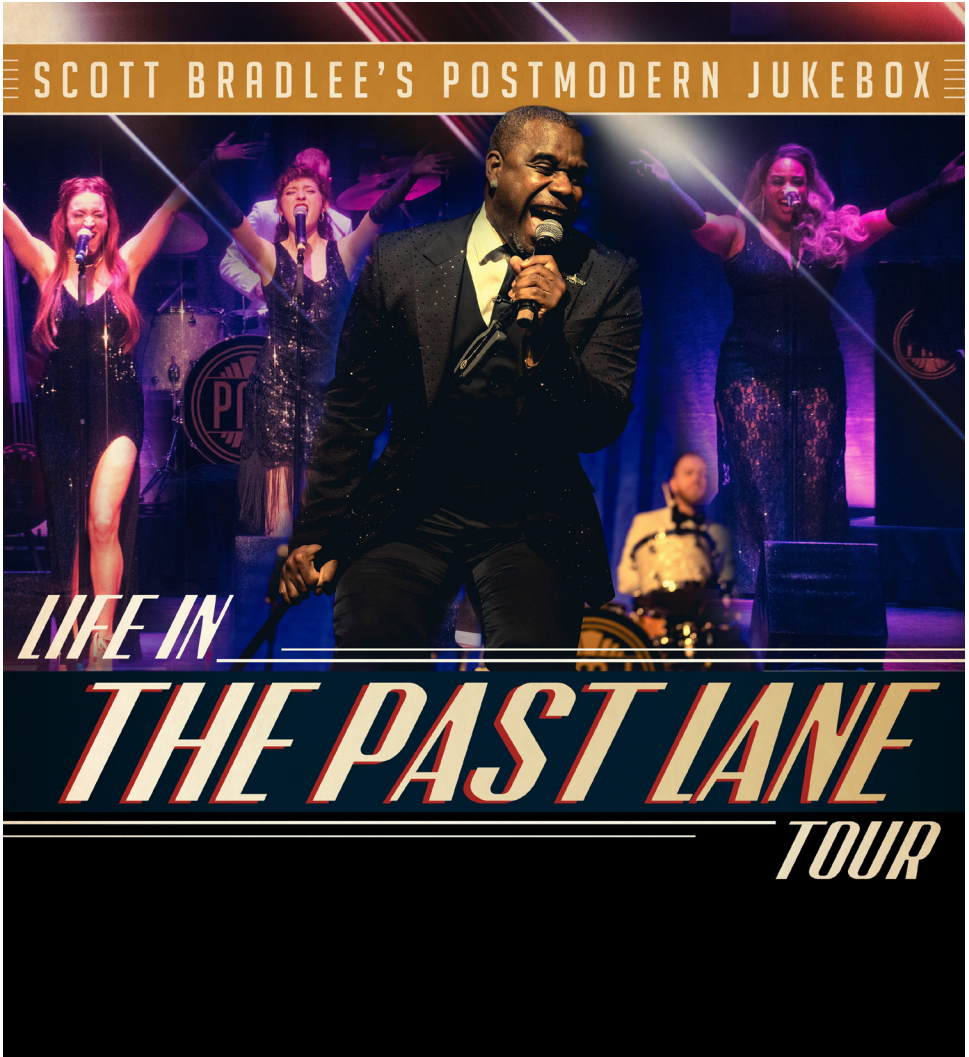
Thanks for supporting Bethlehem's local florist.  
Providing quality flowers at fair prices and with  
superior service for 36 years!



South Side Bethlehem • 215 East Third St. • Bethlehem, PA 18015  
610.867.8699 • 800.237.4718 • [www.pattispetalsflowers.com](http://www.pattispetalsflowers.com)

DEC 9

Sat  
7:30pm | Baker Hall



**ZOELLNER  
ARTS CENTER**  
LEHIGH UNIVERSITY



2023.2024  
SEASON

Zoellner Arts Center receives state arts funding support through a grant from the Pennsylvania Council on the Arts, a state agency funded by the Commonwealth of Pennsylvania.



## — ABOUT —

When New York City pianist Scott Bradlee created Postmodern Jukebox out of a basement in Queens in 2011, his goal was simple: to remake the pop hits of today into the classic sounds of the legends of yesterday. Miley Cyrus became The Platters. Bruno Mars became Frank Sinatra. The Spice Girls became The Andrews Sisters. Guns 'n' Roses became Bessie Smith.

Now, over a decade later, Postmodern Jukebox has grown to become a pop culture mainstay in its own right, having played over a thousand shows on six continents worldwide — including acclaimed venues like Radio City Music Hall, Sydney Opera House, and Red Rocks Amphitheater. In the process, PMJ has introduced audiences to many of the world's greatest singers, dancers, and instrumentalists — many of whom have become stars in their own right.

One part celebration of vintage music and culture, one part “‘Saturday Night Live’ for singers,” a Postmodern Jukebox show is an unforgettable trip back in time that makes Pop Music History — in your own hometown.

Even in our futuristic age of AI chatbots and virtual realities, there is still nothing in the world that compares with the thrill of hearing classic genres of music, performed live by a group of exceptional singers and musicians that have truly mastered the ability to move an audience.

That's the philosophy behind Scott Bradlee's Postmodern Jukebox. The revamped Life in the Past Lane show blends modern-day earworms and iconic pop hits with the original styles that put American popular music on the map: Ragtime, Swing, Big Band, Country / Western, Doo Wop and Soul. Equal parts time-traveling musical variety show and career-launching talent platform, Postmodern Jukebox will feature a cast of performers from their wildly popular YouTube channel, to bring the musical universe to life.

Everything New is Old Again - leave the AI at home and take a road trip to experience Life in the Past Lane!

FRIENDS OF  
**ZOELLNER**  
**ARTS CENTER**  
 LEHIGH UNIVERSITY



The Board of Trustees of Lehigh University gratefully acknowledges and recognizes the following alumni, friends, corporations and foundations for their generosity in supporting the annual campaign for the Friends of Zoellner Arts Center:

**Leadership Funding:**  
**Victoria E. and Robert E. Zoellner '54 '15GP**

**Overture \$25,000 - \$49,999**

Claire and Ted Diamond '37 '85H  
 Lehigh Valley Health Network  
 The Presser Foundation

**Bravo \$20,000 - \$24,999**

The Long Family Endowment for  
 Community Outreach in the Arts  
 Pohanka Family Foundation  
 Viamedia\*

**Spotlight \$15,000 - \$19,999**

Air Products  
 Lehigh Valley Community Foundation  
 Pennsylvania Council on the Arts

**Marquee \$10,000 - \$14,999**

Astound Powered by RCN\*  
 Marc Falato '87  
 Andrea and Oldrich Foucek III '72 '05P '09P  
 Anne R. Kline '81  
 Brenda and John McGlade '76 '81G  
 Mid Atlantic Arts Foundation  
 PPL Electric Utilities

**Producer \$5,000 - \$7,499**

Marlene and Arnan Finkelstein '58  
 W. Beall Fowler '59 '84P '89P '01P '16GP 'F/S  
 Richard H. Johnson '73G  
 Just Born  
 National Endowment for the Arts  
 Pennsylvania Historical and Museum Commission  
 Enid M. and Michael J. Seiden '63 '64

**Maestro \$2,500 - \$4,999**

Mary and Robert D. Culver, Jr. '66 '95P  
 Diane and Robert C. Gerlach '70  
 Dr. Julia E. Klees '82  
 PA Humanities  
 WDIY\*

**Artist \$1,000 - \$2,499**

Steven and Rosalie Aaronson  
 Janet L. and Byron D. Cook '74  
 John L. Daniel '60 '61G '89P '19GP  
 Nora A. and Mohamed S. El-Aasser 'F/S  
 Marsha and Tom Hersh '72 '77G  
 Barbara Moll '86P '21GP  
 Sally and Ray Reusser '67G  
 Wendy L. '83 '84G '08G and  
 David Thomson '83 '84G '13P '18P

**Fellow \$500 - \$999**

Jan Brody  
 Beverly and Thomas Eighthy '23GP  
 Lynne B. and Leon M. Harbold '59 '21GP  
 Michele A. McGrath '96G  
 Deborah Sacarakis 'F/S  
 Larry A. Wehr '70 '70G

**Patron \$250 - \$499**

Roy and Judith Haase  
 Ann C. '91G & Vincent G. Munley '74 '02P '04P '05P 'F/S  
 Melody K. '81G and Richard N. Weisman '00P 'F/S

**Friend \$100 - \$249**

Janet L. '76 and Joel C. Bacon '75 '76G  
 Pearl Anderson '96G and Paul Bashus '91G  
 Joan and Bill Easterly  
 Edward P. Foster '81G  
 Emilie C. Heesen '81G  
 Marie E. Helmold '81  
 James and Linda Henry  
 Glen and Karen Hill  
 Roy M. Lehr '73G  
 Christina Lewis  
 Daniel Lopresti 'F/S and Debbie Wesselmann  
 John P. Lynch '85  
 David A. Martin '80G  
 D. John McAusland '88 '26P  
 Catherine and Ronald D. Mordosky  
 Tracey L. Steele '27P and Mark A. Patten '90 '27P  
 Marybeth and Thomas Pavio  
 Deborah Prince  
 Barbara and Michael Reiniger  
 Mary Jean A. Russo '88G '93G 'F/S  
 Dr. Dianne Schellenberg, PsyD  
 Martin Q. Selzer '83  
 Ayuko and Steven J. Siegel '16P  
 Glenn and Mary Simmons  
 John and Shirley Stemler  
 William E. Toth  
 Jill B. and David A. Yannarell '83 '93G  
 John and Sandy Zengel

**Supporter < \$99**

Mandi D. Alford 'F/S  
 Stephen J. Bennison  
 Amy R. Heard and John W. Davison '25P  
 Linda Dicker '77G  
 Maryann S. Gross '15G  
 Mary D. Hanisch  
 John E. Idenden, Jr. '69 '70  
 K. Michelle Kostem '68G  
 Stephanie Moffett  
 Loretta Nemchik  
 Mr. and Mrs. Nicholas Noel, III '74  
 Bethanne G. '87 and Patrick B. Nolan '87  
 Debra A. Ott  
 Todd Patterson 'F/S  
 Kristin C. Perry '93  
 Ruth H. '79 and John Plucinski '11P  
 Catherine Y. Preysner '16  
 Jamie A. Principe '92 '25P  
 A. Mark Rentschler  
 Anthony J. Rotondo '91G  
 Rex R. Schultz '91  
 Gary W. Simmons 'F/S  
 Mary Ellen Werkheiser  
 Tracy and Liam A. Wilkinson '17P  
 Mr. and Mrs. Andrew Winter

**Zoellner Advisory Council**

Oldrich Foucek III	Anne R. Kline '81
'72 '05P '09P, chair	Michele McGrath
Marc Falato '87	Maddie Scheler '08
Valerie Johnson	LuAnn Silberg

\*Trade partner





Fall 2023 Season

INTIMATE  
APPAREL

EMERGING  
CHOREOGRAPHERS  
CONCERT

72-HOUR  
FILM  
CHALLENGE

RODGERS AND HAMMERSTEIN'S  
CINDERELLA

Tickets and Information  
610.282.3192 • [desales.edu/act1](https://desales.edu/act1)

Follow us @DeSalesUPerformingArts    



DISCOVER THE  
2024 SEASON



EXPERIENCE  
8 UNIQUE  
PRODUCTIONS

BOOK YOUR TICKETS!

PENNSYLVANIA  
SHAKESPEARE  
FESTIVAL

The Professional Theatre at DeSales University

[pashakespeare.org](https://pashakespeare.org) | 610.282.WILL [9455]

# Ultra-Fast Ultra-Reliable Internet

STARTING AT

**\$25** /mo.  
for 12 mos\*

\*Price includes autopay & e-bill discount.



**1.800.4.ASTOUND**  
**astound.com**

\*Restrictions apply. See website for details

CREATE INCOME FOR TODAY...  
LEAVE A LEGACY FOR THE ARTS



*You can count on  
guaranteed life income from  
a Lehigh University charitable gift annuity.*

#### WHY A LIFE INCOME GIFT?

**FIXED INCOME**—Your charitable gift annuity will provide dependable income to you and/or your loved ones.

**TAX SAVINGS**—You qualify for an income tax deduction the year that you make the gift. If you gift securities, you can save on capital gains taxes.

**LEGACY**—Your gift will enrich the cultural vitality of the Lehigh Valley, and provide remarkable opportunities for generations of talented students and audiences of all ages.

For information or a personalized calculation, please contact  
Lorraine Wiedorn | 610-758-4874 | lms1@lehigh.edu

**Please visit our website at:  
[www.plannedgiving.lehigh.edu](http://www.plannedgiving.lehigh.edu)**

71st Season

**CHAMBER  
MUSIC** LEHIGH  
VALLEY

**Program information  
and ticket sales  
at [www.cmlv.org](http://www.cmlv.org)**

Formerly Chamber Music Society of Bethlehem

#### 2023-2024 SEASON

**Frisson Wind Nonet**  
Friday, October 13, 2023  
at 7:30 p.m.

**Viano String Quartet with  
Rodolfo Leonet, Piano**  
Friday November 10, 2023  
at 7:30 p.m.

**Schumann Quartet**  
Friday, March 1, 2024 at 7:30 p.m.

**Apollo Piano Trio with  
Misha Amory, violist**  
Sunday, April 21, 2024 at 3:00 p.m.

**Tapestry Vocal Ensemble**  
Sunday, May 19, 2024 at 3:00 p.m.

Admission: \$35 at the door  
Concertgoers 25 and younger  
enjoy complimentary admission.

*All concerts are scheduled to be performed in the Foy Concert Hall on the Priscilla Payne Hurd Campus of Moravian University, EXCEPT for the April 21, 2024 concert which will be presented at Faith United Church of Christ, Center Valley.*

**HOLD YOUR SPECIAL  
OCCASION AT  
ZOELLNER!**

Perfect for receptions, recitals,  
parties, ceremonies and more!

CONTACT OUR RENTAL MANAGER:  
**610-758-5654 or [zoellnerartscenter.org](http://zoellnerartscenter.org)**





2023-24 SEASON

The 2023–24 season will be one to remember, and we invite you to join us as we conclude our 125th Anniversary Celebration this season!

- **GALA: Concert & World Premiere CD Recording** – Sat., November 4 at 3pm ■ Packer Memorial Church Newly completed scholarly edition of **Mendelssohn’s reconstruction of Bach’s Saint Matthew Passion**
- **Christmas in Allentown + Bethlehem** ((•)) \*Livestream option Sat. & Sun., December 9 & 10\* at 4pm **Bach Magnificat + Christen ätzet diesen Tag, BWV 63 + Carols!**
- **Spring in Bethlehem – BACH INSPIRED** ■ Sun., March 17 at 4pm **Bach Ein feste Burg ist unser Gott, BWV 80 + Selections from our June European tour**
- + **116th Bethlehem Bach Festival** ■ May 10–11 & 17–18, 2024
  - Recorder-phenom **Vincent Lauzer, Festival Artist-in-Residence**
  - The immortal **Mass in B Minor** ((•)) Live-stream option May 11
- + **Our Community & Educational Programs**
  - **Bach at Noon** Free and open to the public, second Tuesdays
  - **Greg Funfgeld Family Concert: Dancing with Bach** ■ In collaboration with the Lehigh Valley Charter High School for the Arts & Muhlenberg College Dance Department ■ Sun., February 18 at 3pm
- + **2024 European Tour** ■ June 6–16 ■ **Germany & Austria**

**Complete Season Information & Ticketing:**  
 BACH.org/season ■ 610-866-4382



Proud Sponsor of  
**Zoellner Arts Center**

## **Navigating Marketing Can Be Tricky**

**Viamedia Can Help You Navigate Through the Digital Landscape**

Viamedia has the power to precisely target your desired audience using marketing solutions which utilize television cable networks, and online, through PCs, tablets, and mobile devices, placing your business in front of the right audience, with the right message, at the right time... *every time.*



**It's All About the Audience!**

  
**viamedia**

A partner with:

**SERVICE ELECTRIC**  
CABLE TV & COMMUNICATIONS



**Blue Ridge**

**SERVICE ELECTRIC**  
EST. 1948 CABLEVISION

610.625.3200 | [viamediatv.com](http://viamediatv.com)



# INFORMATION

## CAN'T MAKE IT? EXCHANGE OR DONATE YOUR TICKETS.

Contact us before the show to either **exchange** for another event, or convert the value of your tickets to a charitable contribution to Zoellner Arts Center. Subscribers and Friends may exchange for free, just \$1 per ticket for all others. Patrons are responsible for any difference in ticket price, exchanges must occur within event category (e.g., Music Dept. ticket for Music Dept. ticket). Excludes rental events. No refunds.

**PARKING IS FREE** in the garage attached to the center for all Presenting Series, Lehigh University Music Dept. and Dept. of Theatre events (excluding some weekday morning events and Christmas Vespers in Packer Chapel). Please note, there may be a parking charge for rental events.

**GROUPS SAVE UP TO 15%** Just buy 10 or more tickets to a performance. Orders incur a one-time per-performance fee of \$6 per group order in lieu of per-ticket fees.

## TAXES AND FEES


Single tickets ordered by phone or online carry fees ranging from \$2.25-\$8.50 per ticket. Tickets purchased in-person may carry fees of up to 50 cents per ticket. The City of Bethlehem Amusement tax is 5% on tickets above \$10, with a cap of \$2 per ticket. Additional delivery charges may apply, check online for details.


# OUR GIFT CERTIFICATES NEVER EXPIRE.

Purchase these at Ticket Services or online  
in any amount and give  
the gift of entertainment.

Certificates cannot be redeemed for rental events.

## CONNECT WITH US!

 ZoellnerArts

 zoellnerartscenter

 zoellnerarts

 inzactix@lehigh.edu

 ZoellnerArts



GO TO WEBSITE

[zoellnerartscenter.org](http://zoellnerartscenter.org)

[#artshaveimpact](https://twitter.com/artshaveimpact)

# HOUSE NOTES

**Concessions:** At this time, food and beverage service will likely be limited or eliminated for the time being. Please visit the Covid-19 safety information page on our website for updates and check the “Know Before You Go” email sent to ticket holders the week of the show. Be sure to give Ticket Services your email.

**Please silence all mobile devices upon entering the theatre.**

**To leave theatres during performances,** use the rear doors, if you are able, to minimize disruption of performance.

**Late seating occurs at suitable intervals.** While waiting, you may watch performance on lobby monitors.

**Lost & Found:** Contact Ticket Services. Not responsible for lost or stolen items.

## **Families with Children:**

We welcome children of all ages to our Family Series shows. For performances not listed as Family Series in our brochure, we recommend that attendees be ages four and over. Everyone entering the theatre must have a ticket, and sit quietly in a seat throughout the performance. There are closed-circuit monitors in the lobby which supervised children may use to watch performances if they need a break.

**Accessible seating** can be requested when purchasing tickets. Accessible parking is on levels 1 and 3 in the parking garage.

**Free assistive-listening devices** are available through Ticket Services for amplified performances.

## Questions about your tickets?

**Contact Ticket Services:**  
Phone: 610-758-2787 ext. 0  
Email: [inzactix@lehigh.edu](mailto:inzactix@lehigh.edu)

**Box Office Hours:**  
TUE 12-6; WED-FRI 12-5  
For ticketed events: SAT 2 hours prior to curtain, 90 mins. all other days.

All programs and artists are subject to change. In the event of a cancellation or material change, we will make every effort to contact all ticket holders. We must reserve the right to make any changes whatsoever in the event owing to any unforeseen or unavoidable cause or to cancel the event for any reason beyond our control without being liable to pay any ticket holder compensation for damages other than a ticket of comparable value to an event (based on availability).

Video recording or photography may occur for this performance that might include images of audience members. Your attendance at today's performance grants permission for further usage of such images.

# ZOELLNER ARTS CENTER

## 2024 SPRING SEASON AT A GLANCE



<b>ERTH'S DINOSAUR ZOO</b>		<b>FAMILY SERIES</b>	.....	<b>FEB 2</b>
<b>LEHIGH UNIVERSITY JAZZ FACULTY</b>			.....	<b>FEB 3</b>
<b>CELLOGAYAGEUM</b>			.....	<b>FEB 9</b>
<b>THE PRINCETON SINGERS</b>			.....	<b>FEB 10</b>
<b>LEHIGH UNIVERSITY PHILHARMONIC</b>			.....	<b>FEB 16, 17</b>
<b>ANTIGONICK</b>			.....	<b>FEB 23-MAR 2</b>
<b>MNOZIL BRASS</b>			.....	<b>FEB 24</b>
<b>LES BALLETS TROCKADERO DE MONTE CARLO</b>			.....	<b>FEB 29</b>
<b>THE RAINBOW FISH</b>		<b>FAMILY SERIES</b>	.....	<b>MAR 2</b>
<b>GARY BARTZ &amp; LU JAZZ REPERTORY ORCHESTRA</b>			.....	<b>MAR 2</b>
<b>EUGENE ALBULESCU</b>			.....	<b>MAR 3</b>
<b>LAS CAFETERAS</b>			.....	<b>MAR 8</b>
<b>LADYSMITH BLACK MAMBAZO</b>			.....	<b>MAR 10</b>
<b>LEHIGH UNIVERSITY CHOIR, DOLCE AND GLEE CLUB</b>			.....	<b>MAR 22, 23</b>
<b>MICHAEL JORGENSEN, VIOLIN AND STEVE BECK, PIANO</b>			.....	<b>MAR 24</b>
<b>NIMBUS DANCE</b>			.....	<b>APR 5</b>
<b>NEW YORK JAZZ REPERTORY ORCHESTRA</b>			.....	<b>APR 7</b>
<b>VIOLIN WOMAN, AFRICAN DREAMS</b>			.....	<b>APR 12</b>
<b>LEHIGH UNIVERSITY WIND ENSEMBLE</b>			.....	<b>APR 14</b>
<b>THIS EMANCIPATION THING</b>			.....	<b>APR 12-20</b>
<b>SPRING STUDENT JAZZ CONCERT</b>			.....	<b>APR 20</b>
<b>LEHIGH UNIVERSITY PHILHARMONIC</b>			.....	<b>APR 26, 27</b>
<b>LEHIGH UNIVERSITY CHORAL ARTS</b>			.....	<b>MAY 3, 4</b>
<b>ACADEMY OF VOCAL ARTS OPERA</b>			.....	<b>MAY 12</b>
<b>MAX WEINBERG'S JUKEBOX</b>			.....	<b>MAY 17</b>

**KEY:** PRESENTING SERIES | MUSIC DEPARTMENT | DEPARTMENT OF THEATRE

