

ZOELLNER ARTS CENTER

LEHIGH UNIVERSITY

2023 **2024**

PLAYBILL





Photo By John Kish IV

DEAR FRIENDS,

This season, I am thinking about our future makers and ways to make art together. The stories on our stages, both inside and beyond the building, offer an opportunity to hear new voices and diverse perspectives from world-class artists and talented Lehigh students.

Sphinx Virtuosi opens the Presenting Series with an exciting program highlighting the excellence of Black and Latinx performers and

composers. The San Diego Symphony graces our stage to premiere a new work by Carlos Simon, the Kennedy Center's composer-in-residence, the night before they debut it in Carnegie Hall.

The imaginative Momix celebrates its 40th anniversary with a fantastical version of *Alice in Wonderland*. The Vienna Boys Choir rings in the holidays with traditional songs in Packer Memorial Church. Mermaid Theater's *The Rainbow Fish* is a delight for audiences of all ages. Lehigh Music Department Chair Paul Salerni conducts a live orchestra for Nimbus Dance's contemporary interpretation of Copland's *Appalachian Spring*.

The university's music and theatre departments continue to amplify students' talents with the artistic vision of our esteemed faculty. See the future makers share their creativity this season.

We understand the importance of building our future audiences. Our Family Series partnership with the Lehigh Valley Reilly Children's Hospital ensures engagement continues with our second annual fun-filled Family Day.

Strike Anywhere Performance Ensemble joins us for a year-long residency, building dialogue and collaboration in the community beyond our building. The ensemble activates spaces with art by listening to individuals and turning their stories into a devised play that will be seen throughout Bethlehem's South Side neighborhood, weaving the campus and community together with a beautiful performance.

How excited I am that Zoellner Arts Center's 2023-2024 season adds to the vibrant arts scene in the Lehigh Valley and is a conduit to bring the area's rural, suburban and urban communities together. Thank you for your continued support. Arts have an impact in our community because of you.

Mark Fitzgerald Wilson

Executive Director

THANK YOU

Leadership Funding:
Victoria E. and Robert E. Zoellner '54 '15GP

PROGRAM SUPPORT

CLAIRE AND TED
DIAMOND '37 '85H

MARC A.
FALATO '87

W. BEALL
FOWLER '59



THE LONG FAMILY
ENDOWMENT FOR
COMMUNITY OUTREACH
IN THE ARTS



BRENDA & JOHN
MCGLADE '76 '81G

POHANKA FAMILY
FOUNDATION



THE PRESSER FOUNDATION

MEDIA PARTNERS



ADDITIONAL SUPPORT

Curtain Warmers: **The Arnan and Marlene Finkelstein Endowment Fund**

School Shows: **Richard H. Johnson '73G**

Music Initiatives: Supported in part by the

Klees Family Instrumental Ensemble Endowed Fund

Creative Campus Initiative: Supported in part by the

Anne R. Kline '81 Endowed Fund for Creatively Integrated Programming

Notations: **Lehigh University Creative Writing Program**

and **Zoellner Arts Center**

SPECIAL ACKNOWLEDGMENTS



Zoellner Arts Center receives state arts funding support through a grant from the Pennsylvania Council on the Arts, a state agency funded by the Commonwealth of Pennsylvania.



THE COMMUNITY'S ONLY CHILDREN'S HOSPITAL

Celebrating 10 years!

From minor sniffles to specialty care,
we've been your partner in pediatric
health for over a decade.



Lehigh Valley
Reilly Children's Hospital

Your health deserves a partner.



TILLER

PRIVATE WEALTH

ADVISORS *to* ACHIEVERS

Tiller Private Wealth is an independent wealth management firm, trusted by successful individuals, families, and business owners to enrich and enhance their financial achievements.

DELIVERING A UNIQUELY PERSONAL AND INTEGRATED EXPERIENCE

We are the go-to firm for all things financial – keeping clients on track and giving them the sense of calm and comfort to focus on their true interests.

TILLER PRIVATE WEALTH (formerly Youngs Advisory Group)
Offices in Lehigh Valley, Pennsylvania & Orlando, Florida
610-954-9940 | www.TillerPW.com

An Independent
Registered Investment
Advisory Firm

ENTHUSIASTIC SUPPORTERS OF THE ZOELLNER ARTS CENTER



**Comfort™
SUITES**

by CHOICE HOTELS

Behind every
great day is a
great night.



At Comfort Suites® we work hard to help you feel refreshed, so you can be ready to take on your day.

- Wake up refreshed thanks to premium bedding with soft and firm pillows.
- Fuel your day with hearty and healthy breakfast choices.
- Stay connected with fast & free Wi-Fi.

**Comfort Suites Bethlehem Near
Lehigh University and LVI Airport**

120 W. Third St.
Bethlehem, PA 18015
610.882.9700

Book your room
with us today at
ComfortSuites.com



THE POWER TO MAKE A DIFFERENCE

PPL people have a personal commitment to excellence in all that we do, whether it's keeping the lights on, coaching a youth sports team or volunteering at a local school. We're proud of the positive difference we make in people's lives.

PPLWEB.COM

WDIY 88.1

LEHIGH VALLEY PUBLIC RADIO **n p r**

Listen to WDIY on your phone with our new app



Enjoy live broadcasts and browse our digital archive wherever you go

NPR News
Public Affairs
A Diverse Mix of Music





Lights, Camera, *Engage*

**WITNESS THE POWER
OF VIDEO MARKETING**
with expertly crafted
productions. Boost
engagement and leave
a lasting impression on
your audience.

www.asrmediaproductions.com

Patti's Petals INC.

PRETTY GOOD FLORISTS

Thanks for supporting Bethlehem's local florist.
Providing quality flowers at fair prices and with
superior service for 36 years!



South Side Bethlehem • 215 East Third St. • Bethlehem, PA 18015
610.867.8699 • 800.237.4718 • www.pattispetalsflowers.com

FEB 2

Fri
7:30pm | Baker Hall



 **Lehigh Valley
Reilly Children's Hospital**
FAMILY SERIES

**ZOELLNER
ARTS CENTER**
LEHIGH UNIVERSITY



2023.2024
SEASON

Zoellner Arts Center receives state arts funding support through a grant from the Pennsylvania Council on the Arts, a state agency funded by the Commonwealth of Pennsylvania.



Red Tail Entertainment LLC

Presents



Created by
Erth-Visual & Physical, Incorporated
Sydney, Australia

Starring

BRANDON GRIMES **BIG ANDERSON**
ERYN MALAFRONTE **DON MITCHELL**

Writer & Director
SCOTT WRIGHT

Associate
Director
**SHARON
KERR**

Designer
**STEVE
HOWARTH**

Specialist
Puppet Design
**BRYONY
ANDERSON**

Composer
**PHIL
DOWNING**

National Tour Booking
BRAD SIMON ORGANIZATION

National Marketing Director
C MAJOR MARKETING

Tour Manager
JOHN RUEGSEGGER

Technical Director
JOHN RUEGSEGGER

General Manager
DAVID DENSON

CAST

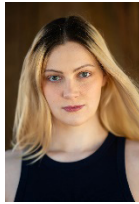
(in alphabetical order)

Puppeteer BIG ANDERSON

Puppeteer BRANDON GRIMES

Puppeteer ERYN MALAFRONTE

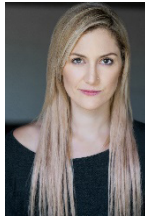
Host DON MITCHELL



Big Anderson



Brandon Grimes



Eryn Malafrente



Don Mitchell

WHO'S WHO in the CAST

BIG ANDERSON (*Host*) is a performer and filmmaker from Seattle, WA. Big has worked on dozens of films and plays and has appeared as a Live Character Actor with Princess Cruises and a Murder Mystery Host with American Immersion Theatre. Big earned her Bachelor of the Arts in Visual Narrative Design from Seattle Pacific University. There she studied storytelling through the lenses of film, theatre, visual arts, creative writing, and computer science. When she's not writing and performing, Big enjoys playing video games, watching movies and tv, knitting, and reading memoirs and science fiction. Big would like to thank her parents for their never-ending support in her pursuit of the joys of performance, and for letting her live with them for free.

BRANDON GRIMES (*Puppeteer*) is a dynamic performer from Harlem, captivating audiences with a range of roles. An AMDA graduate from 2016 to 2019, Brandon honed his skills in productions like *Spelling Bee* and *Once On This Island*, guided by mentors like David Cady and Michael Perilstein. He's not just a stage actor, he has recently found a passion for puppeteering with the renowned company Erth. With an extensive theatrical background and newfound skills in puppeteering, Brandon Grimes is a standout entertainer ready to captivate audiences of all ages.

ERYN MALAFRONTA (*Puppeteer*) Eryn Malafronte is honored/ thrilled/ all the adjectives to be working with Red tail and EARTH again, tricking kids into learning with the power of puppets. Most recently seen puppeteering as Alphabot in the PBS show "Reading Buddies" with Dusty and Dot seasons 1-3, or as Tip Toe the Reindeer in Macys Thanksgiving Day Parade, and pretty much every Erth tour that has toured the states, I'm proud to carry the tradition of scaring/ entertaining children performing non-verbal puppets. Many thanks to these amazing companies, and theaters for opening their doors to us and the families and individuals who support this show and the arts/ live theater in general, the arts needs you! Enjoy the show!

DON MITCHELL (*Puppeteer*) is an Atlanta-based performer and poet. Don enjoys moderately short walks on the beach and has a weakness for Oreo cookies. He would like to thank his family and friends for the overwhelming support as well as Red Tail Entertainment for the opportunity to work on Erth's *Dinosaur Zoo*.

SCOTT WRIGHT (*Artistic Director*) Scott is the co-founder and Artistic Director of Erth Visual & Physical Inc. For over twenty-five years Erth's puppetry based theatrical productions and innovative community projects have challenged and inspired audiences across the world, driven by a founding interest in natural history, indigenous folklore,

sociology and urban mythology. Scott has directed the majority of Erth's productions, which now tour year-round internationally, and have featured in all major Australian arts festivals, and today the company is recognized internationally as an innovator of physical and visual theatre, and a creator of brave, unbridled work for children.

SHARON KERR (*Associate Director*) Sharon is Executive Director and a founding member of Erth. Originally trained as a school teacher majoring in drama, Sharon has much performance experience. Prior to helping form Erth, she spent five years in contemporary dance theater with emphasis on improvisational movement. Puppetry became a natural extension of this. Her roles within Erth are many and varied. Contributing to creative and performance direction, Sharon continues to perform whenever she can. Sharon has also steered the company for many years as its key administrator. Some of her performance highlights include her aerial harness and flying work memorable amongst these are from atop the sails of the Sydney Opera House, the spire of St. Paul's Cathedral in Melbourne and from the 30th floor of the Nge Ann skyscraper in Singapore.

STEVE HOWARTH (*Designer*) As a founding and fulltime member of Erth Visual & Physical, Inc., Steve designs for most of the company's productions and external commissions. From the Erth Studio/Workshop he supervises a team of artists in creating the puppets, sets, props, costumes that are on constant tour around the globe. The puppets often take the form of teeth-gnashing beasts and inflatable monsters that are the foundation of *Dinosaur Zoo*. Steve also mentors design students from tertiary institutions and assists emerging makers in the implementation of their respective crafts.

BRYONY ANDERSON (*Specialist Puppet Design*) Bryony is a designer, maker, artist and wannabe scientist based in the forested hills of NSW. Her puppets and constructions for visual performance have toured nationally and internationally with many Australian circus, puppetry, visual performance and theatre companies, as well as appearing in museums, festivals and documentaries. Solo exhibitions have ranged from interactive puppetry installations and handmade projection machinery to intricate illustration, all investigating a salvaged aesthetic. She has conducted community workshops in the Central Desert, rural Victoria, Western Sydney, and across the Mid North Coast of NSW. In 2011 she began working with her local community to seed a creative industry of skilled artisans making high calibre work from frugal resources. A three-year project was spawned that drew in artists, composers, scientists and over 1200 community participants, and resulted in an intricately detailed forest installation made entirely from stuff that was headed to landfill. The Frugal Forest is now on tour. frugalforest.oneoffmakery.net.au

PHIL DOWNING (*Composer*) Phil has a distinct history working with interactive multimedia. After years spent performing music, Phil set about reinventing his means of expression through music, by creating unique and obscure musical instruments. This inspiration has led to the creation of numerous soundtracks for theatrical productions (1999–2012). Delivery of video and imagery being an obvious progression, Phil has also worked with various technologies to incorporate physical interaction (with performers and audience members) into installations and performances, utilizing technologies such as infra-red, sonar and pressure sensors, Arduino programmable circuit boards and Kinect sensors. Working with Erth, Phil has developed systems for automated delivery of sound, light and visual effects, and has designed stand-alone sound systems for their various creature puppets. “This one’s going to be a mad professor!” his grandma proclaimed upon his birth....She was possibly correct!

DAVID DENSON (*General Manager*) is an accomplished director and producer with over twenty years of experience creating live theatrical events on and off-Broadway, regionally and on tour. As Partner and Head of Productions at Red Tail Productions, David produced the world premiere of *Dolly Parton’s Smoky Mountain Christmas Carol* in Boston in 2019 as well as the European premiere at London’s Southbank Centre in 2022. Broadway credits include *The Kite Runner* and *Paradise Square*; he has produced national tours of *Double Dare Live!* with Marc Summers; Erth’s *Dinosaur Zoo Live* and *Prehistoric Aquarium Adventure*. In 2022 he launched two new, immersive, multi-media experiences: *Lazer Invazion: A Rock-n-Roll Odyssey of Lasers, Lights, and Alien Invasions* and *Lazed & Confused: The 420 Lazer Experience*. Prior to joining Red Tail, David served as the Director of Programming for the multi-venue, AT&T Performing Arts Center in Dallas, TX where he also spent two years with the City of Dallas Office of Cultural Affairs overseeing the construction and grand opening of the \$48M, 750 seat Dallas City Performance Hall in 2012.

BRAD SIMON ORGANIZATION (*Exclusive North American Booking*). Since 1983, The Brad Simon Organization has provided tour booking services for a diverse roster of artists and productions in a wide variety of performance venues, including performing art centers, commercial theaters, amphitheatres, arenas, festivals, fairs and theme parks. Their national and international tours have reached millions of audience members at over 1,000 commercial and non-profit venues in all 50 United States and eight provinces in Canada, plus Sydney, Australia, Singapore and other territories. They have toured 20+ productions based on top-rated television series, over 75 from regarded book titles, as well as original theatre productions, all targeted to multi-generational family audiences. The Brad Simon Organization’s longevity in the touring industry is a product of their work ethic and love for presenting live performance and meaningful theatrical experiences for audiences of all ages.

RED TAIL ENTERTAINMENT (*Producer*) Headquartered in Fort Worth, Texas, Red Tail Entertainment has established itself as one of the industry's Top 100 Presenters with sold out engagements of *Cinderella*, *Wizard of Oz*, *Stomp*, *The Beach Boys*, *Tony Bennett*, *Harry Connick, Jr.*, *Steve Martin & Martin Short*, *The Wild Kratts*, *Daniel Tiger's Neighborhood*, *Hip Hop Nutcracker*, *Cirque Dreams*, and many more. The company continues to expand and grow, becoming a leader in producing unique live events using international talent. In addition to *Dolly Parton's Smoky Mountain Christmas Carol*, Red Tail produced the 2018 and 2019 tours of Nickelodeon's *Double Dare Live!* with Marc Summers as well as a three-month residency at the Smithsonian National Zoo in Washington, D.C. for *Erth's Dino Zoo Live*. Red Tail has also produced the U.S. tours of *Erth's Prehistoric Aquarium Adventure*, *Scooby-Doo! Live Musical Mysteries*, as well as *A Night with Janis Joplin* on Broadway, and has co-produced *The Kite Runner* on Broadway. As audiences change and new artists emerge, Red Tail Entertainment will continue to focus on producing and presenting only the best in live entertainment.

ERTH VISUAL & PHYSICAL INC. (*Producer*). ERTH is a company fueled by beautiful accidents; a team of creators, makers and performers pushing the limits of design, content and experience. For over twenty-five years ERTH's puppetry-based theatrical productions and innovative community projects have challenged and inspired audiences across the world, driven by a special interest in natural history, indigenous folklore, sociology and urban mythology. Today the company is recognized internationally as an innovator of physical and visual theatre, and a creator of brave, unbridled work for children. ERTH's work tours year-round internationally, has featured in all major Australian arts festivals, and has appeared at international events including the Sydney Olympic Games Opening Ceremony, Hong Kong Fringe, Galway Arts Festival (IR), Stockton International Riverside Festival (UK), Singapore Arts Festival, the Festival of Arts & Ideas (USA), Shanghai World Expo, the opening of the Mall of Qatar (UAE), and the Hampyeong Butterfly Festival (South Korea). ERTH's studio and workshop custom builds specialist creations for clients that have included the Sydney Opera House, Sydney Festival, Sydney Olympic Games, Vivid Sydney, the Centenary of Federation, the Department of Communications and the Arts, Performing Lines and The Empire Strips Back, and the company has long standing creative relationships with major museums around Australia, New Zealand and the USA. In the company's ongoing push to explore boundaries and devise new work, 2017 sees the premiere of *birdfoxmonster* - a multi-sensorial dining experience and collaboration between Erth and Studio A, which will take place at Carriageworks, and the release of *Prehistoric VR* - a 360-degree virtual reality short film for children created in partnership with renowned Australian film director Samantha Lang, and based on Erth's *Prehistoric Aquarium*.

SPECIAL THANKS

This project has been assisted by the Australian Government through the Australia Council for the Arts, its art funding and advisory body.

STAFF FOR *ERTH'S DINOSAUR ZOO LIVE*

GENERAL MANAGEMENT

David Denson

NATIONAL MARKETING & PUBLICITY

C Major Entertainment Marketing, Inc.

TOUR MANAGER

John Ruegsegger

EXCLUSIVE TOUR BOOKING

The Brad Simon Organization www.bsoinc.com

Technical Director John Ruegsegger
Graphic Designer Goetz Creative
Graphic Designer Cramertivity
Website Design & Interactive Marketing Grey Ship
Photographer Christian Waits

FRIENDS OF
ZOELLNER
ARTS CENTER
LEHIGH UNIVERSITY



The Board of Trustees of Lehigh University gratefully acknowledges and recognizes the following alumni, friends, corporations and foundations for their generosity in supporting the annual campaign for the Friends of Zoellner Arts Center:

Leadership Funding:

Victoria E. and Robert E. Zoellner '54 '15GP

Overture \$25,000 - \$49,999

Claire and Ted Diamond '37 '85H
Lehigh Valley Health Network
The Presser Foundation

Bravo \$20,000 - \$24,999

The Long Family Endowment for
Community Outreach in the Arts
Anne R. Kline '81 and
Geoffrey P. Pohanka
Viamedia*

Spotlight \$15,000 - \$19,999

Air Products
Lehigh Valley Community Foundation
Pennsylvania Council on the Arts

Marquee \$10,000 - \$14,999

Astound Powered by RCN*
Marc Falato '87
Andrea and
Oldrich Foucek III '72 '05P '09P
Brenda and John McGlade '76 '81G
Mid Atlantic Arts Foundation
PPL Electric Utilities

Ovation \$7,500 - \$9,999

Richard H. Johnson '73G

Producer \$5,000 - \$7,499

Marlene and Arnan Finkelstein '58
Just Born
National Endowment for the Arts
Pennsylvania Historical
and Museum Commission
Enid M. and Michael J. Seiden '63 '64

Maestro \$2,500 - \$4,999

Mary and
Robert D. Culver, Jr. '66 '95P
Diane and Robert C. Gerlach '70
PA Humanities
Anne and Bob Teufel '59
WDIY*

Artist \$1,000 - \$2,499

Steven and Rosalie Aaronson
John E. and Charlotte M. Collier
Janet L. and Byron D. Cook '74
John L. Daniel '60 '61G '89P '19GP
Nora A. and Mohamed S. El-Aasser 'F/S
Larry Heimbech
Rebecca Dabora and
Joseph J. Helble '82 'F/S
Marsha and Tom Hersh '72 '77G
Judith and Stuart Olitchick '60 '25GP
Sally and Ray Reusser '67G
Wendy L. '83 '84G '08G and
David Thomson '83 '84G '13P '18P

Fellow \$500 - \$999

John Alexander
Jan Brody
Michelle V. and James J. Duane III '73
'04P '06P '06PG
Beverly and Thomas Eighmy '23GP
Lynne B. and
Leon M. Harbold '59 '21GP
Michele A. McGrath '96G
Deborah Sacarakis 'F/S
Roberta H. and James B. Swenson '59
'15GP '17GP 'F/S
Larry A. Wehr '70 '70G

Patron \$250 - \$499

Terri A. '77G and
James A. Bartholomew
Joan Cole '95
Roy and Judith Haase
Ann C. '91G & Vincent G. Munley '74
'02P '04P '05P 'F/S
Melody K. '81G and
Richard N. Weisman '00P 'F/S

Friend \$100 - \$249

Janet L. '76 and Joel C. Bacon '75 '76G
Pearl Anderson '96G and
Paul Bashus '91G
Michael R. Carbonetta '04

Joan and Bill Easterly
Edward P. Foster '81G
Emilie C. Heesen '81G
Marie E. Helmold '81
James and Linda Henry
Glen and Karen Hill
Daniel J. Honoshowsky '96
Roy M. Lehr '73G
Christina Lewis
Daniel Lopresti 'F/S and
Debbie Wesselmann
John P. Lynch '85
David A. Martin '80G
D. John McAusland '88 '26P
Lynda J. and Mark A. Miller '81 '13P
Catherine and Ronald D. Mordosky
William H. Oldach III '84
Tracey L. Steele '27P and
Mark A. Patten '90 '27P
Marybeth and Thomas Pavlo
Deborah Prince
Barbara and Michael Reiniger
Mary Jean A. Russo '88G '93G 'F/S
Dr. Dianne Schellenberg, PsyD
Martin Q. Selzer '83
Maryann R. Shegelski '98
Ayuko and Steven J. Siegel '16P
Glenn and Mary Simmons
John and Shirley Stemler
William E. Toth
Jill B. and David A. Yannarell '83 '93G
John and Sandy Zengel

Supporter < \$99

Fred and Mandi D. Alford 'F/S
Mark Andrews
Jayson and Nurit Baron
Bryan Bennett
Stephen J. Bennison
Heather A. '07 and
Nathan A. Bohler '07
Elizabeth P. Butler
Kara Coleman
Cynthia Cressman
Amy R. Heard and
John W. Davison '25P
Connie Deckman
Linda Dicker '77G
Michael Edmonds
Coleen Finelli
Barrett E. Frankel '02 '03
Martha Franklin

Maryann S. Gross '15G
Mary D. Hanisch
Martha Hatchett
Amy R. Heard '25P
John E. Idenden, Jr. '69 '70
Linda Johnson
Matthew L. Kearns '78
Denise Kennedy
Shirley Khabbas
K. Michelle Kostem '68G
Ricky LaDuca
David M. and Kathryn Leber
Jennifer Liu
Dennis Livrone
Adam M. Lupinacci '06
Alphonse and Martha Maffeo Margaret
McNamara
Kristen Mesa
Edwena Miller
Stephanie Moffett
Lori A. Murphy '90
Loretta Nemchik
Mr. and Mrs. Nicholas Noel, III '74
Bethanne G. '87 and Patrick B. Nolan '87
Debra A. Ott
Todd Patterson 'F/S
Kristin C. Perry '93
Ruth H. '79 and John Plucinski '11P
Catherine Y. Preysner '16
Jamie A. Principe '92 '25P
A. Mark Rentschler
George Roesser
Anthony J. Rotondo '91G
Rex R. Schultz '91
Gary W. Simmons 'F/S
Judith O. Pennington and
Steven H. Weintraub 'F/S
Mary Ellen Werkheiser
Tracy and Liam A. Wilkinson '17P
Mr. and Mrs. Andrew Winter
Christine Hughes & Daniel A. Zarrilli '97

Zoellner Advisory Council

Oldrich Foucek III '72 '05P '09P, chair
Marc Falato '87
Valerie Johnson
Anne R. Kline '81
Michele McGrath
Maddie Scheler '08
LuAnn Silberg

**Trade partner*



Spring 2024 Season

TWELFTH
NIGHT

PINOCCHIO!

DANCE
ENSEMBLE
CONCERT

DE SALES UNIVERSITY
FILM FESTIVAL

THE DROWSY
CHAPERONE

Tickets and Information: 610.282.3192 • desales.edu/act1

Follow us @DeSalesUPerformingArts    



DISCOVER THE
2024 SEASON



EXPERIENCE
8 UNIQUE
PRODUCTIONS

BOOK YOUR TICKETS!

PENNSYLVANIA
SHAKESPEARE
FESTIVAL

The Professional Theatre at DeSales University

pashakespeare.org | 610.282.WILL [9455]

Ultra-Fast Ultra-Reliable Internet

STARTING AT

\$25 /mo.
for 12 mos*

*Price includes autopay & e-bill discount.



1.800.4.ASTOUND
astound.com

*Restrictions apply. See website for details

**CREATE INCOME FOR TODAY...
LEAVE A LEGACY FOR THE ARTS**



*You can count on
guaranteed life income from
a Lehigh University charitable gift annuity.*

WHY A LIFE INCOME GIFT?

FIXED INCOME—Your charitable gift annuity will provide dependable income to you and/or your loved ones.

TAX SAVINGS—You qualify for an income tax deduction the year that you make the gift. If you gift securities, you can save on capital gains taxes.

LEGACY—Your gift will enrich the cultural vitality of the Lehigh Valley, and provide remarkable opportunities for generations of talented students and audiences of all ages.

For information or a personalized calculation, please contact
Lorraine Wiedorn | 610-758-4874 | lms1@lehigh.edu

**Please visit our website at:
www.plannedgiving.lehigh.edu**

71st Season

CHAMBER MUSIC LEHIGH VALLEY

Program information and ticket sales at www.cmlv.org

Formerly Chamber Music Society of Bethlehem

2023-2024 SEASON

Frisson Wind Nonet
Friday, October 13, 2023
at 7:30 p.m.

Viano String Quartet with Rodolfo Leonet, Piano
Friday November 10, 2023
at 7:30 p.m.

Schumann Quartet
Friday, March 1, 2024 at 7:30 p.m.

Apollo Piano Trio with Misha Amory, violist
Sunday, April 21, 2024 at 3:00 p.m.

Tapestry Vocal Ensemble
Sunday, May 19, 2024 at 3:00 p.m.

Admission: \$35 at the door
Concertgoers 25 and younger enjoy complimentary admission.

All concerts are scheduled to be performed in the Foy Concert Hall on the Priscilla Payne Hurd Campus of Moravian University, EXCEPT for the April 21, 2024 concert which will be presented at Faith United Church of Christ, Center Valley.

HOLD YOUR SPECIAL OCCASION AT ZOELLNER!

Perfect for receptions, recitals, parties, ceremonies and more!

CONTACT OUR RENTAL MANAGER:
610-758-5654 or zoellnerartscenter.org





2023-24 SEASON

The 2023–24 season will be one to remember, and we invite you to join us as we conclude our 125th Anniversary Celebration this season!

- **GALA: Concert & World Premiere CD Recording** – Sat., November 4 at 3pm ■ Packer Memorial Church Newly completed scholarly edition of **Mendelssohn’s reconstruction of Bach’s Saint Matthew Passion**
- **Christmas in Allentown + Bethlehem** ((•)) *Livestream option Sat. & Sun., December 9 & 10* at 4pm **Bach Magnificat + Christen ätzet diesen Tag, BWV 63 + Carols!**
- **Spring in Bethlehem – BACH INSPIRED** ■ Sun., March 17 at 4pm **Bach Ein feste Burg ist unser Gott, BWV 80 + Selections from our June European tour**
- + **116th Bethlehem Bach Festival** ■ May 10–11 & 17–18, 2024
 - Recorder-phenom **Vincent Lauzer, Festival Artist-in-Residence**
 - The immortal **Mass in B Minor** ((•)) Live-stream option May 11
- + **Our Community & Educational Programs**
 - **Bach at Noon** Free and open to the public, second Tuesdays
 - **Greg Funfgeld Family Concert: Dancing with Bach** ■ In collaboration with the Lehigh Valley Charter High School for the Arts & Muhlenberg College Dance Department ■ Sun., February 18 at 3pm
- + **2024 European Tour** ■ June 6–16 ■ **Germany & Austria**

Complete Season Information & Ticketing:
 BACH.org/season ■ 610-866-4382



Proud Sponsor of
Zoellner Arts Center

Navigating Marketing Can Be Tricky

Viamedia Can Help You Navigate Through the Digital Landscape

Viamedia has the power to precisely target your desired audience using marketing solutions which utilize television cable networks, and online, through PCs, tablets, and mobile devices, placing your business in front of the right audience, with the right message, at the right time... *every time.*



It's All About the Audience!


viamedia

A partner with:

SERVICE ELECTRIC
CABLE TV & COMMUNICATIONS



Blue Ridge

SERVICE ELECTRIC
EST. 1948 CABLEVISION

610.625.3200 | viamediatv.com

INFORMATION

CAN'T MAKE IT? EXCHANGE OR DONATE YOUR TICKETS.

Contact us before the show to either **exchange** for another event, or convert the value of your tickets to a charitable contribution to Zoellner Arts Center. Subscribers and Friends may exchange for free, just \$1 per ticket for all others. Patrons are responsible for any difference in ticket price, exchanges must occur within event category (e.g., Music Dept. ticket for Music Dept. ticket). Excludes rental events. No refunds.

PARKING IS FREE in the garage attached to the center for all Presenting Series, Lehigh University Music Dept. and Dept. of Theatre events (excluding some weekday morning events and Christmas Vespers in Packer Chapel). Please note, there may be a parking charge for rental events.

GROUPS SAVE UP TO 15% Just buy 10 or more tickets to a performance. Orders incur a one-time per-performance fee of \$6 per group order in lieu of per-ticket fees.

TAXES AND FEES


Single tickets ordered by phone or online carry fees ranging from \$2.25-\$8.50 per ticket. Tickets purchased in-person may carry fees of up to 50 cents per ticket. The City of Bethlehem Amusement tax is 5% on tickets above \$10, with a cap of \$2 per ticket. Additional delivery charges may apply, check online for details.


OUR GIFT CERTIFICATES NEVER EXPIRE.


Purchase these at Ticket Services or online
in any amount and give
the gift of entertainment.

Certificates cannot be redeemed for rental events.

CONNECT WITH US!

 ZoellnerArts

 zoellnerartscenter

 zoellnerarts

 inzactix@lehigh.edu

 ZoellnerArts



GO TO WEBSITE

zoellnerartscenter.org

[#artshaveimpact](https://twitter.com/artshaveimpact)

HOUSE NOTES

Concessions: At this time, food and beverage service will likely be limited or eliminated for the time being. Please visit the Covid-19 safety information page on our website for updates and check the “Know Before You Go” email sent to ticket holders the week of the show. Be sure to give Ticket Services your email.

Please silence all mobile devices upon entering the theatre.

To leave theatres during performances, use the rear doors, if you are able, to minimize disruption of performance.

Late seating occurs at suitable intervals. While waiting, you may watch performance on lobby monitors.

Lost & Found: Contact Ticket Services. Not responsible for lost or stolen items.

Families with Children:

We welcome children of all ages to our Family Series shows. For performances not listed as Family Series in our brochure, we recommend that attendees be ages four and over. Everyone entering the theatre must have a ticket, and sit quietly in a seat throughout the performance. There are closed-circuit monitors in the lobby which supervised children may use to watch performances if they need a break.

Accessible seating can be requested when purchasing tickets. Accessible parking is on levels 1 and 3 in the parking garage.

Free assistive-listening devices are available through Ticket Services for amplified performances.

Questions about your tickets?

Contact Ticket Services:
Phone: 610-758-2787 ext. 0
Email: inzactix@lehigh.edu

Box Office Hours:
TUE 12-6; WED-FRI 12-5
For ticketed events: SAT 2 hours prior to curtain, 90 mins. all other days.

All programs and artists are subject to change. In the event of a cancellation or material change, we will make every effort to contact all ticket holders. We must reserve the right to make any changes whatsoever in the event owing to any unforeseen or unavoidable cause or to cancel the event for any reason beyond our control without being liable to pay any ticket holder compensation for damages other than a ticket of comparable value to an event (based on availability).

Video recording or photography may occur for this performance that might include images of audience members. Your attendance at today’s performance grants permission for further usage of such images.

ZOELLNER ARTS CENTER

2024 **SPRING SEASON** AT A GLANCE



ERTH'S DINOSAUR ZOO 	FAMILY SERIES	FEB 2
LEHIGH UNIVERSITY JAZZ FACULTY		FEB 3
CELLOGAYAGEUM		FEB 9
THE PRINCETON SINGERS		FEB 10
LEHIGH UNIVERSITY PHILHARMONIC		FEB 16, 17
ANTIGONICK		FEB 23-MAR 2
MNOZIL BRASS		FEB 24
LES BALLETS TROCKADERO DE MONTE CARLO		FEB 29
THE RAINBOW FISH 	FAMILY SERIES	MAR 2
GARY BARTZ & LU JAZZ REPERTORY ORCHESTRA		MAR 2
EUGENE ALBULESCU		MAR 3
LAS CAFETERAS		MAR 8
LADYSMITH BLACK MAMBAZO		MAR 10
LEHIGH UNIVERSITY CHOIR, DOLCE AND GLEE CLUB		MAR 22, 23
MICHAEL JORGENSEN, VIOLIN AND STEVE BECK, PIANO		MAR 24
NIMBUS DANCE		APR 5
NEW YORK JAZZ REPERTORY ORCHESTRA		APR 7
VIOLIN WOMAN, AFRICAN DREAMS		APR 12
LEHIGH UNIVERSITY WIND ENSEMBLE		APR 14
THIS EMANCIPATION THING		APR 12-20
SPRING STUDENT JAZZ CONCERT		APR 20
LEHIGH UNIVERSITY PHILHARMONIC		APR 26, 27
LEHIGH UNIVERSITY CHORAL ARTS		MAY 3, 4
ACADEMY OF VOCAL ARTS OPERA		MAY 12
MAX WEINBERG'S JUKEBOX		MAY 17

KEY: **PRESENTING SERIES** | **MUSIC DEPARTMENT** | **DEPARTMENT OF THEATRE**

