

ZOELLNER ARTS CENTER SEASON BROCHURE 2019 2020 SEASON



captivate



inspire



**LEHIGH
UNDERGRADS
GET** **FREE
TICKETS**



educate





DEAR FRIENDS,

Thank you for your interest in Zoellner Arts Center.

Everyone involved in our productions, programs and presentations is excited about the new season filled with work specifically selected, rehearsed and refined to share with you. Our 2019-2020 season presents new performance creations, talks by scientists, readings by authors, in short, celebrations of great works of art from around the world.

Fantasy, fiction and just plain fun are integrated in and integral to the series. For example, you can find the road to *Neverland*. You can enjoy the gleeful antics of Compagnia Baccala, or the wacky mechanical inventions and polished skills of Cirque Mechanics.

Through several of our programs, we look to further our knowledge about the environment and better understand its sustainability. Speakers from National Geographic *Live!* share photos and perspectives from the Earth's oceans to awe-inspiring views from space. Giant underwater creatures make an appearance in *Prehistoric Aquarium*, a puppet production from EARTH, an Australian theatre company. Lehigh Art Galleries connects arts and the environment in *Crochet Coral Reef*, an exhibition by visual artists Christine and Margaret Wertheim. And powerful beats emanate from industrial scrap transformed into instruments by the whimsical and inventive percussionist artists of Scrap Arts Music.

Celebrating great work of the past like Beethoven's Piano Concerto No. 5 with the Curtis Symphony Orchestra along with more recent and vernacular work like hip-hop artist Rennie Harris Funkedified, a nod to the soundtrack of the 1970s, can provide a foundation and inspiration for great work of the future.

The Department of Theatre is producing *The Broken Machine*, their newly commissioned work by Liz Duffy Adams. Throughout the season you can find new work by university faculty, students and Guest Artists like jazz vibraphonist, Stefon Harris.

We have large Broadway productions like *Once* and intimate experiences like *Up Close & On-Stage* with crooner Matt Dusk. There are family shows and faithful recreations.

We certainly hope this season of great performances, informative talks, and engaging exhibitions will bring you to Zoellner Arts Center often.

Deborah Sacarakis

Deborah Sacarakis, Artistic Director

ZOELLNER

ARTS CENTER • LEHIGH UNIVERSITY

IS ON SOCIAL MEDIA:



ZoellnerArts



zoellnerarts



ZoellnerArts



zoellnerartscenter



inzactix@lehigh.edu

ZOELLNERARTSCENTER.ORG

THANK YOU TO OUR SPONSORS

Leadership Funding: Victoria E. and Robert E. Zoellner '54*

PERFORMANCE SPONSORS



W. BEALL
FOWLER '59



BRENDA & JOHN
MCGLADE '76 '81G



MEDIA SPONSORS



ADDITIONAL SUPPORT

CURTAIN WARMERS

*The Annan and
Marlene Finkelstein
Endowment Fund*

PRELUDE RECEPTIONS



SCHOOL SHOWS



STEFON HARRIS + BLACKOUT

*Supported in part by the
Klees Family Instrumental
Ensemble Endowed Fund.*

CREATIVE CAMPUS INITIATIVE: SCRAP ARTS MUSIC

*Residency supported in part by
Anne R. Kline '81 Endowed Fund
for Creatively Integrated
Programming.*

NOTATIONS

Lehigh University:
• Creative Writing Program
• Visiting Lecturers Committee
• Zoellner Arts Center

Anonymous Donor

SPECIAL ACKNOWLEDGMENTS



Zoellner Arts Center receives state arts funding support through a grant from the Pennsylvania Council on the Arts, a state agency funded by the Commonwealth of Pennsylvania and the National Endowment for the Arts, a federal agency.

To inquire about sponsorship opportunities call 610-758-5301.

Listing as of June 28, 2019

*Deceased

DONATE & ENJOY MANY BENEFITS

ZOELLNER ARTS CENTER

2 0 1 9 2 0 2 0 S E A S O N

The Friends Committee of Zoellner Arts Center Presents

WINE, SHINE & DINE

Fundraising Benefit for
Zoellner Arts Center's
Community Outreach Programs

SAT MAR 28 | 6-9PM



For details or to purchase tickets go to
zoellnerartscenter.org or call 610.758.2787

Make an impact. BECOME A FRIEND

- **Great Performances** – Support our mission to present vibrant multi-cultural Guest Artists. Tickets cover less than 50% of costs for presenting this series.
- **Community Education and Outreach** – Underwrite tickets, programming and transportation for hundreds of elementary students who benefit from our school show matinees, master classes and school partnerships.
- **Accessible Arts** – Give the healing power of the arts and a special, welcoming experience by supporting performances where great kids with special needs can be themselves – and their families can too.
- **The Creative Campus Initiative** – Help us connect the sciences, business, engineering and the humanities through transformative works of art.

Artful Affair

PINK MARTINI

SAT OCT 5

Producer Level support includes
admission to Artful Affair



LEVELS & BENEFITS

PRODUCER \$5,000 MAESTRO \$2,500 ARTIST \$1,000 FELLOW \$500 PATRON \$250 FRIEND \$100

Artful Affair Private Event:
Delicious pre-concert fare,
(2) premium seats, meet & greet
with Pink Martini



Reserved Parking

(2) Tickets to a
Guest Artist Performance

ASA Packer Society
Membership

Meet-the-Artist

Invitation to
Fun in the Footlights
Donor Reception

(2) Tickets Music or
Theatre Dept. Performance

Enjoy Pre-Concert
Prelude Receptions

Unlimited FREE
Ticket Exchange

Friends List Recognition

Access to Tickets
Before Public

610-758-2787
inzactix@lehigh.edu

Your charitable tax-deductible receipt
will be calculated in accordance with
guidelines supporting the benefits
received for your donation.



2019.2020 SEASON AT A GLANCE

GUEST ARTISTS

LEHIGH
UNDERGRADS
GET
FREE
TICKETS

Momix <i>Viva Momix</i>		SAT SEP 14	P. 9
Stefon Harris + Blackout		SAT SEP 28	P. 10
Pink Martini		SAT OCT 5	P. 12
The Ultimate Queen Celebration Starring Marc Martel		SAT OCT 12	P. 12
Scrap Arts Music <i>Children of Metropolis</i>	FAMILY-FRIENDLY!	FRI OCT 18	P. 13
National Geographic Live! <i>View from Above</i>	FAMILY-FRIENDLY!	SUN OCT 27	P. 15
Once	BROADWAY	SUN NOV 3	P. 16
Deanna Witkowski Trio	UP CLOSE & ON-STAGE	SAT. NOV 16	P. 17
Scott Bradlee's Postmodern Jukebox		FRI NOV 22	P. 18
Academy of Vocal Arts <i>Le Nozze di Figaro</i>		SUN NOV 24	P. 19
Cirque Mechanics <i>42Ft—A Menagerie of Mechanical Marvels</i>	FAMILY-FRIENDLY!	SUN DEC 1	P. 19
Bakithi Kumalo & The Graceland Tribute Band	FAMILY-FRIENDLY!	FRI JAN 24	P. 21
Curtis Symphony Orchestra Beethoven & Sibelius		SAT FEB 1	P. 22
Rennie Harris <i>Funkedified</i>	FAMILY-FRIENDLY!	SAT FEB 15	P. 23
Erth's Prehistoric Aquarium	FAMILY-FRIENDLY!	FRI MAR 13	P. 25
Sleeping Beauty Russian National Ballet Theatre	FAMILY-FRIENDLY!	SUN MAR 15	P. 26
Finding Neverland	BROADWAY FAMILY-FRIENDLY!	SUN MAR 22	P. 27
National Geographic LIVE! <i>Ocean Soul</i>		SUN MAR 29	P. 28
Matt Dusk	UP CLOSE & ON-STAGE	SAT APR 4	P. 29
Compagnia Bacçalà <i>Pss Pss</i>		SUN APR 19	P. 31
Sons of Serendip		SAT MAY 16	P. 32

DEPARTMENT OF THEATRE

Smart People	SEP 27-29, OCT 2-5	P. 10
The Broken Machine	NOV 15-17, 20-22	P. 16
Blithe Spirit	FEB 21-23, 26-20	P. 24
Godspell	APR 17-19, 22-25	P. 30

Fowler Black Box Theatre student productions DEC 6-8, MAY 2-4

Visit our website for updates and FREE events offered by the Music Dept. and the Dept. of Theatre. See page 33 for Notations.

MUSIC DEPARTMENT

NY Jazz Rep Orchestra <i>Big Band Tribute</i>		SAT SEP 7	P. 8
The Princeton Singers <i>Infinite Variety</i>		SAT SEP 21	P. 9
LUVME <i>September Songs Part I</i>		SUN SEP 8	P. 11
LUVME <i>September Songs Part II</i>		SUN SEP 22	P. 11
LUVME <i>September Songs Part III</i>		SUN SEP 29	P. 11
LU Choral Arts <i>Fauré Requiem, Britten: Rejoice in the Lamb</i>		FRI, SAT OCT 25, 26	P. 13
LU Jazz Rep Orchestra <i>Featuring Eddie Palmieri</i>		SAT NOV 2	P. 14
LU Jazz Orchestra, Ensemble, Funk Band & Combos		FRI NOV 15	P. 16
LU Wind Ensemble <i>Tea and Crumpets: Music of the British Isles</i>		SUN NOV 17	P. 19
LU Philharmonic <i>Shostakovich, Mozart & Prokofiev</i>		FRI, SAT DEC 6, 7	P. 21
LU Choral Arts <i>Christmas Vespers</i>		SUN DEC 8	P. 20
Hell's Kitchen Funk Orchestra		SAT FEB 8	P. 22
LUVME <i>February Songs Part I</i>		SUN FEB 2	P. 23
LUVME <i>February Songs Part II</i>		SAT FEB 29	P. 23
LU Jazz Faculty <i>The Great American Songbook</i>		SUN FEB 16	P. 24
LU Philharmonic <i>11th Annual Concerto Marathon</i>		FRI, SAT FEB 21, 22	P. 24
East Winds Quintet <i>Generations</i>		SUN MAR 1	P. 25
LU Jazz Rep Orchestra		FRI MAR 20	P. 26
Michael Jorgensen, Violin <i>Partita</i>		SAT MAR 21	P. 26
LU Choir, Glee Club & Dolce		FRI, SAT MAR 27, 28	P. 28
LU Jazz Orchestra, Ensemble, Funk Band & Combos		FRI APR 17	P. 30
LU Philharmonic <i>Beethoven, Poulenc & Tchaikovsky</i>		FRI, SAT APR 24, 25	P. 31
LU Choral Arts <i>Haydn: Lord Nelson Mass</i>		FRI, SAT MAY 1, 2	P. 32
LU Wind Ensemble <i>By Request</i>		SUN MAY 3	P. 32

ART GALLERIES

Lehigh Satellite Reef
Part of the worldwide
Crochet Coral Reef project
by Christine & Margaret Wertheim
and the Institute for Figuring
SEP 12 - DEC 8, 2019



Events At A Glance

- THU SEP 12 | 5-7:30PM
5PM Artist Talk in Baker Hall with Margaret Wertheim
6-7:30PM Reception in the LUAG Main Gallery

All LUAG exhibitions and programs are free and open to the public. Visitor information including directions, tour scheduling, and audio descriptions for visitors with vision loss is available at the Main Gallery. Hours: Wed - Sat 11-5pm | Sun 1-5pm | www.LUAG.org | 610-758-3615



MOMIX

GUEST ARTISTS

VIVA MOMIX

SAT SEP 14 | 7:30PM | \$32/39/42

The beautiful, athletic performers of MOMIX cross the boundaries of dance, gymnastics and acrobatics. Company favorites from *Botanica*, *Opus Cactus*, *Alchemia*, *Remix* and *Lunar Sea* combine in a performance celebrating their 35th anniversary. Each production focuses on the beauty of the human form, the beauty of nature, music, scenography and life itself.



MUSIC DEPARTMENT

NY JAZZ REP ORCHESTRA

BIG BAND TRIBUTE

SAT SEP 7

8PM | \$18 | GEN ADM

New York City's most in demand Broadway and studio musicians, as well as select Lehigh faculty, perform big band classics. Bill Warfield, director.



MUSIC DEPARTMENT

THE PRINCETON SINGERS

INFINITE VARIETY

SAT SEP 21 | 8PM | \$18

The Princeton Singers (*Theodore U. Horer '61 Artists-in-Residence*) explore the kaleidoscopic world of choral sound with their pitch perfect vocal blend and consummate musicianship. Steven Sametz, artistic director.





DEPARTMENT OF THEATRE

SMART PEOPLE

BY LYDIA DIAMOND

SEP 27, 28

OCT 2*-5 | 7:30PM

SEP 29 | 2PM | \$12 | GEN ADM

On the eve of Obama's first election, four Harvard intellectuals – a doctor, an actress, a psychologist, and a neurobiologist studying the human brain's response to race – find themselves entangled in a web of social and sexual politics as they search for love, acceptance, and identity in a complex world. Kashi Johnson, director.

**The Dept. of Theatre is offering Pay-What-You-Wish Wednesdays. Contact Ticket Services for details.*

LUVME MUSIC DEPARTMENT
SEPTEMBER SONGS



➤PART I SUN SEP 8 | 3PM | \$10 | GEN ADM

The Food of Love: Music by Rossini, Poulenc, Kim and Yung with additional songs about food by Bernstein and Salerni, including the premiere of Salerni's cycle of songs about Korean cuisine. Featuring Yunah Lee, soprano and Kyung-Eun Na, pianoforte. Part of LUVME's celebration: *A Season of Words and Music to Commemorate the Centennial of Art Song Composer Earl Kim.*



➤PART II
SUN SEP 22
3PM | \$10 | GEN ADM

Something Permanent: Music by Paul Salerni on poems by Cynthia Rylant, Dana Gioia, Mark Doty, Robert Frost, David Ferry and Natasha Tretheway. Features two song cycles with slide journeys by Linda Ganus; The Bowers Fader Duo (*Theodore U. Horger '61 Artists-In-Residence*); With soloists Jessica Bowers, mezzo-soprano, Oren Fader, guitar and special guest Domenic Salerni, violin.

➤PART III
SUN SEP 29 | 3PM | \$10 | GEN ADM

From Northern Climes: Music from Iceland, Germany and other Northern countries including Paul Salerni's setting of poems by Irish poet Seamus Heaney. Featuring (*Theodore U. Horger '61 Artists-In-Residence*) Dísella Lárusdóttir, soprano and Steven Beck, piano, with special guest, Michael Jorgensen, violin.

FEBRUARY SONGS see p. 23
Special Offer: 5 LUVME concerts/\$40
Contact Ticket Services for details

SEPTEMBER

GUEST ARTISTS

**STEFON HARRIS
+ BLACKOUT**

SAT SEP 28 | 8PM

\$38 GEN ADM \$48 PIT TABLES

Harris is one of the most innovative and impressive artists in jazz, blazing new trails on vibraphone and marimba. Winsome lyrics and atmospheric electronics define his music along with band members—Casey Benjamin, sax vocoder; Marc Cary, piano; Ben Williams, bass; and Obed Calvaire, drums—whose collective imagination and grit breathe new life into repertory staples.

Supported in part by the Klees Family Instrumental Ensemble Endowed Fund.

**"THE STANDOUT VIBRAPHONIST
OF HIS GENERATION."**

— *The New Yorker*



PINK MARTINI

GUEST ARTISTS

SAT OCT 5 | 8PM | \$39/49/59

Add a twist of hip and a shimmy with a shake as this multilingual, genre-jumping band gets you happy! "Pink Martini is a rollicking around the world musical adventure... if the United Nations had a house band in 1962, hopefully, we would be in that band." (Thomas Lauderdale, founder)



OCTOBER



GUEST ARTISTS

THE ULTIMATE QUEEN CELEBRATION

STARRING MARC MARTEL

SAT OCT 12 | 8PM | \$36/46/56

If you saw Rami Malek's Oscar-winning portrayal of Freddie Mercury in *Bohemian Rhapsody*, you heard Marc Martel's extraordinary singing voice. The film's producers sought out Martel to mix his vocals with Queen's original recordings. He is 'guaranteed to blow your mind' at this concert with *We Will Rock You*, *Somebody To Love*, *Another One Bites the Dust* and more.

**Special Opportunity: Add-on Meet & Greet with Marc Martel. Contact Ticket Services for details.*



FAMILY-FRIENDLY!

Residency supported in part by Anne R. Kline '81 Endowed Fund for Creatively Integrated Programming.

GUEST ARTISTS

SCRAP ARTS MUSIC

CHILDREN OF METROPOLIS

FRI OCT 18 | 7:30PM | \$19/29/39

Take industrial scrap, revitalize it with the arts of welding, sculpture, and choreography, merge with five extraordinary and athletic percussionists and create beautiful music. The result? A fast-paced, other-worldly performance that transforms "scrap" into "art," and "arts" into "music."

School Show

THU, FRI OCT 17, 18 | 10AM

Contact Ticket Services to order. Special group pricing available.



MUSIC DEPARTMENT

LU CHORAL ARTS

FAURÉ REQUIEM

BRITTEN: REJOICE IN THE LAMB

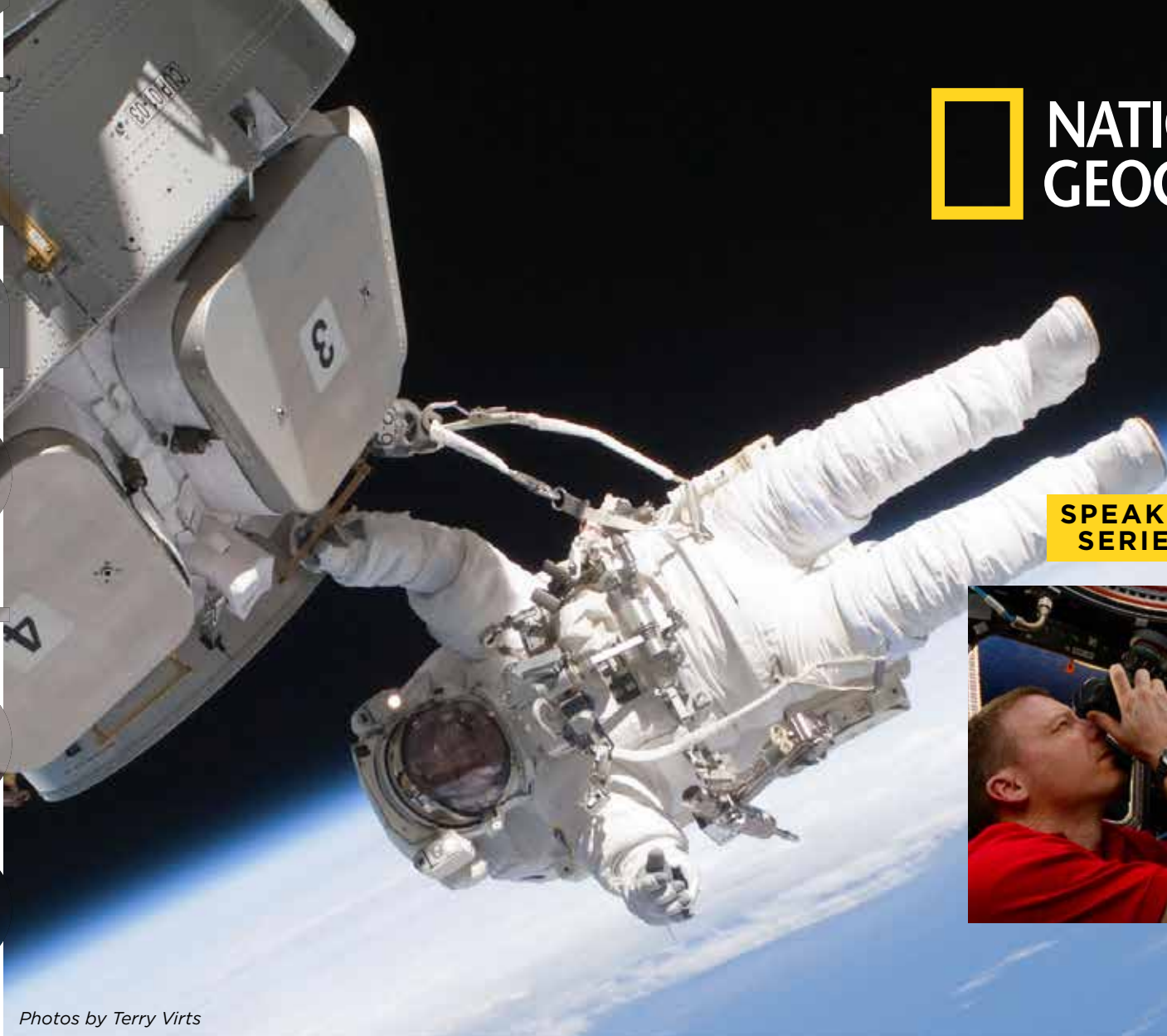
FRI OCT 25

SAT OCT 26 | 8PM | \$18

Lehigh University Choral Arts continues its celebration of 150 years of singing with one of the great choral-orchestral works of all time, Gabriel Fauré's haunting *Requiem*. We also honor the centennial year of Bethlehem poet, H.D., with Steven Sametz's setting of her *Nevermore will the wind*. Steven Sametz and Sun Min Lee, directors.

OCTOBER

NATIONAL GEOGRAPHIC *LIVE!*



SPEAKER SERIES

GUEST ARTISTS

VIEW FROM ABOVE

SUN OCT 27 | 4PM | \$20/25

Former International Space Station Commander Terry Virts helped to install the outpost's 360-degree observation module—and made good use of it, taking hours of video and hundreds of thousands of still images, which he shares in a first-hand account.

FAMILY-FRIENDLY!



Photos by Terry Virts

NOVEMBER



MUSIC DEPARTMENT
LU JAZZ REP ORCHESTRA

FEATURING THE LEGENDARY
EDDIE PALMIERI

SAT NOV 2 | 8PM | \$18

Palmieri performs with LU Jazz students, faculty and friends! One of the finest jazz pianists of the past 60 years, 10-time Grammy Award winner Palmieri is a bandleader, arranger and composer of salsa and Latin jazz. Bill Warfield, director.



GUEST ARTISTS

SUN NOV 3 | 7PM | \$59/66/72 PIT TABLES & ROWS A-C

BROADWAY

This emotionally captivating musical is the only show to have music that won an Academy Award, a Grammy Award, an Olivier Award and a Tony Award. On the streets of Dublin, an Irish musician and a Czech immigrant are drawn together by their shared love of music. Over the course of one fateful week, an unexpected friendship and collaboration quickly evolves into a powerful but complicated love story, underscored by emotionally charged music.



THE BROKEN MACHINE

DEPARTMENT OF THEATRE

A NEW PLAY COMMISSIONED BY LEHIGH UNIVERSITY'S DEPARTMENT OF THEATRE BY LIZ DUFFY ADAMS, THEODORE U. HORGER '61 ARTIST-IN-RESIDENCE IN THE PERFORMING ARTS

NOV 15, 16, 20-22 | 7:30PM • NOV 17 | 2PM | \$12 | GEN ADM

A burnt-out hermit nurses a broken arm and makes lists from memory—of endangered species, moments of Lost Time, Incorrect States of Mind—in company with her only friend, a gray fox with a bad attitude. When wild fires approach they flee through the wilderness, pursued by would-be rescuers and threatened by a mythic-punk psychopomp. Pam Pepper, director.

**The Dept. of Theatre is offering Pay-What-You-Wish Wednesdays. Contact Ticket Services for details.*

LIZ DUFFY ADAMS “IS AN ARTIST OF PLAYFUL AND HIGHLY LITERATE IMAGINATION, RADICAL INSTINCTS, AND SARDONIC BUT GENEROUS HUMOR.”

— San Francisco Bay Guardian



MUSIC DEPARTMENT
**LU JAZZ ORCHESTRA,
ENSEMBLE, FUNK BAND
& COMBOS**

FRI NOV 15 | 8PM | \$12

The ensembles perform contemporary and traditional jazz. Bill Warfield, director.



UP CLOSE & ON-STAGE

GUEST ARTISTS
DEANNA WITKOWSKI TRIO

SAT NOV 16

6PM Dinner & Show | \$62
7PM Show Only | \$25 | GEN ADM

Sit on-stage with the winner of the Great American Jazz Piano Competition and a past guest on Marian McPartland's *Piano Jazz*. New York-based pianist, composer and vocalist Witkowski has been heralded for her “consistently thrilling” playing (*All Music Guide*). Her recordings include liturgical music, Brazilian jazz, improvisations on classical works, and arrangements of Cole Porter standards.

NOVEMBER



GUEST ARTISTS

==== *Scott Bradlee's* ====

POSTMODERN JUKEBOX

FRI NOV 22 | 8PM | \$49/59/69

Our favorite house band is back and ringing in the holiday season with a festive show! **A Very Postmodern Christmas** mashes up timeless holiday classics and pop hits with vintage doo-wop, ragtime, Motown and jazz melodies with snazzy instrumentation to create the ultimate jingle jangle speakeasy concert vibe. Their worldwide legion of fans account for over one billion YouTube views and hundreds of sold-out shows.



MUSIC DEPARTMENT
LU WIND ENSEMBLE

TEA AND CRUMPETS:
MUSIC OF THE BRITISH ISLES

SUN NOV 17 | 3PM | \$15

Works include *Trooping the Colour Suite* by David Diggs and *Henry the Fifth Overture* by Ralph Vaughan-Williams. David Diggs, director.



OPERA & LIVE ORCHESTRA!

GUEST ARTISTS
ACADEMY OF VOCAL ARTS

LE NOZZE DI FIGARO

SUN NOV 24 | 7PM | \$30

Great voices accompanied by live orchestra share the drama and the passion of classic opera. The Academy of Vocal Arts in Philadelphia trains young artists with tremendous potential as international opera soloists. These young singers share their talent, training and unique gifts on our concert stage.



MECHANICS

DECEMBER

Cirque



GUEST ARTISTS
42FT—A MENAGERIE OF MECHANICAL MARVELS

SUN DEC 1 | 4*PM | \$19/29/39

At the center of every circus rests a 42ft ring full of thrills, laughs and excitement. This ring is transformed, Cirque Mechanics-style, with human-powered inventions such as a galloping metal horse and a rotating tent frame serving strongmen, tumblers and aerialists. Cirque's playful presence invites all ages to dream and be amazed.

FAMILY-FRIENDLY!



SENSORY FRIENDLY

***Relaxed Performance:** This is a sensory-friendly show which creates a judgement-free and inclusive environment for patrons with a wide range of sensory and communication differences, including individuals on the autism spectrum, young children and families who would benefit from a relaxed theatre experience.

WHERE YOUR KIDS CAN BE THEMSELVES




MUSIC DEPARTMENT
LU PHILHARMONIC
 SHOSTAKOVICH, MOZART & PROKOFIEV
FRI DEC 6
SAT DEC 7 | 8PM | \$18
 Repertoire: Shostakovich, *Festive Overture*; Mozart: *Concerto for Flute*, with Robin Kani, soloist; Prokofiev, *Symphony No. 5*. Eugene Albuлесcu, director.




MUSIC DEPARTMENT
LU CHORAL ARTS

CHRISTMAS VESPERS

SUN DEC 8 • 4 & 8PM

PACKER MEMORIAL CHURCH

Lehigh University Choral Arts presents its annual Christmas gift to the community. Steven Sametz, artistic director; Sun Min Lee, associate director.

Free; No Tickets Required;
Early arrival suggested.



GUEST ARTISTS

BAKITHI KUMALO & THE GRACELAND TRIBUTE BAND

FRI JAN 24 | 7:30PM | \$25/30 **FAMILY-FRIENDLY!**

South African artist Kumalo, the original bass player on Paul Simon's *Graceland*, whose iconic bass lines and bright smile bring authenticity to a show that has passion, energy and pulsing rhythms featuring all of the Grammy-winning hits (*Call Me A!*, *Graceland*, *Diamonds on the Soles of Her Shoes*, etc).

School Show
FRI JAN 24 | 10AM
 Contact Ticket Services to order.
 Special group pricing available.



GUEST ARTIST
CURTIS SYMPHONY ORCHESTRA

BEETHOVEN & SIBELIUS

SAT FEB 1 | 4PM | \$36/43/48

Emerging virtuosos all, the musicians of the Curtis Symphony Orchestra meld into an expression of something much greater. Repertoire: Beethoven, Piano Concerto No. 5 (*Emperor*); Sibelius, Symphony No. 2. Osmo Vänskä, conductor; Jonathan Biss, piano.

MUSIC DEPARTMENT

HELL'S KITCHEN FUNK ORCHESTRA

SAT FEB 8 | 8PM | \$18

NYC-based Hell's Kitchen Funk Orchestra plays selections of R&B, funk and experimental jazz from their newest record release. Bill Warfield, director.



LUVME MUSIC DEPARTMENT
 FEBRUARY SONGS



➤ PART I

SUN FEB 2 | 3PM | \$10 | GEN ADM

Letters: Music by Schubert, Ives and Salerni featuring Earl Kim's *Letters Found Near a Suicide*. Featuring Jan Opalach, bass-baritone and Ted Taylor, piano. Part of LUVME's celebration: *A Season of Words and Music to Commemorate the Centennial of Art Song Composer Earl Kim*.

➤ PART II

SAT FEB 29 | 8PM | \$10 | GEN ADM

Sam and Earl: Earl Kim compositions based on texts by Samuel Beckett: *Eh*, *Joe* adapted for woman's voice, actor, and chamber ensemble from a television play and *Footfalls*, one-act opera for two singers and two keyboard players. Disella Lárusdóttir, soprano and Jessica Bowers, mezzo-soprano (*Theodore U. Horger '61 Artists-In-Residence*).



FEBRUARY



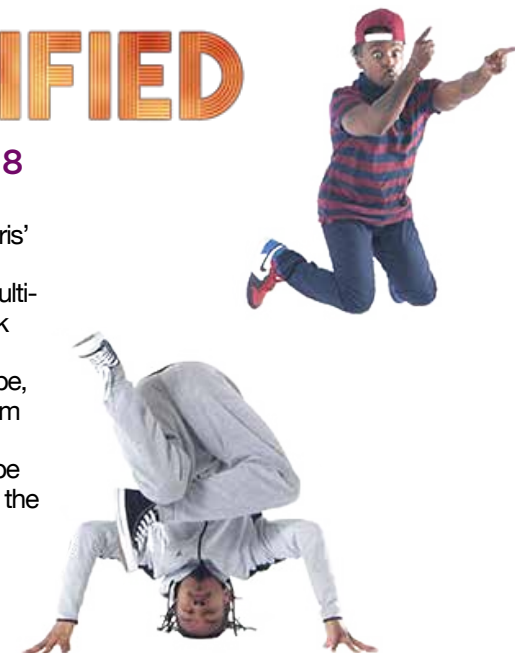
GUEST ARTISTS

RENNIE HARRIS
FUNKEDIFIED

SAT FEB 15 | 8PM | \$28/38

Rennie Harris is a Philadelphia hip-hop legend. In his new work *Funkedified*, Harris' Puremovement company pushes the boundaries of street dance to create a multimedia performance set to the soundtrack of 1970s funk music and more. Through live musicians and an eclectic soundscape, audiences follow his personal journey from the culture of funk music to the evolution of hip-hop. Puremovement dancers will be accompanied by The Hood Lockers and the New York funk band Invincible.

FAMILY-FRIENDLY!



FEBRUARY

MUSIC DEPARTMENT LU JAZZ FACULTY

THE GREAT AMERICAN SONGBOOK

SUN FEB 16 | 3PM | \$15 | GEN ADM

The group performs the music of popular American composers from Cole Porter to Stevie Wonder and more. Bill Warfield, director.



MUSIC DEPARTMENT

EAST WINDS QUINTET GENERATIONS

SUN MAR 1 | 3PM | \$15

Trace the musical “family tree” of five generations of composers, from teacher to student: Alexander von Zemlinsky to Arnold Schoenberg; Earl Kim to Paul Salerni; and finally Salerni to his student, Tae Sakamoto. Features a performance of Kim’s tour de force *Rattling On*. This concert marks the finale of the centennial celebration of Earl Kim.



MUSIC DEPARTMENT LU PHILHARMONIC

11TH ANNUAL CONCERTO MARATHON
MENDELSSOHN & GRIEG

FRI FEB 21 • SAT FEB 22 | 8PM | \$18

The annual concerto marathon features student soloists as well as full orchestra compositions. Repertoire: Mendelssohn, *Hebrides Overture*; Grieg, *Peer Gynt Suite*. Eugene Albulescu, director.

DEPARTMENT OF THEATRE

BLITHE SPIRIT

BY NOËL COWARD

FEB 21, 22, 26-29 | 7:30PM
FEB 23 | 2PM | \$12 | GEN ADM

Noël Coward at his comic best! English novelist Charles Condomine invites the wacky medium, Madam Arcati, to perform a séance for him and friends in hopes of learning some tricks for a character in his next book. He is skeptical of her powers, of course. But when the séance appears to work farce ensues as Charles is literally haunted by his deceased first wife, Elvira--who has her own agenda. 1940s fun for all! Augustine Ripa, director.

A Virginia M. and Bernard R. Hale '30 Production

*The Dept. of Theatre is offering Pay-What-You-Wish Wednesdays. Contact Ticket Services for details.



ERTH'S PREHISTORIC AQUARIUM

GUEST ARTISTS

FRI MAR 13
7:30PM | \$20/25/35

Jump in! Explore unknown ocean depths where prehistoric marine reptiles lived eons ago – and maybe live still today! Erth's actors, technology, giant puppets, science and imagination create an amazing visual experience that connects young audiences to the real science of paleontology.

FAMILY-FRIENDLY!

School Show
FRI MAR 13 | 10AM
Contact Ticket Services to order.
Special group pricing available.



MARCH

MARCH

SLEEPING BEAUTY

RUSSIAN NATIONAL
BALLET THEATRE



GUEST ARTISTS

SUN MAR 15 | 4PM | \$36/43/48

FAMILY-FRIENDLY!

Tchaikovsky's adored music and Petipa's challenging yet beautiful choreography have made *The Sleeping Beauty* one of the most popular ballets in modern day repertoire. Be spellbound as the beneficent Lilac Fairy outwits the evil Carabosse Fairy and spares Princess Aurora in this classic sleepy fairy tale brought to luxurious life by the finest Russian dancers.

MUSIC DEPARTMENT

LU JAZZ REP ORCHESTRA

FRI MAR 20 | 8PM | \$15 | GEN ADM

The ensemble performs standards from the Big Band songbook. Bill Warfield, director.



MUSIC DEPARTMENT

MICHAEL JORGENSEN

PARTITA

SAT MAR 21 | 8PM \$15

Violinist Jorgensen, guitarist Oren Fader (*Theodore U. Horer '61 Artist-in-Residence*), and harpist Lynette Wardle perform Bach's poignant dance suite for solo violin, Partita No. 2, celebrating its 300th anniversary and featuring the momentous *Chaconne*. Also works by Paul Salerni, Manuel De Falla and Camille Saint-Saëns!

FINDING NEVERLAND

The Story of How Peter Became Pan

BROADWAY

GUEST ARTISTS

SUN MAR 22 | 7PM | \$59/69/74

Based on the Academy Award-winning film of the same name, *Finding Neverland* is the Broadway musical that tells the fascinating story of how Peter became Pan. Take a flight of fancy with author J.M. Barrie and meet the inspirations for his fabulous and fantastical characters. This magical production is by the same team behind *Shakespeare in Love*, *Chicago*, and *Pippin*.

FAMILY-FRIENDLY!



MUSIC DEPARTMENT

LU CHOIR, GLEE CLUB & DOLCE

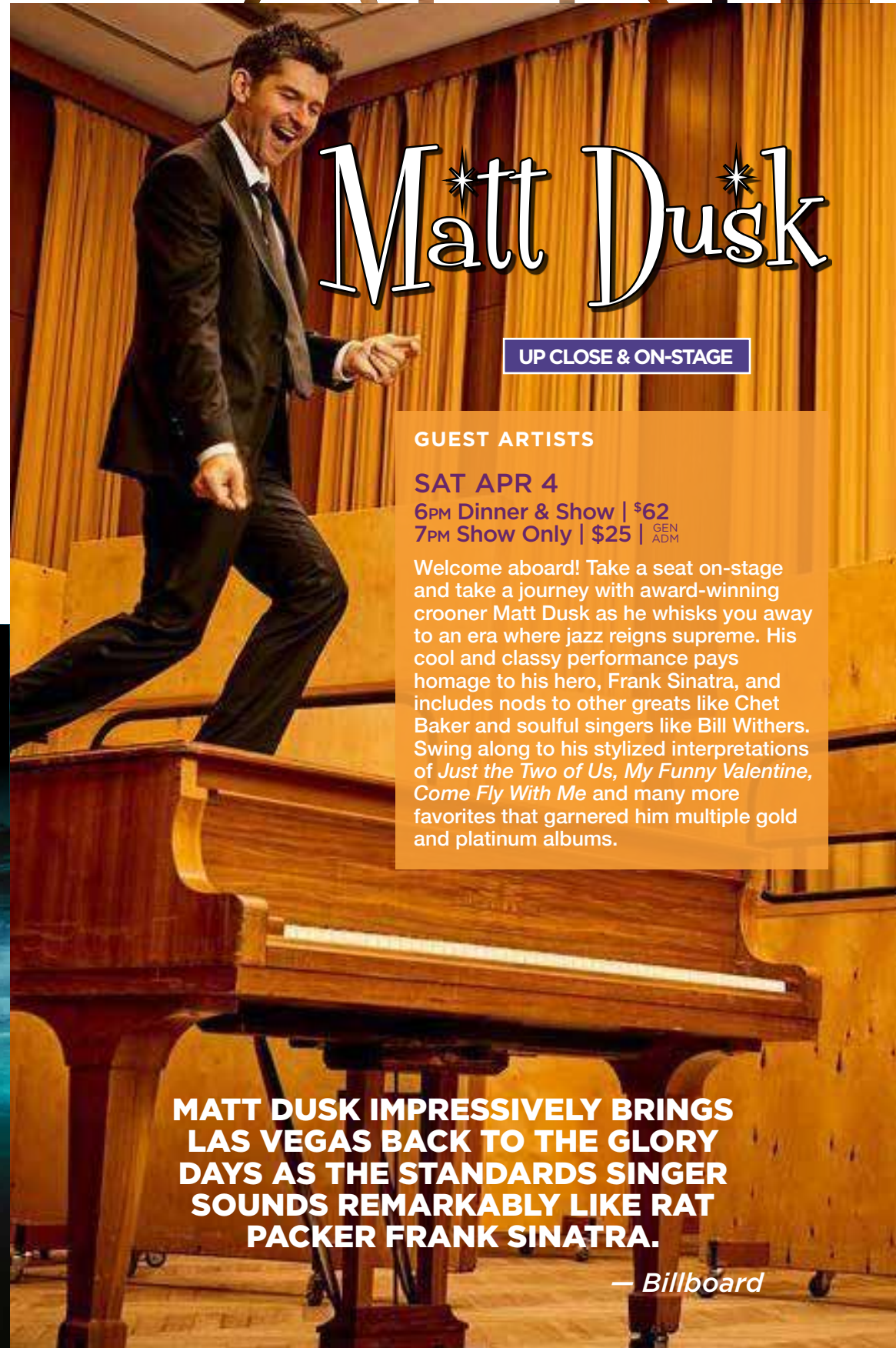
WITH THE PRINCETON SINGERS

GROUNDBREAKERS

FRI MAR 27 • SAT MAR 28 | 8PM | \$18

Certain composers create entirely new sound worlds. Join us for this celebration of the creative genius of groundbreakers, with music from Machaut to Pärt to the Beatles. Steven Sametz and Sun Min Lee, directors.

APRIL



Matt Dusk

UP CLOSE & ON-STAGE

GUEST ARTISTS

SAT APR 4

6PM Dinner & Show | \$62
7PM Show Only | \$25 | GEN ADM

Welcome aboard! Take a seat on-stage and take a journey with award-winning crooner Matt Dusk as he whisks you away to an era where jazz reigns supreme. His cool and classy performance pays homage to his hero, Frank Sinatra, and includes nods to other greats like Chet Baker and soulful singers like Bill Withers. Swing along to his stylized interpretations of *Just the Two of Us*, *My Funny Valentine*, *Come Fly With Me* and many more favorites that garnered him multiple gold and platinum albums.

MATT DUSK IMPRESSIVELY BRINGS LAS VEGAS BACK TO THE GLORY DAYS AS THE STANDARDS SINGER SOUNDS REMARKABLY LIKE RAT PACKER FRANK SINATRA.

— *Billboard*

MARCH

NATIONAL GEOGRAPHIC LIVE!



GUEST ARTISTS

OCEAN SOUL

SUN MAR 29 | 4PM | \$20/25

From the glacial waters of the North Atlantic to the balmy central Pacific, National Geographic photographer Brian Skerry shares the oceans' stories from his more than 10,000 hours underwater. Featuring images he captured while on assignment, Skerry offers a mesmerizing glimpse into the 'soul of the sea.'

SPEAKER SERIES



©Mauricio Handler

©Brian Skerry



MUSIC DEPARTMENT
**LU JAZZ ORCHESTRA,
ENSEMBLE, FUNK BAND
& COMBOS**

FRI APR 17 | 8PM | \$12 | GEN ADM

The ensembles perform classic and contemporary jazz.
Bill Warfield, director.



DEPARTMENT OF THEATRE
GODSPELL

MUSIC BY STEPHEN SCHWARTZ
BOOK BY JOHN-MICHAEL TEBELAK

APR 17, 18, 22-25 | 7:30PM
APR 19 | 2PM | \$12 | GEN ADM

The first major musical from three-time Grammy and Academy Award winner, Stephen Schwartz (*Wicked*, *Pippin*, *Children of Eden*), features Jesus' messages of kindness, tolerance, and love vibrantly come to life. Led by the international hit, *Day by Day*, an eclectic blend of songs ranging in style from pop to vaudeville illustrate the Gospel according to St. Matthew. Jennifer Wescoe '98, director.

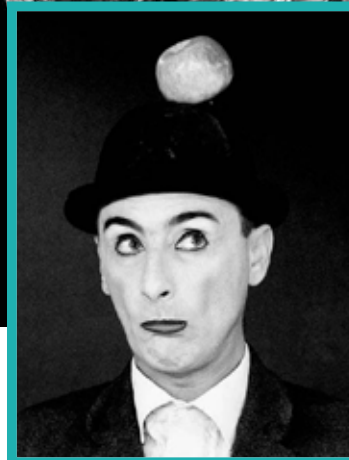
*The Dept. of Theatre is offering Pay-What-You-Wish Wednesdays. Contact Ticket Services for details.

GUEST ARTISTS
COMPAGNIA BACCALÀ

PSS PSS

SUN APR 19 | 4PM | \$20/30

Two modern-day clowns take to the stage. Brilliant, tender, hilarious and ingenious, inspired by Chaplin, Keaton and the stars of silent films, Baccalà's performance of enthralling physicality and exquisite expression has delighted audiences around the world. Inventive, exciting, ridiculous, this breathtaking *pas de deux* of mishaps and acrobatics will have you laughing long after you leave the theatre.



MUSIC DEPARTMENT
LU PHILHARMONIC

BEETHOVEN, POULENC
& TCHAIKOVSKY

FRI APR 24
SAT APR 25 | 8PM | \$18

Repertoire: Beethoven, Overture to *Fidelio*; Poulenc, Concerto for Two Pianos, with Jerome Lowenthal and Ursula Oppens, piano soloists; Tchaikovsky, Symphony No. 5. Eugene Albulescu, director.



MUSIC DEPARTMENT
LU CHORAL ARTS

HAYDN: *LORD NELSON MASS*

FRI MAY 1 • SAT MAY 2 | 8PM | \$18

Join the 200 singers of Lehigh University Choral Arts, professional orchestra, and an international cast of soloists for what has been called Haydn's greatest single composition. Steven Sametz and Sun Min Lee, directors.



MAY

MUSIC DEPARTMENT
LU WIND ENSEMBLE

BY REQUEST

SUN MAY 3 | 3PM | \$15

Students of the Wind Ensemble suggest the works to be performed at this concert. Come and enjoy their choices! David Diggs, director.



GUEST ARTISTS
SONS OF SERENDIP

SAT MAY 16 | 8PM | \$10/20/30

Recently featured on *America's Got Talent*, these four friends and talented musicians—comprised of a harpist, cellist, pianist and lead vocalist—serendipitously came together at graduate school and began what they describe as a long, beautiful journey of creating music that touches people's hearts. A *Billboard* charting act, they offer fresh interpretations of popular music in the hope their audiences lives will be a little better—even if just for a moment.

Before this concert...
2020-2021 Season Preview Party:
Subscribers & donors are invited!
Contact Ticket Services for details.

Senior, student, group, LU faculty/staff and LVAIC discounts available. ———

NOTATIONS

 LECTURES & OTHER PRESENTATIONS
FEATURING LITERARY ARTS

Presented by Lehigh University Creative Writing Program, Visiting Lecturers Committee and Zoellner Arts Center with support from an Anonymous Donor.



LORI GOLDSTEIN WED SEPT 25 | 7PM

Goldstein, a Lehigh University graduate, is a journalist, editor and author of the acclaimed, VOYA-starred young adult contemporary fantasy series *Becoming Jinn* and *Circle of Jinn*, modern spins on the traditional tale of wish-granting genies. Her new novel, *Screen Queens*, chronicles the challenges of three teen girls who attend a startup incubator in Silicon Valley and learn what it means to compete in the male-dominated world of tech.



IBRAM X. KENDI TUE OCT 29 | 7PM

HOW TO BE AN ANTIRACIST **MLK Keynote Speaker**

Kendi is a professor of History and International Relations and the founding director of the Antiracist Research and Policy Center at American University. A *New York Times* bestselling author, he received the Hurston/Wright Legacy Award, an NAACP Image Award, and the 2016 National Book Award for Nonfiction for *Stamped from the Beginning: The Definitive History of Racist Ideas in America*. In his newest book *How to Be an Antiracist* Kendi asks readers to consider what an antiracist society might look like, and how citizens can play an active role in building it.



LEE UPTON THU NOV 14 | 7PM

The author of 14 books, most recently, *Visitations: Stories*, and *Bottle the Bottles the Bottles the Bottles: Poems*, her work has appeared in *The New Yorker*, *The New Republic*, *The Atlantic*, *World Literature Today*, *Bennington Review*, and in three editions of *Best American Poetry*. A librettist and a literary critic as well as a poet and fiction writer, she is the Francis A. March Professor of English and Writer-in-Residence at Lafayette College.



BRENDA SHAUGHNESSY TUE FEB 4 | 7PM

Shaughnessy is the author of five poetry collections, most recently *The Octopus Museum*. 2012's *Our Andromeda* was a *New York Times*' 100 Notable Book, a finalist for the Griffin International Prize and the Kingsley Tufts Prize. She's the recipient of a 2018 Literature Award from the American Academy of Arts and Letters and a 2013 Guggenheim Foundation Fellowship.



KATE RACCULIA TUE MAR 3 | 7PM

Racculia is the genre bending author of three novels, including *This Must Be the Place* and *Bellweather Rhapsody*, winner of the American Library Association's Alex Award, an honor for a work written for adults. Her new novel, *Tuesday Mooney Talks to Ghosts*, tells the story of a dying billionaire, a cast of dreamers and a citywide treasure hunt.

WRITER'S PANEL: INSPIRATION AND INVENTION THU MAR 26 | 4PM

Established writers and industry professionals talk about existing work that inspired and fueled their writing processes as well as the techniques and forms that produce new work. Moderated by Bob Watts, Lehigh University professor, poet and nonfiction writer, with panelists Sonya Chung, novelist; Robb Fillman poet; Stephanie Powell Watts, fiction and nonfiction writer; Kate Prosswimmer, editor of children's literature; Julie McKnight, novelist.

ADDITIONAL EVENTS

Zoellner Arts Center is proud to host a number of campus and community events throughout the year. Check each organization's website for details.

Sesame Street Road Trip	SUN SEP 15
Ballet Guild of the Lehigh Valley Presents Pennsylvania Youth Ballet in <i>The Nutcracker</i> With LIVE MUSIC by The Southside Sinfonietta - Eugene Albuлесcu, Conductor	SAT DEC 14 SUN DEC 15
PA Philharmonic: <i>Holiday Brass</i>	SUN DEC 22
The Bach Choir of Bethlehem Bach Festival Concert	SAT MAY 9 SAT MAY 16
Touchstone Theatre Young Playwrights Festival	SAT MAY 9
Choral Composers Forum Concert	SUN JUN 28

TICKETED EVENTS

OUR GIFT CERTIFICATES NEVER EXPIRE.

Purchase these at Ticket Services or online in any amount and give the gift of entertainment.

Brochure Photography:

Julita Borko, CAMI, Alexander Daev, Jeremy Daniel, David Debalko, Chris Eshelman, Fotopippo, Will Frece, Linda Ganus, Jason Gardner, Mauricio Handler, Chris Hornbecker, Jason King, John Kish IV, Charis Lasky, Elizabeth Leitzell, Heidrun Lohr, Christa Neu, LU Dept. of Theatre, LU Music Dept., Brian Mengini, Max Pucciariello, Igor Ripak, Maika Schulz, Ivan Schustak, Bryan Skerry, Terry Virts, Stephanie Veto.

HOLD YOUR SPECIAL OCCASION AT ZOELLNER!

Perfect for receptions, recitals, parties, ceremonies and more!



Contact our rental manager: 610-758-5654 or visit zoellnerartscenter.org

TICKETS ON SALE NOW!

BUY NOW TO GET THE BEST SEATS AVAILABLE



CONTACT US

IN PERSON

Zoellner Arts Center
Ticket Services
420 East Packer Ave.
Bethlehem, PA 18015

ONLINE

www.zoellnerartscenter.org
email: inzactix@lehigh.edu

PHONE

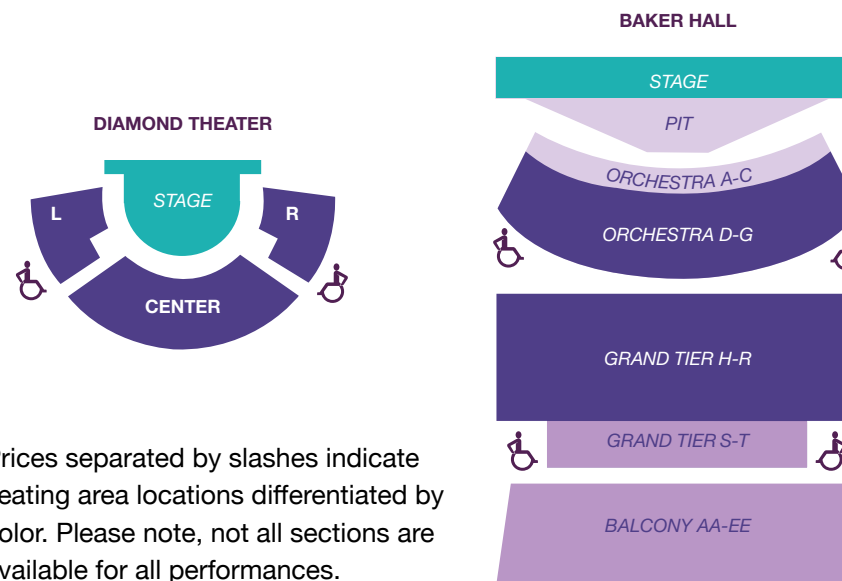
610-758-2787 ext: 0

Box Office Hours: TUE 12-6PM, WED-FRI 12-5PM*

For ticketed events: SAT 2 hours prior to curtain, 90 mins. all other days.

*Contact us for summer hours (July-Aug).

Senior, student, group, LU Faculty/Staff and LVAIC discounts available.



Prices separated by slashes indicate seating area locations differentiated by color. Please note, not all sections are available for all performances.

Zoellner is a fully accessible facility. Free assistive listening devices available. Check online for details.

Baker Hall: All seats except ADA seating and those in row S are accessed by steps.
Diamond Theater: All seats except ADA seating are accessed by steps.

PARKING IS FREE in the garage attached to the center for all Guest Artists, Notations, LU Music Dept. and Dept. of Theatre events (excluding Christmas Vespers in Packer Chapel). Please note, there may be a parking charge for non-Zoellner sponsored events (see page 34).

All programs and artists are subject to change. In the event of a cancellation or material change, we will make every effort to contact all ticket holders. We must reserve the right to make any changes whatsoever in the event owing to any unforeseen or unavoidable cause or to cancel the event for any reason beyond our control without being liable to pay any ticket holder compensation for damages other than a ticket of comparable value to an event (based on availability).



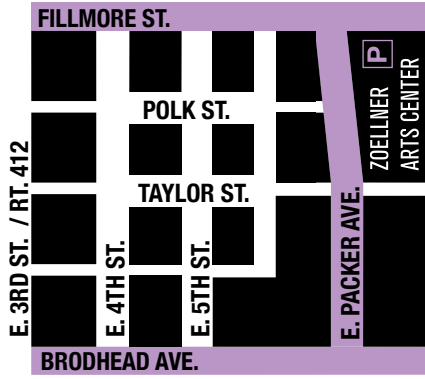
ARTS
WITH IMPACT

ZOELLNER ARTS CENTER

420 East Packer Avenue
Bethlehem, PA 18015
(610) 758-2787

Non-Profit Org.
US Postage
PAID
Permit No. 504
Lehigh Valley, PA

2019 SEASON 2020 BROCHURE



LEHIGH
UNIVERSITY