

ZOELLNER

ARTS CENTER • LEHIGH UNIVERSITY

420 East Packer Avenue, Bethlehem, PA 18015-3179.

Fowler Black Box Theatre

Technical Information Package



Facility Description: The Zoellner Arts Center, a division of Lehigh University’s College of Arts and Sciences, is a 26-year-old arts center housing four resident departments: Lehigh University Art Galleries, the Departments of Music and Theatre, and Administration. All building resources are shared among these four departments. There are three performance spaces: Baker Hall, a 940-seat concert/proscenium stage; Diamond Theatre, a 3/4 thrust stage seating 307; and the Fowler Black Box Theatre, a small multi-configuration space.

Table of Contents - Titles link to indicated section

Contact info.....	Page 3
Seating.....	Page 3
Stage.....	Page 3
Stage Floor.....	Page 3
Fly System.....	Page 3
Stretch Wire Grid.....	Page 3
Soft Goods.....	Page 3
Lighting Control.....	Page 3
Lighting Positions.....	Page 3
Lighting Inventory.....	Page 4
Audio.....	Page 4
Intercom & Paging.....	Page 4
Video Projection.....	Page 5
Dressing Rooms.....	Page 6
Loading Dock.....	Page 6
Internet Access.....	Page 6
Drawings	
Loading Dock.....	Page 7
Dressing Rooms.....	Page 8
Rep Light Plot.....	Page 9
Stage & Seating Layout 1.....	Page 10
Stage and Seating Layout 2.....	Page 11

Address: Shipping and physical address: 420 East Packer Avenue, Bethlehem, PA 18015-3179.

1. Contacts Info:

Position	Name	Email	Office Phone
Exeutive Director	Mark F. Wilson	mawa20@lehigh.edu	610-758-5323
Artistic & Admin. Coordinator	Isabele Barone	imb221@lehigh.edu	610-758-5356
Production Manager	Joshua Kovar	jok7@lehigh.edu	610-758-5894
Assistant Production Manager	R. Elizabeth Miller	rema@lehigh.edu	610-758-5653
Assistant Production Manager	Kyle Rudgers	kdr222@lehigh.edu	610-758-5634
Lighting Coordinator	Justin Burns	jeb719@lehigh.edu	610-758-5444
Video Coordinator	Andrew Collings	ajc521@lehigh.edu	610-758-5644
Audio Coordinator	Phil Ingle	phi214@lehigh.edu	610-758-5871
Stage & Events Coordinator	Heather Hacker	hah219@lehigh.edu	610-758-5367
Hospitality	Jennifer Mack	jem3@lehigh.edu	610-758-5654
Rentals & Scheduling Manager	Becky Eshelman	ree2@lehigh.edu	610-758-5387
Director of Audience Services	Sandy Anderson	saba@lehigh.edu	610-758-6641

2. Stage Floor: Masonite with a plywood sub floor, painted black.

3. Stretch Wire Grid:

- a) Reachable via tech booth on the 2nd floor.
- b) Rigging to the grid is not allowed.

4. Soft Goods:

- a) There are 14 black velour curtains on track hung from catwalks on all four sides.
 - i) Each curtain is 18’x12’ with 0% fullness.

5. Lighting Control:

- a) ETC ION, running EOS 2.9x software, located in tech booth (has limited view of stage)
- b) Designer/Tech table with remote video setup is available
- c) House/run light control by ETC Paradigm system (control located both in HL Booth and via iPad or console)
- d) The black box lighting system is dimmer per circuit and has relay and other modules available. 96 ETC Sensor 3 dimmers. This includes non-dim and house/work lights
- e) Networking: ETC Net3 connections are located in multiple locations, with ETC Net3 Gateways are available for input or output.

6. Lighting Positions:

The black box has multiple lighting positions:

- a. Tension grid
- b. Gallery pipes (surrounding grid)

7. Lighting Inventory:

The Fowler Black Box and Zoellner Arts Center rely on a shared inventory, and as such, all items are subject to availability. Contact the Lighting Coordinator for the most current inventory.

Manuf.	Unit Type/Model #	BB	Share	Notes
Ellipsoidal				
ETC Conventional Bodies		95		
ETC	Source 4 19°	13		BH-11 FOH, 10 BH barrels only
ETC	Source 4 26°	25		BH-4 FOH, 5 BH barrels only
ETC	Source 4 36°	25		BH-2 FOH
ETC	Source 4 50°	18		
ETC	Source 4 Zoom 15-30°	14		7 Baker FOH REP
Wash				
ETC	ColorSource PAR Deep Blue	12		w/ Medium and Wide ROUND lenses available
Chauvet	Chauvet COLOrado 1-Quad Zoom		12	Stored in DT
ETC	Source 4 PAR	12		All S4 Pars have standard lens kits; 12 XWFL lenses available in FBB
Cyc/Strip				
Chauvet	Colorail IRC		8	Stored in BH, HL 3rd floor storage
L&E	L & E Ministrips		5	3 cir, 10 lamps per cir, 5 color frames per, 6' - 0"
Strand	Orion 1 Model 4005		18	1cir, 1cell ground cyc
Moving Head Fixtures				
Chauvet	Rogue 1 Wash		12	Stored in DT
VariLite	VL1000-TS		4	1 also has loud CMY, 1 has internal wiring failure.
VariLite	VL1100-TS		2	Gobos matched to the 4 VL1000's

8. Audio:

- a. Mixing Console: Yamaha TF1
- b. Playback: Qlab 4 on a Mac.
- c. Speakers: 4 x EAW JF80
- d. Amplifiers: 8 Crown CTs 1200
- e. Powered speakers: 4 QSC K-10s,
- f. Powered speakers: 2 QSC KS118 Subs
- g. 12 channels of ULX-D handhelds or belt packs are available.
- h. Various Shure, AKG, and DPA mics are available
- i. Microphone and Speaker patch points are located throughout theater.

9. Intercom/paging:

- a) Clear Com 2 channel party line system with remote SM station.
- b) In-house FOH & backstage paging available
- c) Patch points located throughout theater
- d) Single channel and dual channel belt packs available.
- e) Single and double muff headsets available.

10. Video Projection: Baker Hall and Zoellner Arts Center rely on a shared inventory, and as such, all items are subject to availability.

Projectors:

- a. 4 Epson Pro L1505UNL 12,000 lumen laser, Resolution: WUXGA 1920x1200.
Various lens options are available.

Screens, flown or ground supported:

- a. 1 Epson PowerLite Pro G7000W, 6500 lumen, Resolution: WXGA 1280x800.
 - i. Various lens options available.
- b. 1 24'x15' Draper Stagescreen portable folding screen.
- c. 1 14.6'x9.3' Draper Ultimate portable folding screen
- d. 1 8' tripod screen.

Switchers:

- a. 1 Roland V-800HD multi-format video switcher
- b. 1 Blackmagic Design Smart Videohub 12x12
- c. Blackmagic Design ATEM Mini Pro

Presentation Remotes:

- a. 2 Dsan Perfect Cue Micros

Confidence Monitors:

- a. 2 32" LCD flat screen monitors

Computers:

- a. Various Apple Macintosh computers
- b. Software available
 - i. Qlab
 - ii. Keynote & PowerPoint

11. Dressing Rooms: Located on lower level, one floor below Fowler Black Box Theater.

- a) Dressing rooms are a shared resource and might not all be available.
- b) There are 2 individual dressing rooms with private shower/ washroom.
- c) There are 2 4-person dressing rooms with private shower/ & a shared washroom.
- d) There are 2 ensemble dressing rooms. The women's seats 26 and the men's 19. Each has showers and shared washrooms.
- e) Hospitality is usually located inside the greenroom or directly outside.
- f) Laundry room has a single washing machine & an electric dryer.
- g) An iron and a Jiffy steamer are available upon request.
- h) A wig dryer is available upon request.
- i) Rolling wardrobe racks are available.

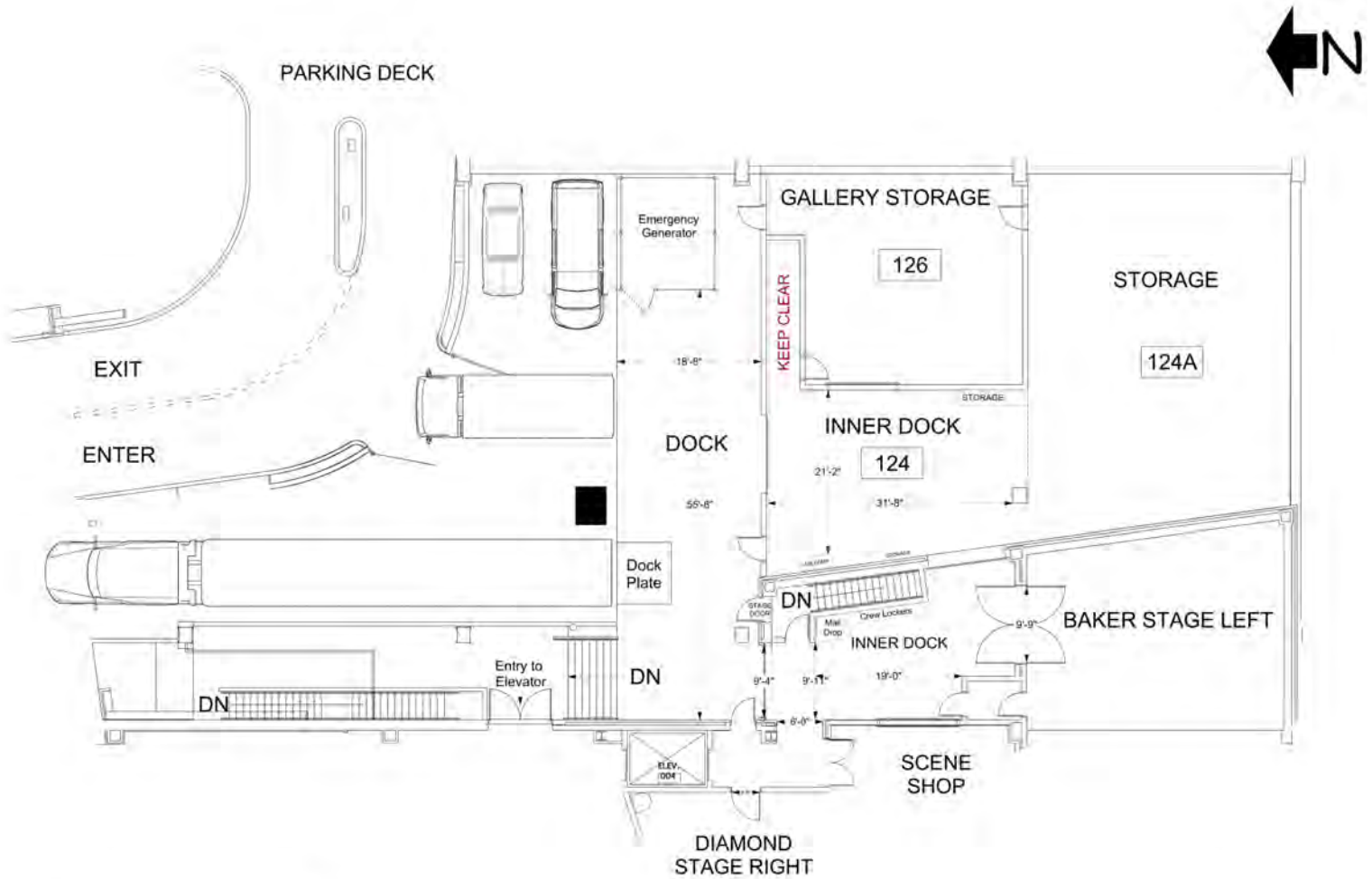
12. Loading Facilities:

- a) The loading dock is located at 420 East Packer Ave. It is immediately to the right of the parking lot entrance. Please see page 5 for drawing.
- b) Dock will accommodate a 53' trailer and tractor.
 - a. Driveway opening is 14' high.
 - b. The dock is 3' above driveway & has an integral, adjustable dock plate.

13. Internet Access:

- a) There is Wi-Fi available throughout the building, SSID: lehigh-guest. No password needed.
- b) A LAN jack is available in the greenroom. No password needed.
- c) There is a phone located in the greenroom for guest use.
 - a. Long distance calls must be made using calling cards.

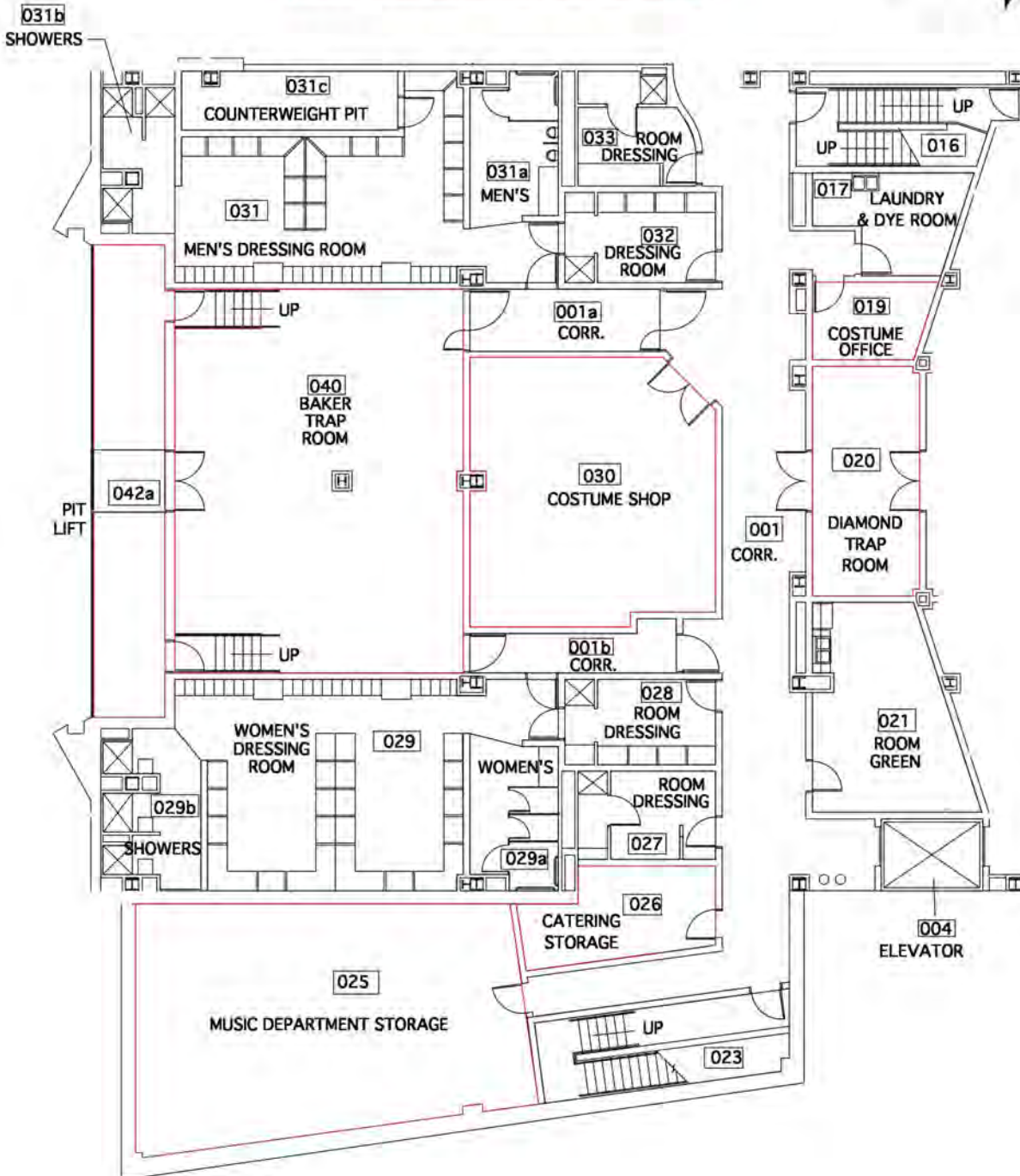
Loading Dock Detail



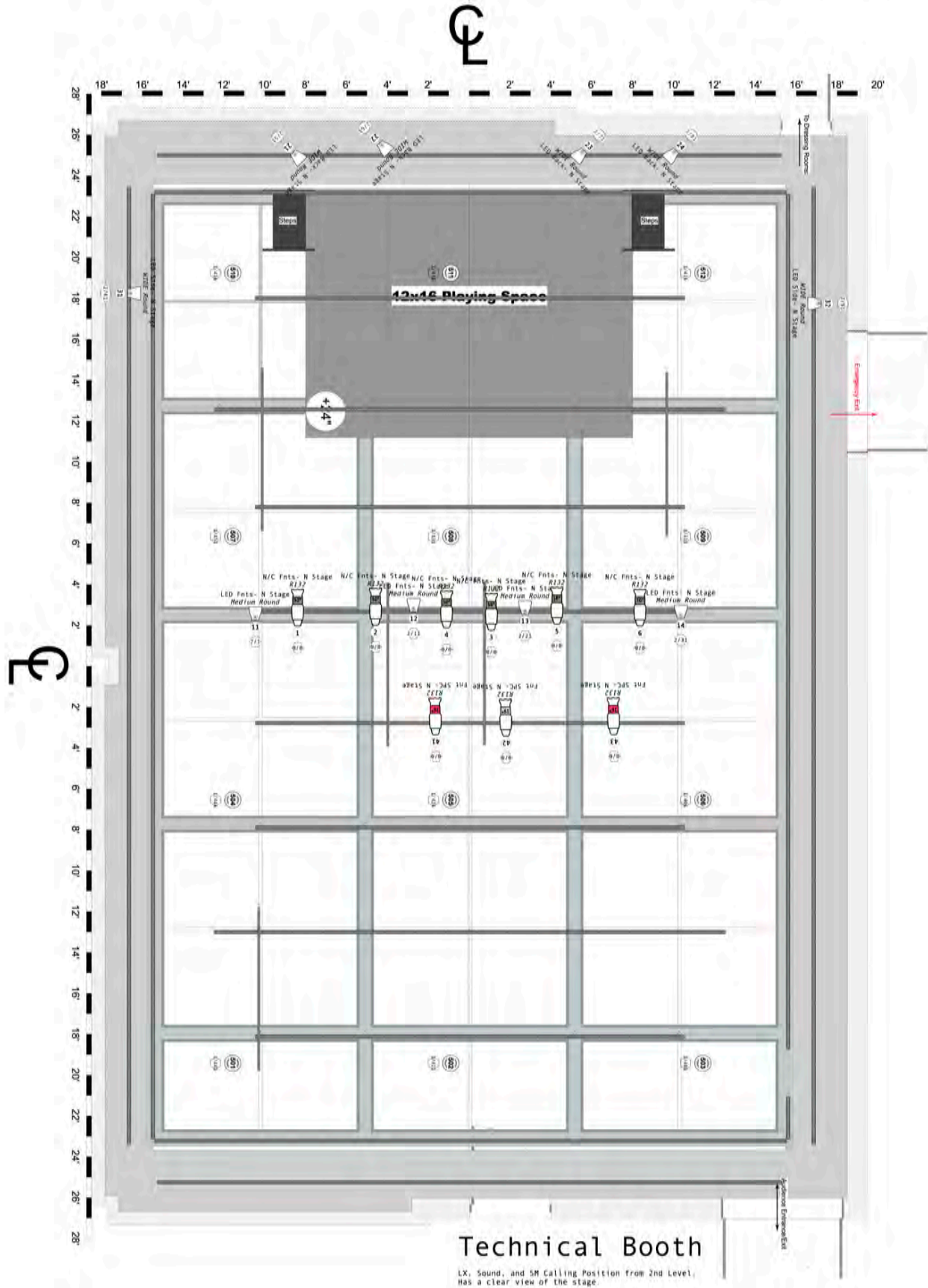
Dressing Room Layout



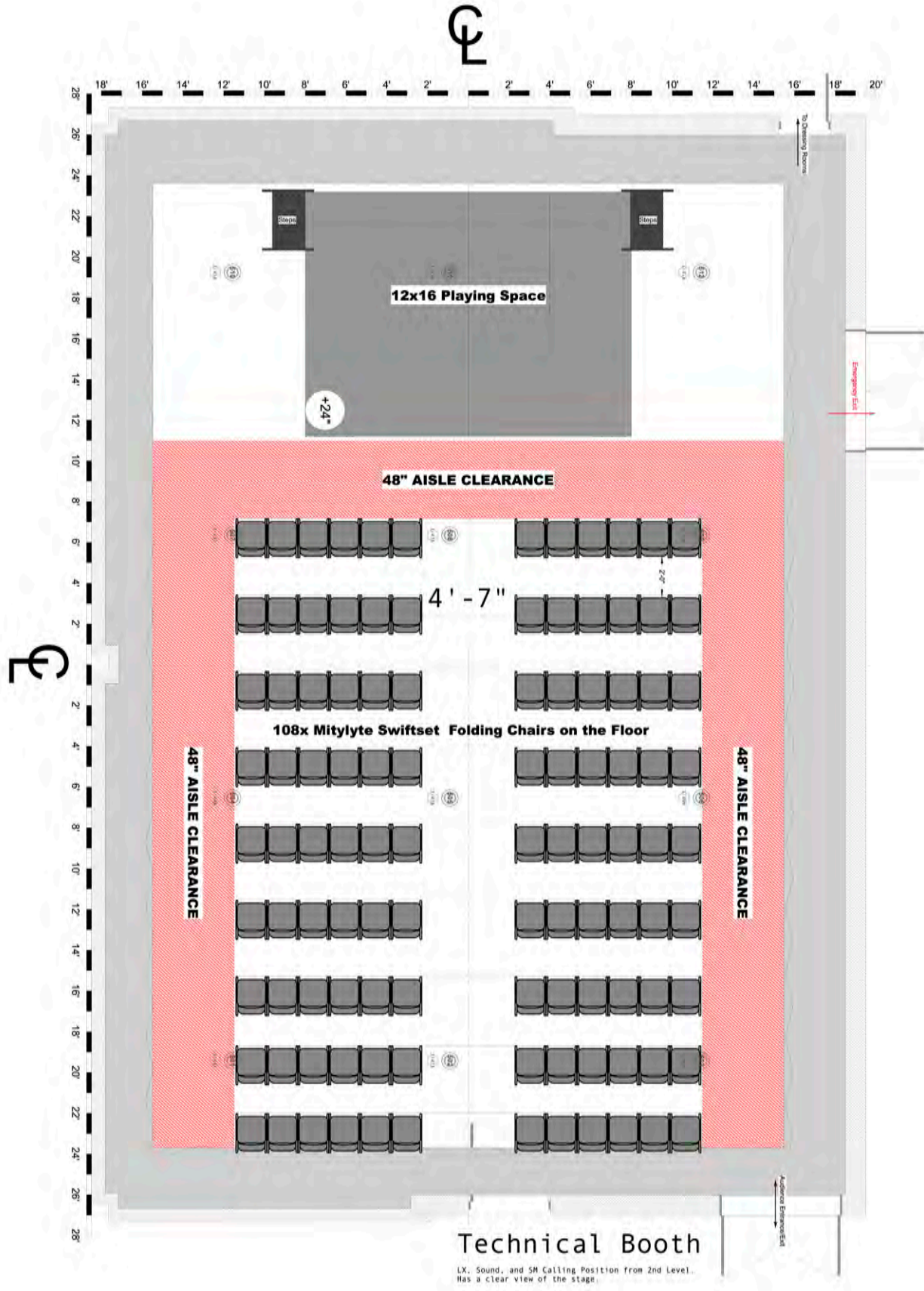
Areas Outlined In Red Are Off Limits



Fowler Black Box Rep Lighting



Fowler Black Box Seating Layout 1



Fowler Black Box Seating Layout 2

