

ZOELLNER ARTS CENTER

LEHIGH UNIVERSITY



2 0 2 4
2 0 2 5
S E A S O N
B R O C H U R E



DEAR FRIENDS,

We are at the beginning of a new arts Renaissance. There are moments when one can feel the shifting tides of change and that moment is now as people return to live performing arts. I have had many conversations about the role of the arts in bringing our diverse urban, suburban, and rural Lehigh Valley communities together through shared experiences. The 2024-2025 season will rejuvenate our spirits through world-class artists as we continue to gather.

Montreal-based Cirque Kikasse starts our Presenting Series with a unique twist, performing their production of *Santé* in front of Fritz Laboratory on our Lehigh University campus. This one-of-a-kind FREE performance, set on a food truck, will connect our campus, surrounding community, and local students in a truly memorable way (like the Strike Anywhere performance in Linderman Library last season [see photo to right]).

Our dedication to inclusivity and diversity in the arts is exemplified by our partnership with the internationally acclaimed disability arts ensemble, Kinetic Light. Their residency, a testament to our shared values, will intertwine with Touchstone Theatre's Festival Unbound, culminating in a breathtaking performance of *DESCENT*. This dance performance promises to be a powerful and moving experience, showcasing the transformative power of art and the positive impact of our partnerships.

In case you missed Marc Martel's sold-out tribute to Queen the last time, he is returning to perform his spectacular show, *One Vision of Queen*. I knew he had to come back. I could not go anywhere without people asking me to bring him back. He's back. And if you happen to be asking for a little R.E.S.P.E.C.T., join us for an electrifying tribute celebrating the music of the legendary Aretha Franklin.

With our commitment to nurturing the next generation of art enthusiasts and helping create a healthy community, we continue our Family Series partnership with Lehigh Valley Reilly Children's Hospital. Mark Saturday, September 28, on your calendar for Family Day Fest, a celebration of community partners, free activities, and music by Somos Amigos featuring Sonia de la Santos and the Grammy Award-winning band, The Okee Dokee Brothers.

Zoellner Arts Center embraces our role as a university-based presenter to transcend entertainment. Lehigh University student artists are integral to this construct as they present concerts and plays celebrating their creativity and that of the faculty that inspires them.

We strive to empower the youth of our community by curating and co-curating high-quality multidisciplinary arts programs with educators that integrate the arts into their classrooms and inspire students to create their own artwork. We remain steadfast in our commitment to foster meaningful dialogue by utilizing the arts as a lens through which we explore and celebrate our shared humanity.

With gratitude,

Mark Fitzgerald Wilson

Executive Director



Photo by Amanda Bellucci





LEHIGH STUDENTS GET FREE TICKETS



Photo by Christa Neu



CONNECT WITH US!

-  ZoellnerArts
-  zoellnerarts
-  zoellnerartscenter
-  inzactix@lehigh.edu



GO TO WEBSITE

#artshaveimpact

610.758.2787 x0
zoellnerartscenter.org

PAGE INDEX

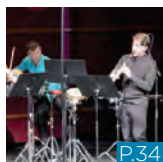
4
SEASON AT A GLANCE

7
PRESENTING SERIES

34
MUSIC DEPARTMENT

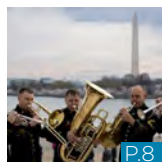
44
DEPARTMENT OF THEATRE

2024 FALL AT A GLANCE



THE TRIO SALLESE
FRI AUG 30

P.34



**THE U.S. ARMY
BRASS QUINTET**
Opener: Lehigh's
Marching 97
FRI SEP 27

P.8



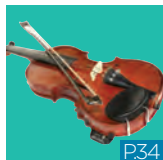
**BÉLA FLECK
& ABIGAIL
WASHBURN**
FRI OCT 18

P.14



RUMPELSTILTSKIN
SAT NOV 9
FAMILY SERIES

P.16



LUVME
The Art of Song
SAT SEP 7

P.34



FAMILY DAY
• FYÜTCH FREE
• SOMOS AMIGOS
SAT SEP 28
FAMILY SERIES

P.9



**GLENN MILLER
ORCHESTRA**
SUN OCT 20

P.15



**JAZZ REPERTORY
ORCHESTRA**
Big Band Jazz
SAT NOV 9

P.36



CIRQUE KIKASSE
Santé
WED SEP 18

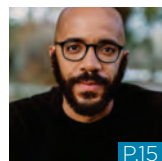
FREE

P.7



TROUBLE IN MIND
OCT 4 - 12

P.44



**NOTATIONS:
CLINT SMITH**
THU OCT 29

FREE

P.15



WOLF PLAY
NOV 15 - 22

P.44



**NOTATIONS:
LUIS MIRANDA, JR.**
THU SEP 19

FREE

P.7



KINETIC LIGHT
DESCENT
SAT OCT 5

P.10



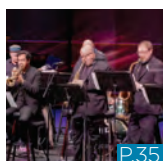
CHORAL ARTS
Great Day
FRI OCT 25
SAT OCT 26

P.35



**NEIL BERG'S
101 YEARS OF
BROADWAY**
SAT NOV 16

P.17



**HELL'S KITCHEN
FUNK ORCHESTRA**
Chesapeake
SAT SEP 21

P.35



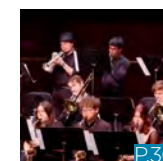
TEMPLE GRANDIN
A Conversation
SUN OCT 13

P.12



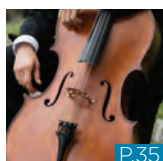
PLENA LIBRE
SAT NOV 2

P.16



**STUDENT JAZZ
CONCERT**
SUN NOV 17

P.36



**FACULTY STRING
QUARTET**
*Portrait(s) of
the Artist(s)*
SUN SEP 22

P.35



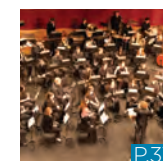
123 ANDRÉS
THU OCT 17
FAMILY SERIES

P.13



**THE PRINCETON
SINGERS**
SUN NOV 3

P.36

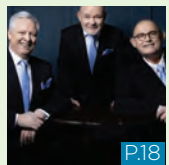


WIND ENSEMBLE
A-Rovin
SUN NOV 24

P.37

JOYful

december events



THE IRISH TENORS
A Family Christmas
SUN DEC 1

P.18



PHILHARMONIC
American Masterworks
FRI DEC 6
SAT DEC 7

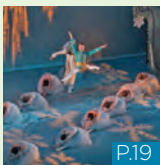
P.37



CHORAL ARTS
Christmas Vespers
SUN DEC 8

P.37

FREE



THE NUTCRACKER
SAT DEC 14
SUN DEC 15

P.19



THE KING'S SINGERS
Christmas Time is Here
FRI DEC 20

P.19



CHERISH THE LADIES
A Celtic Christmas
SUN DEC 22

P.20



LUVME
The Art of Song II: Sing Us Home
FRI JAN 31

P.38



YAMATO
The Drummers of Japan
SAT FEB 1

P.21



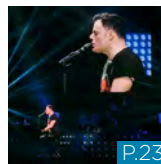
JAZZ FACULTY
Modern Works for Small Jazz Ensemble
SUN FEB 2

P.38



KINGS RETURN
FRI FEB 7

P.22



ONE VISION OF QUEEN
Featuring Marc Martel
SAT FEB 8

P.23



FIRST BIENNIAL SALERNO ART SONG RECITAL
SUN FEB 9

P.38



PHILHARMONIC
Magical Musical Tales
FRI FEB 14
SAT FEB 15

P.39



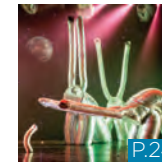
THE PRINCETON SINGERS
SUN FEB 16

P.39



PROOF
FEB 21 – MAR 1

P.45



THE ALUMINUM SHOW
SAT FEB 22
FAMILY SERIES

P.24



BELLA GAIA
Beautiful Earth
FRI FEB 28

P.25



DOLCE TREBLE CHOIR
Raise Your Voice
FRI FEB 28
LAMBERTON HALL

P.39

FREE

2025 SPRING AT A GLANCE

Spring Events: ON SALE to the general public **FRI NOV 1**
SUBSCRIBERS CAN ACCESS THE BEST SEATS NOW
AND SAVE UP TO 20%! See page 47.

We have many
FREE
performances!

Look for the **FREE** and join us!

2025 SPRING AT A GLANCE (cont'd)



JAZZ REPERTORY ORCHESTRA
The Music of Count Basie
SAT MAR 1

P.40



EARL.
Film Screening
THU MAR 27

FREE



PHARAOH'S DAUGHTER
THU APR 10

P.31



CHORAL ARTS
Questions & Comfort
FRI MAY 2
SAT MAY 3

P.43



EUGENE ALBULESCU
Faculty Recital
SUN MAR 2

P.40



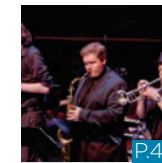
PASCUALA ILABACA Y FAUNA
FRI MAR 28

P.27



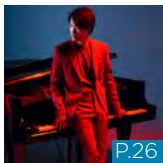
AMERICAN BRASS QUINTET
FRI APR 11

P.31



STUDENT JAZZ CONCERT
Jazz Orchestra, Ensemble, and Combos
SUN MAY 4

P.43



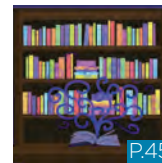
ACADEMY OF ST MARTIN IN THE FIELDS
With Bruce Liu, Pianist
FRI MAR 7

P.26



THE SOUND OF (BLACK) MUSIC
SAT MAR 29

P.28



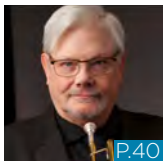
THE BOOKSTORE
APR 11 - 19

P.45



THE PAPER ESCAPER
SUN MAY 11
FAMILY SERIES

P.32



NEW YORK JAZZ REPERTORY ORCHESTRA
SAT MAR 8

P.40



MICHAL JORGENSEN, VIOLIN & STEVE BECK, PIANO
...to sleep, perchance to dream...
SUN MAR 30

P.41



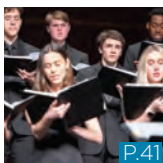
SYMPHONIC BAND
SUN APR 13
FREE

P.42



THE DOO WOP PROJECT
SAT MAY 17

P.33



CHOIR, DOLCE AND GLEE CLUB
Transformations
FRI MAR 21
SAT MAR 22

P.41



CALPULLI MEXICAN DANCE COMPANY
Puebla: the Story of Cinco de Mayo
FRI APR 4

P.28



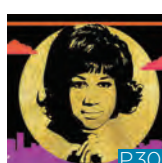
PHILHARMONIC
Concerto Marathon!
FRI APR 25
SAT APR 26

P.42



GOODNIGHT MOON & THE RUNAWAY BUNNY
SUN MAR 23
FAMILY SERIES

P.27



R.E.S.P.E.C.T.
A Celebration of the Music of Aretha Franklin®
SUN APR 6

P.30



WIND ENSEMBLE
Holst: The Planets
SUN APR 27

P.42

LEHIGH STUDENTS GET **FREE TICKETS**

PRESENTING SERIES



WED
SEP
18

CIRQUE KIKASSE *SANTÉ*

FREE OUTDOOR PERFORMANCE - Public Welcome

Location: Lehigh University Fritz Laboratory
Parking Lot, 13 E. Packer Ave.

10:00AM
12:30PM

FREE

Montreal-based Cirque Kikasse's production of *Santé* is set to connect our campus, community and local school children for a free outdoor performance. Cirque Kikasse brings thrills and chills with a dynamic circus show featuring extreme acrobatics and breathtaking balances all on an extraordinary food truck. From arranging furniture that turns into a tower 30 feet off the ground, to playfully, inefficiently cleaning the truck and trampoline, to overflowing the popcorn machine, this seasoned troupe is a mouth-watering *tour de force* of fun. Join us to 'order up' the beginning of the 2024-2025 Presenting Series season!

NOTATIONS

THU
SEP
19

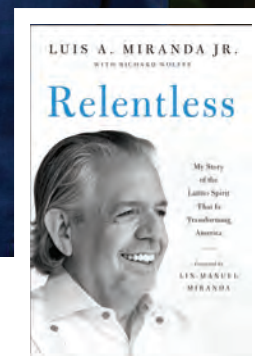
LUIS MIRANDA, JR.

Notations are **FREE** events; No tickets required.

11:00AM

FREE

A veteran of New York and national politics, Luis Miranda embodies the relentless spirit of progress of American immigrants. In *Relentless*, he shares a fascinating narrative of his life and career—from his early days as a radically minded Puerto Rican activist to his decades of political advice and problem-solving. Miranda recounts the thrill of the ascendancy of *Hamilton*, created by his son Lin-Manuel, and he details the suffering after the devastation of Puerto Rico by Hurricane Maria. Amid the triumphs and challenges, Miranda examines what his experience reveals about our ever-changing politics, demographics and society.



FRI
SEP
27

7:30PM

FREE

THE U.S. ARMY BRASS QUINTET

GENERATIONS

Since its inception in 1972, The U.S. Army Brass Quintet has gained a reputation as one of the most respected and sought-after groups in the military. The ensemble's entertaining style and varied repertoire have dazzled audiences and dignitaries in 48 states and 15 foreign countries. Affectionately known as the B5, the quintet performs regularly at significant national events and ceremonies throughout the nation's capital, such as at the White House, presidential inaugurations, and official state ceremonies. The group's repertoire includes over 500 selections from all eras and genres of classical and popular music, interactive entertainment, videos, and works for children's concerts. They have performed on numerous programs, including NBC's *Today Show*, NPR's *A Prairie Home Companion*, CBS's *Sunday Morning*, Fox, and internationally on BBC.

FREE; No Tickets Required

OPENER (6:30PM): Don't miss the talented student musicians in **Lehigh University's Marching 97** as they kick off the evening with a free performance in the center's Tamerler Courtyard. Go Mountain Hawks!



SAT
SEP
28

Family DaY

 **Lehigh Valley
Reilly Children's Hospital**
FAMILY SERIES

Join us for our Family Day Fest **FREE**
from 9:30 to 2:30pm!

We invite you to explore Zoellner's building and experience a fun day filled with art activities, treats and even a **birthday party for our Zoellner Zebra!** Did someone say cake? Stop by and visit our community partners: PBS, Just Born, Crayola, and many more. Check our website as the day gets closer for more details.



FYÜTCH 10AM & 1:30PM **FREE**

Fyütch is an award-winning music artist, songwriter, producer and member of the Grammy-nominated group 1 Tribe Collective. He celebrates the rich culture and diversity that Black voices bring to family music and inspire listeners to make a difference. Fyütch engages with audiences in a positive, meaningful way that leaves a lasting impression.

FREE; FOWLER BLACK BOX THEATRE

Run Time: 60 min. approx.
(no intermission)

**SONIA DE LOS SANTOS &
THE OKEE DOKEE BROTHERS** 12PM
SOMOS AMIGOS: SONGS ON COMMON GROUND

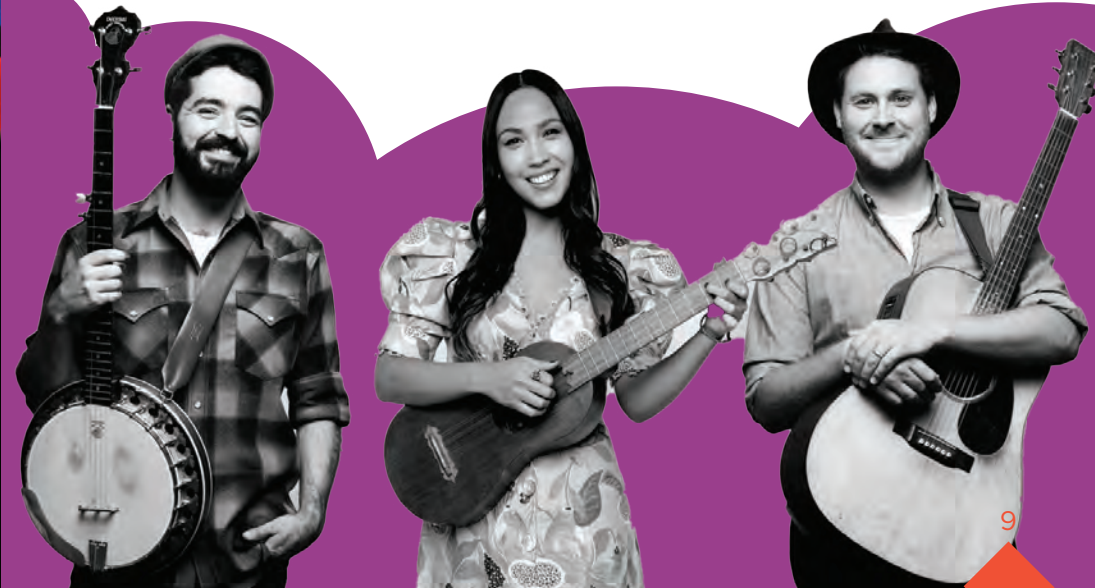
Friendship is at the heart of this joyful collaboration between Mexican songstress, Sonia De Los Santos, and the Americana folk duo, The Okee Dokee Brothers. This bilingual program includes both old and new songs that span the musical traditions of North America and illustrate the collective power of singing together and learning from each other. With an adventurous spirit and a common vision of peace and understanding, Somos Amigos encourages young and old to explore, dance, sing and laugh together, hand-in-hand.

Price \$15 | Child \$10

GENERAL ADMISSION

Run Time: 60 min. approx. (no intermission)

zoellnerartscenter.org



SAT
OCT
5

7:30PM

KINETIC LIGHT

DESCENT

Kinetic Light, an innovative disability arts ensemble, is globally acclaimed for its immersive, accessible approach. Led by disabled artists, the ensemble creates, designs, and performs work that is a thrilling blend of movement, light and sound. Their creations speak to and emerge from disability aesthetics and culture. This connection to the rich traditions and contemporary conversations of disabled artists in all artistic fields makes Kinetic Light's work a powerful, intersectional creative force.

Price \$35

GENERAL ADMISSION

Image description: Kneeling, Laurel Lawson leans back into the underside of her chair, arms outstretched and open in a wide V. Blue light washes the stage, a moment of breath and surrender. Laurel is a white person with pale skin and teal cropped hair. She appears small amongst the expanse of ramp, sky, and the large projection of a reclining spirit figure in the sky; another wheelchair balances at the ramp's peak. Photo Jaqlin Medlock / Rutgers University.



Image description: As the sky transitions from gold to amber to red, green and blue, Alice Sheppard, a multiracial Black woman, slides in a spider position on her stomach down the shiny ramp. The shadow of her wheelchair is visible beneath; her curly hair glows. Photo Chris Cameron/MANCC.

DESCENT explores the pleasures of wheeled movement and reckless abandon. It is performed on a custom-designed architectural ramp installation with hills, curves, and peaks. Combining dance, architecture, design, and technology, this work challenges cultural assumptions of what disability, dance and beauty can be. Inspired by the sensual writings and art of French sculptor Auguste Rodin, *DESCENT* gives the mythological characters of Venus and Andromeda new life as interracial lovers. Voted as 2018's most moving performance by the readers of *Dance Magazine*, *DESCENT* is "An ingenious set of ramps [that] serves as a canvas for projections of stars and seas, and as a surface for wheelchair motion with the gliding grace of ice dance," according to *The New Yorker*.



Per Kinetic Light's touring practices, **masks are required for this performance**. For the safety of the performing artists and audience, all audience members, ushers, and staff are required to be masked upon entering the venue and throughout the performance.

Access: This performance is expected to include haptic interpretation of sound scores; ASL interpreters; audio description through Kinetic Light's Audimance app; expanded accessible seating; tactile lobby experiences; sensory kits; a quiet space; and exit and entry welcome during performances. Please call the box office at 610-758-2787 x0 for ASL and haptic seating.

Kinetic Light's *DESCENT* is presented in partnership with Touchstone Theatre and their community arts initiative Festival UnBound, OCT 3-6.



To register for a workshop, (masks required) [visit touchstone.org/festival-unbound](https://www.touchstone.org/festival-unbound) or [scan the QR code](#).

Integrated Dance Workshop Level 1

WED OCT 2
Location: DeSales University

All welcome, no prior experience needed

Dance *DESCENT*

WED OCT 2
Location: DeSales University

Experienced non-disabled and disabled dancers

Inside Disability Arts + *DESCENT*

SUN OCT 6
Location: Zoellner Arts Center

Kinetic Light's Artistic Director Alice Sheppard opens up about the world of *DESCENT*: sharing choreographic and access practice, plus behind-the-scenes artistic info. Space is limited.

[Register at www.touchstone.org/festival-unbound/](https://www.touchstone.org/festival-unbound/)



SUN
OCT
13

TEMPLE GRANDIN
A CONVERSATION

4:00PM

Dr. Grandin, who didn't speak until she was three and a half, was fortunate to receive early speech therapy, learn social skills like turn-taking in board games, and be mainstreamed into kindergarten at five. Her first book, *Emergence: Labeled Autistic*, offered a unique first-person view of autism. In his best-selling *Anthropologist on Mars*, Oliver Sacks wrote that Grandin's book was unprecedented because there had never been an inside narrative of autism.

Now a professor at Colorado State University, she's renowned for her work in animal behavior and welfare, consulting globally, and appearances on television (NPR, BBC and other prominent media). In 2010, **Time** named her one of **"The 100 Most Influential People in the World."** She was honored with an Emmy-winning HBO movie and induction into the American Academy of Arts and Sciences in 2016. The award-winning autism self-advocate shares her message about the disorder and "differently-abled" brains.

Price \$39



**“A rockstar
for little
language
learners”**

- Billboard

**THU
OCT
17**

12:30^{PM}

123 ANDRÉS *AROUND THE AMERICAS*

Christina and Andrés are 123 Andrés, the GRAMMY and Latin Grammy-winning duo for kids and families known for their interactive, high-energy shows. They bring fresh original songs that blend Spanish and English, with an eclectic mix of sounds from all corners of Latin America. They can't find their friend Juana, and their only clue is that she's somewhere in the Americas. Join them as they search the continents and learn about geography and music along the way. The audience is a key part in this rich journey brought to the stage with colorful, exciting visuals. 123 Andrés pack their show with positive vibes and energetic songs that get the whole family dancing and learning.

Price \$5
GENERAL ADMISSION

*Run Time: 60 min. approx.
(no intermission)*

 **Lehigh Valley
Reilly Children's Hospital**
FAMILY SERIES



FRI
OCT
18

7:30PM

BÉLA FLECK & ABIGAIL WASHBURN

Béla Fleck & Abigail Washburn, “the king and queen of the banjo” (*Paste Magazine*), have a musical partnership like no other. Béla Fleck is a 15-time Grammy Award winner who has taken the instrument across multiple genres, and Abigail Washburn a singer-songwriter and clawhammer banjo player who re-radicalized it by combining it with Far East culture and sounds. The two met at a square dance, began collaborating musically, and eventually fell in love. Over the years, they played together most visibly in the Sparrow Quartet alongside Ben Sollee and Casey Driessen and informally at a pickin’ party here, a benefit there, or occasionally popping up in each other’s solo shows. Fans of tradition-tweaking acoustic fare eagerly anticipated that Béla & Abigail would begin making music together as a duo. Whether at home, on stage, or on record, their deep bond, combined with the way their distinct musical personalities and banjo styles interact, makes theirs a picking partnership unlike any other on the planet.

Price \$45/\$35

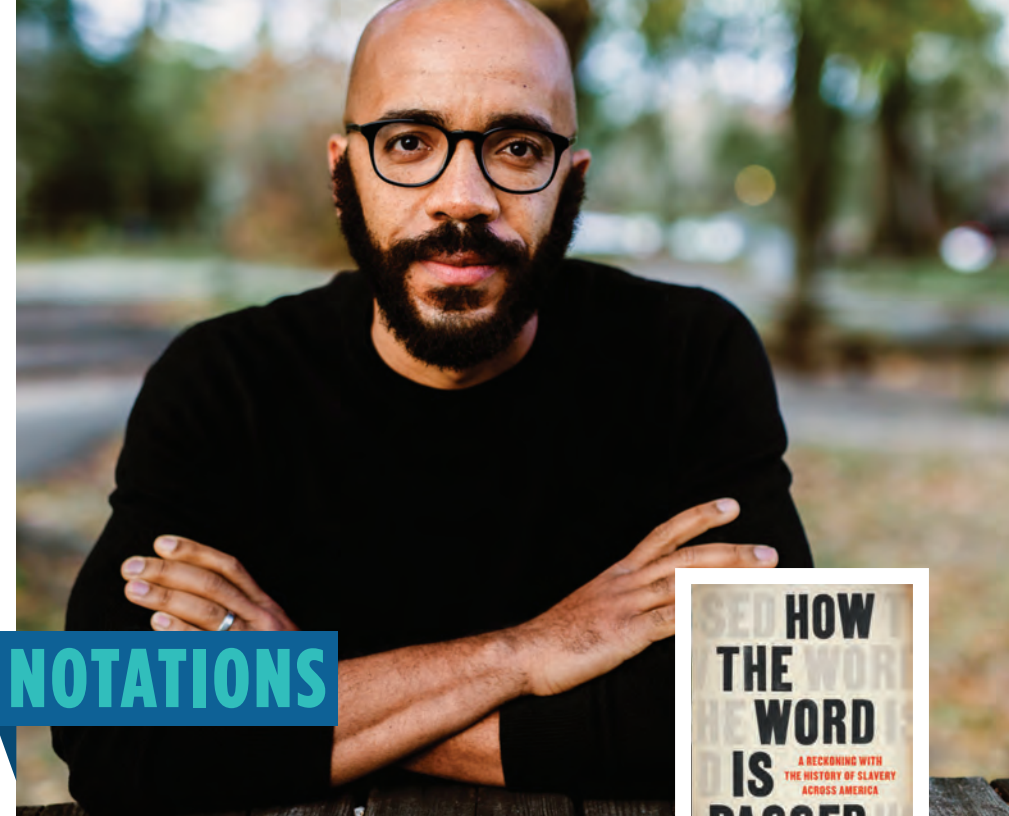


**SUN
OCT
20**
4:00PM

**THE WORLD FAMOUS
GLENN MILLER ORCHESTRA**

Nobody put more Americans “In the Mood” for great swing music than Glenn Miller, leader of the most famous big band of all time. The Miller sound lives on through performances by the Glenn Miller Orchestra, performing the classic 1930s and 40s tunes *Moonlight Serenade*, *A String of Pearls*, and more that made the Greatest Generation swing. It is more than 80 years since Glenn Miller first succeeded with the Orchestra. Except for a few years following his disappearance in WWII, his orchestra and music have been continuously heard worldwide since 1938.

Price \$35



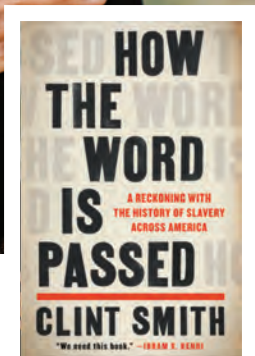
NOTATIONS

**TUE
OCT
29**
7:00PM

CLINT SMITH

Notations are **FREE** events; No tickets required.

Clint Smith is the #1 *New York Times* bestselling author of *How the Word Is Passed: A Reckoning With the History of Slavery Across America*, winner of the National Book Critics Circle Award for Nonfiction, the Hillman Prize for Book Journalism, the Stowe Prize, the Dayton Literary Peace Prize, and selected by *The New York Times* as one of the 10 Best Books of 2021. He is also the author of two books of poetry, *The New York Times* bestselling collection *Above Ground* as well as *Counting Descent*. Both poetry collections were winners of the Literary Award for Best Poetry Book from the Black Caucus of the American Library Association and both were finalists for NAACP Image Awards. He is a staff writer at *The Atlantic*.





**SAT
NOV
2**

7:30PM

PLENA LIBRE

The trailblazing Latin Grammy-nominated Plena Libre has thrilled international audiences for nearly three decades with its contemporary, high-energy, dance-infused concerts. Masters of the traditional Puerto Rican plena and bomba styles, Plena Libre fuses well-loved traditions with modern Afro-Caribbean influences, putting a new and always electrifying spin on this scintillating music. With mesmerizing hand drumming, raucous horns, and soaring three-part vocal harmonies, this band always brings the heat. “They can rock the house with traditional singing and drumming, then turn around and lay down a smoking, jazz-heavy, Afro-Rican jam.” — *East Bay Express*

Price \$25



**SAT
NOV
9**

11:00AM

RUMPELSTILTSKIN

The internationally known Panto Company presents an age-old tale of greed about a young girl who is said to spin straw into gold, the greedy king who locks her up until she does, and the strange magical little man Rumpelstiltskin who appears and promises to spin the straw in return for her jewelry. The journey continues through many adventures, twists, and turns that make this unforgettable story so exciting. This classic tale comes to the stage filled with song and audience participation, along with fabulous sets and costumes!

Price \$15 | Child \$10
GENERAL ADMISSION

*Run Time: 60 min. approx.
(no intermission)*

 **Lehigh Valley
Reilly Children's Hospital**
FAMILY SERIES



Neil Berg's 101 YEARS OF BROADWAY



**SAT
NOV
16**

7:30PM

Back by popular demand, *101 Years of Broadway* recreates the greatest moments from the finest shows of the century featuring the actual stars of shows such as *The Phantom of the Opera*, *Les Miserables*, *CATS*, *Jesus Christ Superstar* and *Jekyll & Hyde*. These amazing performers light up the stage with songs from the hit shows in which they starred. Neil Berg presents brilliantly revived arrangements of Broadway classics and thrilling numbers from Broadway's newest hit shows.

Price \$45/\$35





THE IRISH TENORS

A FAMILY CHRISTMAS WITH ORCHESTRA

SUN
DEC
1

4:00PM

The Irish Tenors — Anthony Kearns, Declan Kelly and Ronan Tynan — are synonymous with Irish music. They have performed all over the world and have blazed a trail from coast to coast in America, stopping in nearly every city, including the best venues from Radio City Music Hall, Madison Square Garden and Carnegie Hall in New York to The Hollywood Bowl in California, thrilling audiences at every single stop with their enchanting Irish repertoire. Join these kings of Celtic music as they perform with a live orchestra. Just a few of many Tenors' beloved hits include *Danny Boy*, *Whiskey in the Jar*, *Fields of Athenry*, *My Heart Will Go On*, *Fairytale of New York* and *South of The Border*. With 10 best-selling CDs to their credit, they share company with the likes of The Three Tenors and Andrea Bocelli as among the most successful acts in PBS history.

Price \$59/\$49/\$39



share the season's

J



SAT
DEC
14

THE NUTCRACKER

The Pennsylvania Youth Ballet's magical production of *The Nutcracker* with a live orchestra playing Tchaikovsky's masterpiece is a holiday tradition for the whole family! Enjoy the beauty of dancing snowflakes, the Sugar Plum Fairy, and Clara's dream come to life, with guest artists from the world's finest ballet companies and a cast of nearly 100 dancers.

Price \$59/\$49/\$35

SUN
DEC
15

12:00PM
4:00PM

FRI
DEC
20

THE KING'S SINGERS

CHRISTMAS TIME IS HERE

Since 1968, The King's Singers have been the epitome of excellence in a *cappella* singing, gracing the world's most prestigious stages. Their extensive discography has led to numerous awards including two Grammy Awards, an Emmy Award, and a place in *Gramophone* magazine's inaugural Hall of Fame. The group formed when six choral scholars from King's College, Cambridge, gave a concert at London's Queen Elizabeth Hall. By chance, the group was made up of two counter-tenors, a tenor, two baritones, and a bass, and it has maintained this formation ever since that debut. Wrap up warm for an extra-special holiday concert as they perform music from their travels across the world and remember their spiritual home in England.

Price \$55/\$45/\$35



SUN
DEC
22

4:00PM



“It is simply impossible to imagine an audience that wouldn’t enjoy what they do,” says *The Boston Globe* speaking of Cherish the Ladies, the Grammy-nominated, Irish-American super group that formed in New York City in 1985 to celebrate the rise of extraordinary women in what had been a male-dominated Irish music scene. Since their first sold-out concert, they exploded onto the Irish music circuit, performing thousands of concerts around the globe, and are now among the busiest and most admired Irish groups on the planet. Their show is a wonderful blend of the old and the new. Irish songs, lively jigs and reels, and heart-wrenching slow airs transport the listener on an enchanted musical journey. Our audience asked us to bring them back, and we have!

Price \$49/\$39





2025 EVENTS

Tickets on sale **FRI NOV 1**

Check out page 47 to
SUBSCRIBE + SAVE!

SAT
FEB
1

7:30PM

YAMATO THE DRUMMERS OF JAPAN *HITO NO CHIKARA: THE POWER OF HUMAN STRENGTH*

YAMATO's Taiko drumming is a unique blend of rhythm, movement, and energy that must be experienced to be fully understood. On stage, they stand with more than 40 Taiko drums, all of which have different characters. For example, their largest drum, *Odaiko*, was produced from a massive tree over 400 years old. They do not simply make their Taiko drums explode with sound; they produce delicate music that provides the listener with a palette of meticulously crafted sound. YAMATO's performances are known as physical music — sometimes intense, sad, comforting, yet in the next moment comical. They have performed over 4,000 shows in 54 countries.

Price \$55/\$45/\$35



FRI
FEB
7

KINGS RETURN

7:30PM

Kings Return is a vocal band of brothers: Gabe Kunda, Vaughn Faison, J.E. McKissic and Jamall Williams. The Dallas-based *a cappella* group was formed unintentionally in 2016 after first singing together for Gabe's college graduation recital. Their popularity grew when they began posting videos to social media from the stairwell where they rehearsed. Their sound has earned comparisons to iconic acts like Take 6 and Boyz II Men. They have amassed almost 10 million views across all platforms and have been recognized by artists and brands such as Emily King, Anita Baker, Anthony Anderson, Joyce DiDonato, Apple, NPR, *Dallas Morning News* and so many more. Avoiding the confines of a single genre, Kings Return's sound is proudly born out of gospel, jazz, R&B/soul and classical music. "The name Kings Return is a reflection of ourselves. We are Kings who go forth to conquer but most importantly we return to give back to our community."

Price \$25



SAT
FEB
8

7:30PM

We Will Rock You, *Crazy Little Thing Called Love*, *We Are the Champions*, and the legendary *Bohemian Rhapsody* are songs that scratch the surface of rock supergroup Queen's legacy. There was only one Freddie Mercury. His unique vocals have made it nearly impossible to perform his music as he did. Finally, Marc Martel and One Vision of Queen perform Freddie's music as it should be. Legendary Queen drummer Roger Taylor remarked to the *Daily Record*: "That voice. You listen, close your eyes, and you think it's Freddie. It's really uncanny." You may have heard Marc when he last performed at Zoellner to standing ovations or his vocals that were part of Rami Malek's Academy Award-winning performance in *Bohemian Rhapsody*, the highly acclaimed Queen biopic.

Price \$59/\$49





SAT
FEB
22
4:00PM

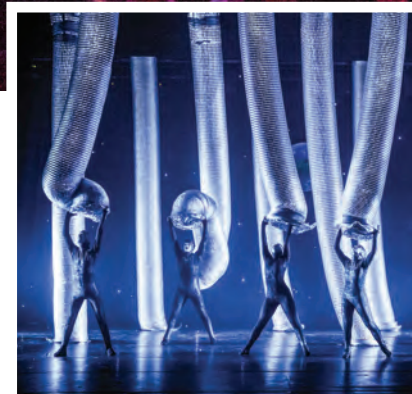
THE ALUMINUM SHOW

A unique and energetic experience for the entire family, this stimulating *tour de force* combines movement, dance, visual theatre, and plenty of humor. In the show, talented dancers and actors breathe life into aluminum-made industrial materials while telling the story of an astronaut on a mission in a bizarre metallic world. While traveling through this futuristic world ruled by technology, he finds adventure, excitement, and even friends, who do everything it takes to get him back home in one piece.

Price \$28 | Child \$20
GENERAL ADMISSION

Run Time: 60 min. approx.
(no intermission)

 **Lehigh Valley
Reilly Children's Hospital**
FAMILY SERIES





FRI
FEB
28

7:30PM

BELLA GAIA

BEAUTIFUL EARTH

Bella Gaia is a revolutionary NASA-powered immersive experience. Inspired by astronauts' life-changing views of Earth from space, this live concert seamlessly integrates music, dance, technology, and NASA imagery, turning the stage into a planetary spectacle. Combining supercomputer data visualizations, orbital views, and live performances, Bella Gaia creates a sublime and "Out of This World" experience. This award-winning production explores the interconnectedness of humanity and the Living Universe, celebrating cultural evolution and addressing the impact of the Anthropogenic Age. Crafted by director-composer Kenji Williams, Bella Gaia authentically replicates the transformative Overview Effect*, providing audiences with an emotionally charged perspective on Earth. This neuroscience-driven experience evokes a profound response, instilling a reason to care for our fragile planet.

Price \$35/\$25

***A cognitive shift while viewing the Earth from space.**



zoellnerartscenter.org



FRI
MAR
7

ACADEMY OF ST MARTIN IN THE FIELDS

WITH BRUCE LIU, PIANIST

7:30PM

The Academy of St Martin in the Fields (ASMF) is one of the world's finest chamber orchestras, renowned for fresh, brilliant interpretations of the world's greatest orchestral music. Formed by Sir Neville Marriner in 1958 from a group of leading London musicians, the ASMF gave its first performance in its namesake church in November 1959. Through unrivaled live performances and a vast recording output — highlights of which include the 1969 best-seller Vivaldi's *Four Seasons* and the soundtrack to the Oscar-winning film *Amadeus* — the orchestra gained an enviable international reputation for its distinctive, polished and refined sound.

Repertoire:
COPLAND *Quiet City*; MOZART Piano Concerto No. 9;
ADAMS *Shaker Loops*; HAYDN Symphony No. 29.

Price \$55/\$45/\$35

Programs Subject to Change



First prize winner
of the 18th Chopin Piano
Competition 2021 in Warsaw,
Bruce Liu's "playing of breathtaking
beauty" (*BBC Music Magazine*) has secured
his reputation as one of the most exciting
talents of his generation and contributed
to a "rock-star status in the classical music
world" (*The Globe and Mail*).



**SUN
MAR
23**

GOODNIGHT MOON & THE RUNAWAY BUNNY

4:00PM

Adapted from Margaret Wise Brown's 60-year-old classic children's book, *Goodnight Moon* celebrates familiar nighttime rituals, while *The Runaway Bunny's* pretend tale of leaving home evokes reassuring responses from his loving mother. Both stories feature endearing animal puppets, stunning scenic effects, and evocative music that have earned international recognition for Mermaid Theatre of Nova Scotia. The hour-long staged adaptation brings a fresh appreciation of the stories and images that have delighted several generations.

Price \$15 | Child \$10
GENERAL ADMISSION

*Run Time: 60 min. approx.
(no intermission)*



**FRI
MAR
28**

PASCUALA ILABACA Y FAUNA

7:30PM

Accordion-wielding Chilean songstress Pascuala Ilabaca is a true hidden gem in Latin American and World Music genres. A favorite on the new scene of young Chilean singer-songwriters, her music is rooted in traditional sounds but effortlessly integrates shades of jazz, pop, and rock and influences gathered in such distant places as India or Mexico. Accompanied by her formidable band Fauna, her unique stage presence conjures sweetness and empowerment simultaneously, setting her songs alive with both fragility and verve.

Price \$25



SAT
MAR
29

7:30PM

THE SOUND OF (BLACK) MUSIC

Gospel, funk, soul, and Afrobeat come together in this joyful presentation of Rodgers and Hammerstein songs as viewed through a utopian, afrofuturistic lens. *The Sound of (Black) Music* is a vibrant one-act concert reimagining of the classic musical, featuring songs such as *Do-Re-Mi*, *Edelweiss* and *Climb Ev'ry Mountain*, all recast through a Black Roots music kaleidoscope. The concert channels the singular musical gifts of some of today's most talented Black musicians into an overflowing celebration of Black Roots music. Vocalists Charles Anthony Bryant, Brianna Thomas, Charenee Wade, Alexis Lombre, and Zhanna Reed are supported by an electrifying band, bringing to life a vibrant retelling of the beloved classic — one fit for the whole family!

Price \$35/\$25

inzactix@lehigh.edu



FRI
APR
4

7:30PM



CALPULLI
MEXICAN DANCE COMPANY

PUEBLA: THE STORY OF CINCO DE MAYO



It's an underdog story with impossible odds. In 1862, a small group of soldiers in Puebla, Mexico, banded together with everyday citizens to defeat the French army, the strongest military force of the time. Through folkloric and contemporary dance and live music, Calpulli Mexican Dance Company explores this unexpected victory from the now-famous date of May 5. Creating a "colorful land of music and dance," (*The New York Times*) this show celebrates the culture and people of Puebla while revealing the true meaning behind Cinco de Mayo.

Price \$45/\$35



Lehigh University Art Galleries

Gain a New Perspective

FREE & OPEN to All!

Lehigh University Art Galleries (LUAG) is Lehigh's FREE on-campus art museum, caring for a permanent collection of over 19,000 works of art from diverse cultures and time periods, including over 50 outdoor sculptures. LUAG presents a variety of exhibitions and free public programs annually for individuals of all ages and abilities. Join us for lectures and symposia to hands-on artmaking and student-led workshops that foster meaningful encounters with art and ideas. We are committed to making the collection and exhibitions inclusive and accessible, both in-person and online.

For more information on current exhibitions and programming visit www.luag.org.

To stay updated on the latest LUAG news follow us on social media @LUArtGalleries.

R.E.S.P.E.C.T.



SUN
APR
6
7:00PM

A CELEBRATION OF THE MUSIC OF ARETHA FRANKLIN®

R.E.S.P.E.C.T. is an electrifying tribute celebrating the music of the legendary Aretha Franklin. This concert experience takes audiences on a journey of love, tragedy, courage and triumph. Starring a live band and supreme vocalists, come experience a night of music by one of the greatest artists of all time. The concert features all your favorite hits in one evening, including *Natural Woman*, *Think*, *I Knew You Were Waiting for Me*, *Chain of Fools*, *Respect* and many more. You'll be out of your seat and dancing in the aisles as you lose yourself in the music that inspired a generation.

Price \$59/\$49/\$39



*Aretha Franklin® is a registered trademark of The Estate of Aretha Franklin.



THU
APR
10

7:30PM

PHARAOH'S DAUGHTER

Pharaoh's Daughter, led by singer-musician Basya Schechter, fuses psychedelic and pan-Mediterranean influences in their music. Their repertoire features a blend of Hasidic chants, Mizrahi and Sephardi folk-rock, and spiritual elements, accompanied by percussion, flute, strings and electronica. Schechter's global sound stems from her Hasidic music background and travels to the Middle East, Africa, Turkey, Kurdistan and Greece. Having studied ethnomusicology extensively and collaborated with folk musicians worldwide, Schechter has honed the group's diverse style. They have performed in venues across America and Europe, including Central Park's Summer Stage series, Lincoln Center's Damrosch Park, and Queen Elizabeth Hall in London.

Co-presented by the Philip and Muriel Berman Center for Jewish Studies, in honor of its 40th anniversary.

Price \$10

GENERAL ADMISSION



FRI
APR
11

7:30PM

AMERICAN BRASS QUINTET

The American Brass Quintet is internationally recognized as one of the era's premier chamber music ensembles. Since its founding in 1960, the American Brass Quintet has performed on five continents, made nearly 60 recordings and premiered more than 150 contemporary works for brass.

Committed to the development of brass chamber music through higher education, the quintet has served as Ensemble-in-Residence at The Juilliard School since 1987 and at the Aspen Music Festival since 1970.

Price \$35/\$25

SUN
MAY
11

4:00PM

THE PAPER ESCAPER

What happens when a book character won't stay in their place? At first, the world of *The Paper Escaper* exists only in white, blacks and greys. But then, the Illustrator reveals a vividly colored pop-up book and Benny, the book's newest character. Benny, our plucky puppet protagonist, is eager to explore the world beyond their page. But when the Illustrator keeps trying to make Benny stay put, Benny will need the help of a surprising new friend to evade the Illustrator's traps of glue and tape. As the zany game of cat-and-mouse escalates, a wily fire threatens to break out of control and consume the whole workroom. Benny can't fight it all on their own — what will they do?

This puppetry play that uses no dialogue lets the striking visuals, dynamic original music, and cartoon-like sound effects tell a story of determination, friendship, and the power of following your own path.

Price \$10 | Child \$8

GENERAL ADMISSION

Run Time: 60 min. approx.
(no intermission)





The Doo Wop Project

SAT
MAY
17

7:30PM

The Doo Wop Project begins at the beginning: tracing the evolution of Doo Wop from the classic sound of five guys singing harmonies on a street corner to the biggest hits on the radio today. In their epic shows, The Doo Wop Project takes audiences on a journey featuring foundational tunes from the Crests, Belmonts and Flamingos through the vocal artistry of Smokey Robinson, The Temptations, and The Four Seasons all the way to DooWopified versions of modern hits from Michael Jackson, Jason Mraz, Maroon 5 and Sam Smith.

Featuring stars from the Broadway hits *Jersey Boys*, *Motown: The Musical*, and *A Bronx Tale*, The Doo Wop Project brings unparalleled authenticity of sound and vocal excellence to recreate—and in some cases entirely reimagine—the greatest music in American pop and rock history.

Price \$45/\$35

AUGUST

FRI
30

THE TRIO SALLESE

7:30PM

Domenic Salerni, violin (Attacca Quartet), Antonello Di Matteo, clarinet (Philadelphia Ballet principal), Miles Salerni, percussion (Philadelphia Ballet principal). Music by Verdi, Salerni, Sametz and more.

Price \$10



SEPTEMBER

SAT
7

LUVME

*THE ART OF SONG:
REMEMBERING DAVID DEL TREDICI*

7:30PM

This season, LUVME's theme is "the song." The ensemble's first concert features the music of David Del Tredici, the late Pulitzer Prize-winning composer, and music from his former students, including Mason Bates, Tamar Muscal, and Whitney George. The performance is prefaced by a documentary on Del Tredici's life. Its director, Daniel Bellavsky, joins us to discuss the film and answer questions. For those wishing to attend both, check the website for details about a dinner option between the film and the concert. Darin Lewis, director.

Price \$10



LEHIGH UNIVERSITY MUSIC DEPARTMENT

Programs Subject to Change

To instill a love for music, to foster the discipline it requires, to promote musical literacy and to develop creativity.

SAT
21

HELL'S KITCHEN FUNK ORCHESTRA

CHESAPEAKE

8:00PM

Bill Warfield and the Hell's Kitchen Funk Orchestra perform music from their new Planet Arts release *Chesapeake*. *Chesapeake* is a tone poem dedicated to the Chesapeake Bay and the Eastern Shore way of life. Bill Warfield, director.

Price \$18



SUN
22

FACULTY STRING QUARTET

PORTRAIT(S) OF THE ARTIST(S)

3:00PM

The Lehigh University Faculty String Quartet presents a program full of beauty, charm, and resilience. William Grant Still's musical portraits of his friends, the Lyric Quartet, are featured along with the quirky 1st Quartet by Erwin Schulhoff and Shostakovich's dramatically poetic and triumphant 2nd Quartet.

Price \$15



OCTOBER

FRI
25

CHORAL ARTS

GREAT DAY

8:00PM

Lehigh University Choral Arts presents songs of celebration, contemplation, and daily life, featuring Bach's *Magnificat* and *Illuminare* by Elaine Hagenberg. Guest singers from Quakertown Community High School, Erin Camburn, director. Sun Min Lee, guest conductor; Sarah Frook Gallo, director; Liz Olson, associate director.

Price \$18

SAT
26

8:00PM



NOVEMBER

SUN
3

THE PRINCETON SINGERS

4:00PM

The Princeton Singers is dedicated to producing high-quality choral performances of all cultures and periods, advocates for contemporary composers, and aims to share the joy of music with diverse audiences worldwide. Steven Sametz, artistic director.

Price \$18



SAT
9

JAZZ REPERTORY ORCHESTRA

BIG BAND JAZZ

8:00PM

The Lehigh University Jazz Repertory Orchestra performs music from the Big Bands of the 40s to the Jazz orchestras of today. Bill Warfield, director.

Price \$15



SUN
17

STUDENT JAZZ CONCERT

JAZZ ORCHESTRA, JAZZ ENSEMBLE,
AND JAZZ COMBOS

3:00PM

Lehigh University Jazz students and faculty perform contemporary Jazz works for their fall concert. Bill Warfield, director.

Price \$12



SUN
24

WIND ENSEMBLE

A-ROVIN

3:00PM

Join the Lehigh University Wind Ensemble for an afternoon of folk music from around the world, including works by Grainger, Camphouse, Gilligham, Wood, Sparke and director Darin Lewis.

Price \$15

DECEMBER

FRI
6

PHILHARMONIC

AMERICAN MASTERWORKS

7:30PM

The Lehigh University Philharmonic opens their 2024-2025 season with a warm welcome for its new music director, Professor Kyle Wernke! Dr. Wernke and the orchestra members perform a selection of thrilling masterworks by American composers, including Bernstein's *Symphonic Dances* from *West Side Story*.

Price \$18

SAT
7

CHORAL ARTS

CHRISTMAS VESPERS
IN PACKER MEMORIAL CHURCH

4:00PM

8:00PM

Lehigh University Choral Arts presents its annual Christmas gift to the community. Sarah Frook Gallo, director; Liz Olson, associate director.

FREE

Free; No tickets required. Early arrival suggested.
Please note: Free parking is not available for this event.



JANUARY

FRI
31

LUVME

THE ART OF SONG II: SING US HOME

7:30PM

Continuing our theme of "the song," this concert will present the delightful song cycle, *Noah's Scrapbook*, by Kitty MacKinnon, featured works by Paul Salerni, and premieres by music department faculty members Darin Lewis and Kyle Wernke.

Price \$10



FEBRUARY

SUN
2

JAZZ FACULTY

MODERN WORKS
FOR SMALL JAZZ ENSEMBLE

3:00PM

Jazz lives in an improvisational setting. The Lehigh Jazz Faculty presents music by modern Jazz artists as well as some new compositions. Bill Warfield, director.

Price \$15



SUN
9

FIRST BIANNUAL SALERNI ART SONG RECITAL

3:00PM

Music by Arnold Schoenberg, Earl Kim, Paul Salerni and Heather Gilligan. Featuring Sarah Chafly, soprano, Steve Beck, piano, and others. This concert is in conjunction with a free documentary presentation of *Earl*, held in Baker Hall on March 27. See page 41 for details.

Price \$10



FRI
14

PHILHARMONIC

MAGICAL MUSICAL TALES

7:30PM

The Lehigh University Philharmonic presents a charming family-friendly program of storytelling music, featuring Ravel's enchanting *Mother Goose Suite* and more! Kyle Wernke, director.

Price \$18

SAT
15

7:30PM



SUN
16

THE PRINCETON SINGERS

4:00PM

The Princeton Singers is dedicated to producing high-quality choral performances of all cultures and periods, advocates for contemporary composers, and aims to share the joy of music with diverse audiences worldwide. Steven Sametz, artistic director.

Price \$18



FRI
28

DOLCE TREBLE CHOIR

RAISE YOUR VOICE

7:00PM

This concert is being held in Lamberton Hall located at 690 Taylor Street on Lehigh's campus.

FREE

This event is co-hosted by Dolce Treble Choir and the Center for Gender Equity.

FREE; No tickets required

Please note: Free parking is not available for this event.



MARCH

SAT
1
JAZZ REPERTORY ORCHESTRA
THE MUSIC OF COUNT BASIE

8:00PM Lehigh's Jazz Repertory Orchestra performs Big Band music by Basie in the Kansas City Big Band format, as well as works by Nestico, Hefti, Foster and others. Bill Warfield, director.
Price \$18

SUN
2
EUGENE ALBULESCU
FACULTY RECITAL

3:00PM Lehigh professor and celebrated Steinway Artist Eugene Albulescu returns to the Baker Hall stage with an uplifting piano recital featuring the music of Beethoven, Scarlatti and Liszt.
Price \$25

SAT
8
NEW YORK JAZZ
REPERTORY ORCHESTRA

8:00PM The New York Jazz Repertory Orchestra presents a concert of modern orchestral Jazz. Featuring the arrangements and compositions of Lehigh's Jazz faculty composers, hear some of New York City's finest Jazz musicians perform a wide variety of music of big band Jazz for a relaxing evening. Bill Warfield, director.
Price \$15



FRI
21

CHOIR, DOLCE AND GLEE CLUB

TRANSFORMATIONS

8:00PM

Lehigh University Choir, Dolce and Glee Club present music to accompany life's many changes, including music by Alex Berko and Sarah Quartel. Sarah Frook Gallo, director; Liz Olson, associate director.

Price \$15

SAT
22

8:00PM



THU
27

EARL.

FILM SCREENING

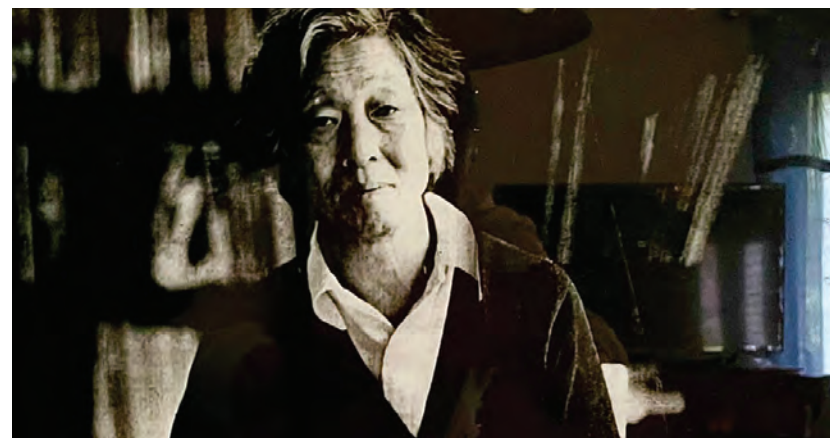
7:00PM

FREE

This is a full-length documentary film about Korean-American composer Earl Kim, featuring Itzhak Perlman, Scott Yoo, Paul Salerni, Laura Johnson and more. This film by Ty Kim deals with Earl Kim as a musical pioneer, a WWII veteran, a teacher, and a man of principles. Q&A to follow the screening.

Earl Kim's music will be featured in the Salerni Art Song Recital on February 9 (see page 38 for details).

Free admission; No tickets required.



SUN
MAR
30

MICHAEL JORGENSEN, VIOLIN & STEVE BECK, PIANO

...TO SLEEP, PERCHANCE TO DREAM...

3:00PM

Violinist Michael Jorgensen and pianist Steve Beck present an afternoon of music that celebrates Shakespeare and the beautifully complex world of dreams featuring Reena Esmail's Indian folk song-infused *Jhula Jhule*, Korngold's charming *Much Ado About Nothing* Suite, and phantasmagoric works by Bloch, Martinu and Webern.

Price \$15



APRIL

SUN
13

SYMPHONIC BAND

3:00PM

FREE

The Lehigh University Symphonic Band presents an afternoon of music from the movies and television, as well as classics from the band's repertoire, including works by Nelson, Grainger, and oh, by the way, they will throw in a couple marches for good measure. Darin Lewis, director.

Free; No tickets required.



FRI
25

PHILHARMONIC

CONCERTO MARATHON!

7:30PM

Come enjoy a heartwarming and exciting night at the symphony, as Lehigh Philharmonic student soloists perform concerto movements! The entire orchestra will play together for our stirring season finale, featuring Symphony No. 4 by Tchaikovsky. Kyle Wernke, director.

Price \$12



SUN
27

WIND ENSEMBLE

HOLST: *THE PLANETS*

3:00PM

Join the Wind Ensemble for a performance of Holst's *The Planets* originally transcribed for "The President's Own" United States Marine Band. It will surely be an afternoon that is out of this world and beyond! Darin Lewis, director.

Price \$15



MAY

FRI
2

CHORAL ARTS

QUESTIONS & COMFORT

8:00^{PM}

Featuring works for choir and orchestra, Lehigh University Choral Arts presents a concert of music that questions the nature of life and provides comfort. Repertoire includes the tumultuous *Insanae et vanae curae* by Franz Joseph Haydn, Fanny Mendelssohn Hensel's *Hiob*, and a comforting psalm setting by her brother, Felix Mendelssohn.

Sarah Froom Gallo, director; Liz Olson, associate director.

SAT
3

8:00^{PM}

Price \$18

SUN
4

STUDENT JAZZ CONCERT

JAZZ ORCHESTRA, JAZZ ENSEMBLE,
AND JAZZ COMBOS

3:00^{PM}

Lehigh University Jazz students and faculty perform contemporary Jazz works for their spring concert. Bill Warfield, director.

Price \$12





TROUBLE IN MIND

BY ALICE CHILDRESS

OCT 4, 5, 9* - 12 | 7:30PM • OCT 6 | 2PM

Willetta Mayer, an African American actress of a certain age, has spent her career playing stereotypes, trapped on a merry-go-round of mummies, maids, and other menials. The curtain rises on the first day of rehearsal for *Chaos in Belleville*, a Broadway-bound play that tackles the harsh truths of racism in America. But when those truths spill out of the play and into the rehearsal hall, will Willetta's insistence on her dignity cost her the work she desperately needs? Kashi Johnson, director.

Price \$12



WOLF PLAY

BY HANSOL JUNG

NOV 15, 16, 20* - 22 | 7:30PM • NOV 17 | 2PM

When an off-the-record adoption goes awry, Jeenu's new parents learn just how far a wolf will go to defend its pack. *Wolf Play* is a messy, funny and disturbing theatrical experience grappling with a wolf, a puppet, and the very problem of "What is a family, and what do we need from families today? Is it very different from what humans have needed from families before?"

Price \$12



PROOF

BY DAVID AUBURN

FEB 21, 22, 26 - 28, MAR 1 | 7:30PM • FEB 23 | 2PM

A gripping and dynamic exploration of genius, family, and the delicate balance between brilliance and madness. When Catherine discovers a groundbreaking mathematical proof among her deceased father's papers, she is forced to confront her own identity and genetic intellect, all at the mercy of her sanity. Sydney Weaver '25, director.

Price \$12



THE BOOKSTORE

BY ADAM SYMKOWICZ

APR 11, 12, 16 - 19 | 7:30PM • APR 13 | 2PM

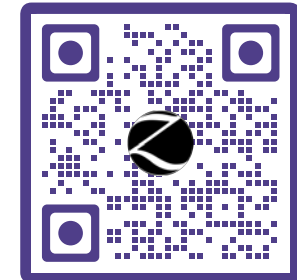
The future of a whimsical, almost magical bookstore is uncertain after the owner dies and leaves the shop to her niece Rachel. Rachel has a job in New York City that doesn't pay her enough and a fiancé that won't stop calling. She doesn't have the time or patience to run a bookstore, so when real estate magnate Max Brewer offers her more money than she can imagine to turn the store into an apartment complex, her choice seems like a no-brainer. But as the shop works its magic on her and she gets to know the eccentric employees and clientele, she starts to wonder: Can you really put a price on a beloved community bookstore?

Price \$12

ZOELLNER ARTS CENTER MAKE AN IMPACT

PLEASE **DONATE** • BECOME A **FRIEND**

Your charitable tax-deductible receipt will be calculated in accordance with guidelines supporting the benefits received for your donation.



SCAN TO DONATE

LEVEL	AMOUNT	BENEFIT 1	BENEFIT 2	BENEFIT 3	BENEFIT 4
FRIEND	\$100	Recognition in event programs			
PATRON	\$250	Recognition in event programs			
FELLOW	\$500	Recognition in event programs	(2) Tickets Music or Theatre Dept. Performance	Invitation to Season Preview Event when available	
ARTIST	\$1,000	Recognition in event programs	(2) Tickets Music or Theatre Dept. Performance	Invitation to Season Preview Event when available	
MAESTRO	\$2,500	Recognition in event programs	(2) Tickets Music or Theatre Dept. Performance	Invitation to Season Preview Event when available	2 TIX
PRODUCER	\$5,000	Recognition in event programs	(2) Tickets Music or Theatre Dept. Performance	Invitation to Season Preview Event when available	4 TIX

LEVELS & BENEFITS

SUBSCRIBE + SAVE

CHOOSE **3** EVENTS TO SUBSCRIBE!

SUBSCRIPTIONS OFFER
FLEXIBILITY & **EXCLUSIVE BENEFITS**

- Subscribers save up to 20% & pay **no per ticket service charges**
- **FREE and discount ticket offers** via email
- Plans change? **Exchange your tickets** if you can't make a show
- **Early access** for the best seats
- Invitation to **Season Preview** event with our Executive Director to learn about upcoming performances and **2 FREE Tickets to The Doo Wop Project** on May 17!
- Option to add SPRING events until October 31st before they go on sale to the general public to **SAVE EVEN MORE and get the best seats!**



Questions: 610-758-2787 ext.0 | inzactix@lehigh.edu



Photo Credits: Dalvin Adams, Bartek Barczyk, Amanda Bellucci, Kfir Bolotin, Chris Cameron, Calpulli Mexican Dance Company, Julieta Cervantes, Chris Cunningham, Jeremy Daniel, John Dias, Matt Dine, Benjamin Ealovega, Anna Galuza, Linda Ganus, Patricia Grande, Jack Hartin, Holden & Arts Associates, Ryan Hulvat, Christoph Koestlin, Lehigh University, LU Dept. of Theatre, LU Music Dept., Zach Mahone, Magenta Label Group, MANCC, Frances Marshall, Jim McGuire, Jaqlin Medlock, Sachyn Mital, NASA, Christa Neu, David Rugeles, Rutgers University, Shaw Entertainment Group, Tomato Production, Dario Treviño, Gael Della Valle, Joshua Black Wilkins, Hub Willson, Rosalie Winard

2024
2025
SEASON

SUBSCRIBE ANYTIME

Save & enjoy exclusive benefits like access to events & tickets before they go on sale to the public.

CHOOSE 3 EVENTS

or more to subscribe and enjoy all these benefits and more throughout the year.

MAKE AN IMPACT

Your support makes a direct and tangible impact on the artistic programming and educational outreach to thousands, every year.

GET YOUR TICKETS

CONTACT US

IN PERSON

Zoellner Arts Center
Ticket Services
420 East Packer Ave.
Bethlehem, PA 18015

ONLINE

www.zoellnerartscenter.org
email: inzactix@lehigh.edu

PHONE

610-758-2787 ext: 0



Box Office Hours: TUE 12-6PM, WED-FRI 12-5PM
For ticketed events: SAT 2 hours prior to curtain, 90 mins. all other days.
Check online for summer (May-Aug) and winter break (Dec - Jan) hours.

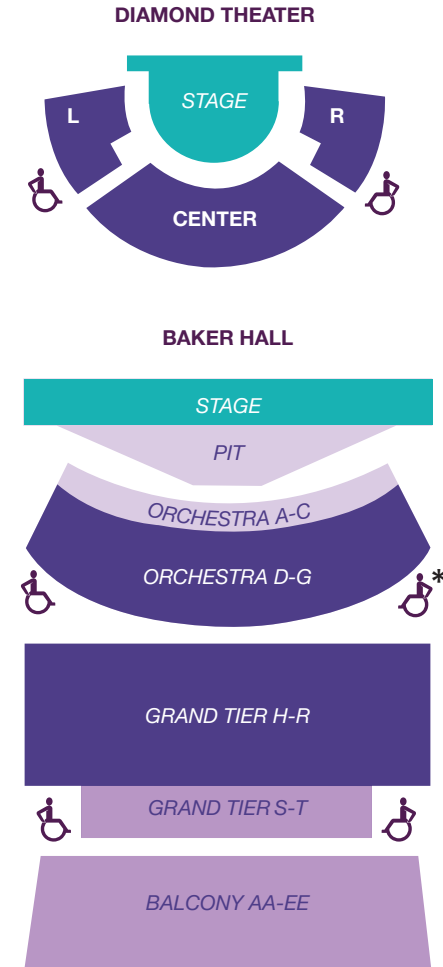
Senior, student, group, Lehigh University Faculty/Staff and LVAIC discounts available.

PARKING IS FREE in the garage attached to the center for all Presenting Series, Lehigh University Music Dept. and Dept. of Theatre events (excluding some weekday morning events, Christmas Vespers in Packer Chapel and Dolce in Lamberton Hall). Please note, there may be a parking charge for non-Zoellner sponsored events.

All programs and artists are subject to change. In the event of a cancellation or material change, we will make every effort to contact all ticket holders. We must reserve the right to make any changes whatsoever in the event owing to any unforeseen or unavoidable cause or to cancel the event for any reason beyond our control without being liable to pay any ticket holder compensation for damages other than a ticket of comparable value to an event (based on availability).

Prices separated by slashes indicate seating area locations differentiated by color. Please note, not all sections are available for all performances.

SEATING CHARTS



Zoellner is a fully accessible facility. Free assistive listening devices available. Check online for details.

***Note: We have increased our accessible seating areas for Kinetic Light. Questions? Please contact the box office.**

Baker Hall: All seats except ADA seating and those in row S are accessed by steps.
Diamond Theater: All seats except ADA seating are accessed by steps.

PICK 3-PACKAGE AND SAVE!

Order early
for best seats



PACKAGE BENEFITS

Select 3 or more & save up to 20%! <small>GA= General Admission RS=Reserved Seating P=Plt Section</small>		DATE & TIME	PACKAGE PRICE	# TICKETS	STUDENT/CHILD PACKAGE PRICE	# TICKETS	TOTAL		
AUGUST 2024									
MD	The Trio Sallase	GA		Fri 30 - 7:30p	\$8	X	\$5	X	\$
SEPTEMBER 2024									
MD	LUVME	GA		Sat 7 - 7:30p	\$8	X	\$5	X	\$
MD	Hell's Kitchen Funk	GA		Sat 21 - 8p	\$15	X	\$5	X	\$
MD	Faculty String Quartet	GA		Sun 22 - 3p	\$13	X	\$5	X	\$
FS	Somos Amigos	GA		Sat 28 - 12p	\$13	X	\$10	X	\$
OCTOBER 2024									
THR	Trouble in Mind	GA		circle one: 4•5•9•10•11•12•7:30p 6-2p	\$10	X	\$5	X	\$
PS	Kinetic Light (masks must be worn)	GA		Sat 5 - 7:30p	\$29	X	\$25	X	\$
PS	Temple Grandin	RS		Sun 13 - 4p	\$33	X	\$28	X	\$
FS	123 Andrés	GA		Thu 17 - 12:30p	\$5	X	\$5	X	\$
PS	Fleck & Washburn	RS		Fri 18 - 7:30p	\$37	X	\$33	X	\$
PS	Glen Miller Orch.	RS		Sun 20 - 4p	\$29	X	\$25	X	\$
MD	LU Choral Arts	GA		circle one: Fri 25 • Sat 26 - 8p	\$15	X	\$5	X	\$
NOVEMBER 2024									
PS	Plena Libre	RS		Sat 2 - 7:30p	\$21	X	\$18	X	\$
MD	Princeton Singers	GA		Sun 3 - 4p	\$15	X	\$5	X	\$
FS	Rumplestiltskin	GA		Sat 9 - 11a	\$13	X	\$10	X	\$
MD	LU Jazz Rep Orch	GA		Sat 9 - 8p	\$13	X	\$5	X	\$
THR	Wolf Play	GA		circle one: 15•16•20•21•22•7:30p 17-2p	\$10	X	\$5	X	\$
PS	101 Years of Bway	RS		Sat 16 - 7:30p	\$29	X	\$25	X	\$
MD	LU Student Jazz	GA		Sun 17 - 3p	\$10	X	\$5	X	\$
MD	LU Wind Ens.	GA		Sun 24 - 3p	\$13	X	\$5	X	\$
DECEMBER 2024									
PS	The Irish Tenors	RS		Sun 1 - 4p	\$41	X	\$36	X	\$
MD	LU Philharmonic	GA		circle one: Fri 6 • Sat 7 - 7:30p	\$15	X	\$5	X	\$
PS	BGLV The Nutcracker	RS		circle one: Sat 14 • Sun 15 - 12p & 4p	\$41	X	\$41	X	\$
PS	King's Singers: Christmas	RS		Fri 20 - 7:30p	\$37	X	\$33	X	\$
PS	Cherish the Ladies	RS		Sun 22 - 4p	\$37	X	\$33	X	\$
JANUARY 2025									
MD	LUVME	GA		Fri 31 - 7:30p	\$8	X	\$5	X	\$
FEBRUARY 2025									
PS	Yamato	RS		Sat 1 - 7:30p	\$37	X	\$33	X	\$
MD	LU Jazz Faculty	GA		Sun 2 - 3p	\$13	X	\$5	X	\$
PS	Kings Return	RS		Fri 7 - 7:30p	\$21	X	\$18	X	\$
PS	One Vision of Queen	RS P		Sat 8 - 7:30p	\$41	X	\$36	X	\$
MD	Salerni Art Song	GA		Sun 9 - 3p	\$8	X	\$5	X	\$
MD	LU Philharmonic	GA		circle one: Fri 14 • Sat 15 - 7:30p	\$15	X	\$5	X	\$
MD	Princeton Singers	GA		Sun 16 - 4p	\$15	X	\$5	X	\$
THR	Proof	GA		circle one: 21•22•26•27•28-7:30p 23-2p	\$10	X	\$5	X	\$
FS	The Aluminum Show	GA		Sat 22 - 4p	\$24	X	\$20	X	\$
PS	Bella Gala	RS		Fri 28 - 7:30p	\$21	X	\$18	X	\$
MARCH 2025									
THR	Proof	GA		Sat 1 - 7:30p	\$10	X	\$5	X	\$
MD	LU Jazz Rep Orch	GA		Sat 1 - 8p	\$15	X	\$5	X	\$
MD	E Albuvescau piano	GA		Sun 2 - 3p	\$21	X	\$15	X	\$
PS	Academy of St Martin...	RS		Fri 7 - 7:30p	\$37	X	\$33	X	\$
MD	NV Jazz Rep Orch	GA		Sat 8 - 8p	\$13	X	\$5	X	\$
MD	LU Choir, Dolce, Glee	GA		circle one: Fri 21 • Sat 22 - 8p	\$13	X	\$5	X	\$
FS	Goodnight Moon	GA		Sun 23 - 4p	\$13	X	\$10	X	\$
PS	Pascualia Ihabaca V Fauna	RS		Fri 28 - 7:30p	\$21	X	\$18	X	\$
PS	The Sound of (Black) Music	RS		Sat 29 - 7:30p	\$29	X	\$25	X	\$
MD	Jorgensen and Beck	GA		Sun 30 - 3p	\$13	X	\$5	X	\$

Listed prices reflect the subscription discount and include the City of Bethlehem Amusement tax. | Programs Subject to Change.

(OVER)

APRIL 2025

PS	Calpulli: Mexican Dance	RS	Fri 4 - 7:30p	\$29	X	\$25	X	\$
PS	R.E.S.P.E.C.T.	RS P	Sun 6 - 7p	\$41	X	\$36	X	\$
PS	Pharaoh's Daughter	GA	Thu 10 - 7:30p	\$8	X	\$7	X	\$
PS	American Brass Quintet	RS	Fri 11 - 7:30p	\$21	X	\$18	X	\$
THR	The Bookstore	GA	circle one: 11•12•16•17•18•19-7:30p 13-2p	\$10	X	\$5	X	\$
MD	LU Philharmonic Concertos	GA	circle one: Fri 25 • Sat 26 - 7:30p	\$10	X	\$5	X	\$
MD	LU Wind Ensemble	GA	Sun 27 - 3p	\$13	X	\$5	X	\$

MAY 2025

MD	LU Choral Arts: Questions...	GA	circle one: Fri 2 • Sat 3 - 8p	\$15	X	\$5	X	\$
MD	LU Student Jazz	GA	Sun 4 - 3p	\$10	X	\$5	X	\$
FS	The Paper Escaper	GA	Sun 11 - 4p	\$9	X	\$8	X	\$
PS	The Doo Wop Project w/ Season Preview Party	RS	Sat 17 - 7:30p	FREE (up to two tickets) must buy 3 or more events from list above			# of Tix _____	

Listed prices reflect the subscription discount and include the City of Bethlehem Amusement tax. Programs Subject to Change.

(TRANSFERRED FROM OTHER SIDE OF THIS PAGE) **SIDE 1 TOTAL** \$ _____

ONE-TIME HANDLING FEE \$ 10.00

3 (OR MORE) **EVENT PACKAGE TOTAL** \$ _____

SEATING PREFERENCES:

PLEASE note, all seats besides ADA seating (and row S in Baker Hall) are accessed by using stairs. Refer to page 48 for seating charts.

WHEELCHAIR SPACE(S) _____ **COMPANION SEAT(S)** _____

PLEASE DONATE! YOUR GIFT MAKES AN IMPACT.

- Friend \$100
- Patron \$250
- Fellow \$500
- Artist \$1,000
- Maestro \$2,500
- Producer \$5,000
- Other: _____

Matching gift: Company: _____

I choose **not** to receive any benefits, beyond program listing, making my entire gift charitable.

Please list my name in the program as: _____

Please attribute my gift to:

- Presenting Series & Performances 0401
- Lehigh Creative Campus initiatives 0406
- Community Engagement & Impact 0407
- Accessible Arts 0408
- Wherever it is most needed

For a full description of benefits visit zoellnerartscenter.org

_____ Charge this gift now or I pledge this gift to be paid by 6/30/25 **GIFT** \$ _____

Signature _____

GRAND TOTAL \$ _____

- Visa
- Mastercard
- Amex
- Discover
- CHECK payable to Lehigh University

Name _____

Street Address _____

Card # _____

City, State, Zip _____

Name on card _____

() _____ / _____

Phone _____ Exp date _____

Email _____

I am a (please check all that apply):

- LU Alumnus, class of _____
- LU Faculty/Staff
- Senior Citizen (60+ years)
- LVAIC Faculty/Staff
- Household w/kids under 18

FOR OFFICE USE ONLY					
REC'D	INFO	SALE	W P M I		
MAIL	CODE	DN	Y N		
PD	FORM	FIN			

MAIL TO: ZOELLNER TICKET SERVICES, 420 E. PACKER AVE., BETHLEHEM, PA 18015

THANK YOU

Leadership Funding: **Victoria E. and Robert E. Zoellner '54 '15GP**

PROGRAM SUPPORT



MARC A. FALATO '87

W. BEALL FOWLER '59



BRENDA & JOHN MCGLADE '76 '81G



MEDIA PARTNERS



ADDITIONAL SUPPORT

Curtain Warmers: **The Arnan and Marlene Finkelstein Endowment Fund**

School Shows: **Richard H. Johnson '73G • The Long Family Endowment for Community Outreach in the Arts**

Music Initiatives: Supported in part by the **Klees Family Instrumental Ensemble Endowed Fund**

Creative Campus Initiative: Supported in part by the **Anne R. Kline '81 Endowed Fund for Creatively Integrated Programming**

Notations: **Lehigh University Creative Writing Program** and **Zoellner Arts Center**

Temple Grandin: **Lehigh University College of Education** and **Lehigh University Autism Services**

SPECIAL ACKNOWLEDGMENTS



Zoellner Arts Center receives state arts funding support through a grant from the Pennsylvania Council on the Arts, a state agency funded by the Commonwealth of Pennsylvania.





ZOELLNER ARTS CENTER

420 East Packer Avenue
Bethlehem, PA 18015
(610) 758-2787

Non-Profit Org.
US Postage
PAID
Permit No. 504
Lehigh Valley, PA

2024 2025 SEASON BROCHURE

