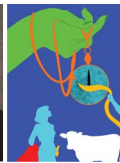


ZOELLNER ARTS CENTER

LEHIGH UNIVERSITY



2 0 2 5

2 0 2 6

PLAYBILL

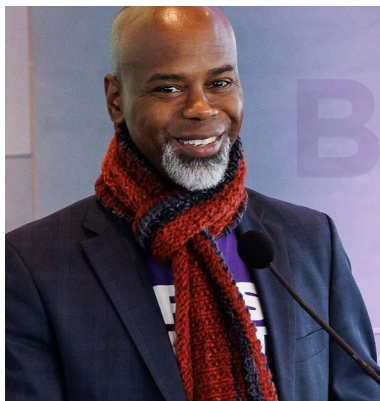


Photo By John Kish IV

DEAR FRIENDS,

It's hard to **believe**, but I've now spent over five years as executive director of Zoellner Arts Center. As I write this, I'm filled with gratitude. What an honor it has been—and continues to be—to come to work each day with a mission to connect our urban, suburban, and rural communities through the arts. Thank you for welcoming me so warmly to the Lehigh Valley and for continuing to walk alongside us on this journey.

This season opens on high notes — with The Bacon Brothers and Morgan Freeman's Symphonic Blues Experience. These

Hollywood heavyweights have also centered music in their award-winning careers. The world-renowned Philharmonia Orchestra, under the prestigious baton of Marin Alsop, will perform stirring works of Tchaikovsky, Bartók, and Prokofiev, filling our hall with beauty and power. Mark Morris Dance Group returns with their signature blend of live music, exquisite movement, and bold fashion—this time set to the music of Burt Bacharach.

We're thrilled to welcome back audience favorites like Postmodern Jukebox and the Vienna Boys Choir, and to continue our commitment to family-centered programming through the Lehigh Valley Reilly Children's Hospital Family Series. Our pre-show conversations with Lehigh Valley Health Network health professionals have become a highlight, and we're excited to continue exploring the growing intersection of arts and wellness. Stay tuned for more news on this front.

In the winter and spring, we invite you to experience the electrifying energy of Drum Tao, the return of the moving virtual reality installation *Traveling While Black*, and a celebration of Jane Austen's 250th birthday with a delightful project by The Jane Austen Playlist. The Ukulele Orchestra of Great Britain will leave you smiling, while The Tallis Scholars—the world's preeminent early music vocal ensemble—will offer a transcendent performance in the beautiful Packer Memorial Church. Finally, we close the season with **the** joyful rhythms of the NYC Ska Orchestra.

Zoellner Arts Center embraces its role as a university-based presenter. We are a space for a community of practice where educators and future makers converge. Student artists, along with the Departments of Music and Theatre and Lehigh University Art Galleries (LUAG), present concerts, plays, and exhibitions that reflect both their talent and the faculty who inspire them.

As always, we're proud to be a space where creativity, community, and connection come together. Thank you for being part of this journey and for making Zoellner Arts Center such a vibrant home for the **arts**.

With gratitude,

Mark Fitzgerald Wilson

Executive Director

THANK YOU

Leadership Funding: Victoria E. and Robert E. Zoellner '54 '15GP

PROGRAM SUPPORT



MEDIA PARTNERS



ADDITIONAL SUPPORT

Claire and Ted Diamond '37 '85H Endowment

Marc A. Falato '87 Presenting Series Endowment Fund

The Arnan and Marlene Finkelstein Endowment Fund

Richard H. Johnson '73G

Klees Family Instrumental Ensemble Endowed Fund

Anne R. Kline '81 Endowed Fund for Creatively Integrated Programming

Lehigh University College of Arts and Sciences

The Long Family Endowment for Community Outreach in the Arts

SPECIAL ACKNOWLEDGMENTS



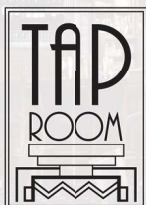
Zoellner Arts Center receives state arts funding support through a grant from the Pennsylvania Council on the Arts, a state agency funded by the Commonwealth of Pennsylvania.



Historic
Hotel Bethlehem
Historic Hotels of America

ENJOY DINNER AND DESSERT ON THE
#1 BEST MAIN STREET IN AMERICA!

437 MAIN STREET, BETHLEHEM, PA HOTELBETHLEHEM.COM



HOTEL B

ICE CREAM PARLOR





Care that's kid-approved.

Kid-centric spaces.
Kid-sized medical equipment.
Kid-focused doctors.

That's just a few of the many reasons our children's hospital is kid-approved. Lehigh Valley Reilly Children's Hospital is here for whatever childhood brings your family's way. From routine checkups to unexpected visits to the ER, we provide the area's most comprehensive care just for kids.

LVHN.org/children



**Lehigh Valley
Reilly Children's
Hospital**

part of

 **Jefferson Health**



LOCATED IN THE HEART OF THE VALLEY



SPACIOUS, UPSCALE APARTMENTS WITH 1-3 BEDROOMS

Discover your ideal apartment with our variety of studio to three-bedroom floor plans, featuring select units with breathtaking views and luxury unit features.

PREPARED TO ELEVATE?

The Marshall is unlike anything you've seen in Lehigh Valley with next level amenities, an expansive courtyard, and an intentionally curated lifestyle for a student like you. Our amenities have been designed to maximize your indoor and outdoor living – come discover a new standard of luxury.



WHERE YOU WILL WANT TO BE

Near The Marshall, there are plenty of opportunities to explore Lehigh Valley's lively entertainment and restaurant hubs. Whether you're craving a vibrant social or cultural scene, our neighborhood has it all.

CONTACT US TO SECURE HOUSING TODAY



484-810-4140



www.themarshallvalley.com



117 East 4th Street Bethlehem, PA 18015

Financial Planning for Life Priorities



Forbes
2025

**BEST-IN-STATE
TOP WOMEN
WEALTH ADVISORS**
SHOOK® RESEARCH



JULIE KNIGHT
WEALTH ADVISORY
of Janney Montgomery Scott LLC



JULIE KNIGHT
CERTIFIED FINANCIAL PLANNER®, ACCREDITED ESTATE PLANNER®,
AIF®, CLTC®, CDFA®

First Vice President / Wealth Management, Financial Advisor

Julie Knight Wealth Advisory of Janney Montgomery Scott LLC

1390 Ridgeview Drive, Suite 101, Allentown, PA 18104

Direct/Text 610.674.6981 | www.julieknightwealthadvisory.com

*For more information about any awards referenced, including relevant criteria,
please visit Janney.com/awards-disclosures*

© JANNEY MONTGOMERY SCOTT LLC • MEMBER: NYSE, FINRA, SIPC • REF. 1970550-0525

Patti's Petals
Andy's
& Pennewell's
**FLOWER And
GIFT SHOP**

Thanks for supporting Bethlehem's local florist.
Providing quality flowers at fair prices and with
superior service for 37 years!



1135 Main St., Hellertown, PA 18055
(610) 838-0121 • andysflowershop.net

OCT 17 Fri
7:30pm | Baker Hall

MARK MORRIS DANCE GROUP

THE LOOK OF LOVE

An Evening of Dance to the Music of BURT BACHARACH



Photo by: David Bazemore

**ZOELLNER
ARTS CENTER**
LEHIGH UNIVERSITY



2025.2026
SEASON

Zoellner Arts Center receives state arts funding support through a grant from the Pennsylvania Council on the Arts, a state agency funded by the Commonwealth of Pennsylvania.



MARK MORRIS DANCE GROUP

MICA BERNAS KARLIE BUDGE SARAH HILLMON COURTNEY LOPES
DALLAS McMURRAY ALEX MEETH SLOAN PEARSON*
BRANDON RANDOLPH CHRISTINA SAHAIDA DENIZ ERKAN SANCAK†
BILLY SMITH JOSLIN VEZEAU NOAH VINSON

*Apprentice

†Guest artist

MMDG MUSIC ENSEMBLE

CLINTON CURTIS JONATHAN FINLAYSON MARCY HARRIELL
ETHAN IVERSON BLAIRE REINHARD VINNIE SPERRAZZA
SIMÓN WILLSON

Artistic Director
MARK MORRIS

Executive Director
NANCY UMANOFF

Director of Technical Production
JOHAN HENCKENS

Rehearsal Director
ELISA CLARK

Music Director
COLIN FOWLER

Official Tour Sponsor

**Bloomberg
Philanthropies**

PROGRAM

THE LOOK OF LOVE

Music by Burt Bacharach

Lyrics by Hal David

Lyrics from "The Blob" by Mack David

Arranged by Ethan Iverson

Choreography by Mark Morris

Costume and Production Design by Isaac Mizrahi

Lighting Design by Nicole Pearce

Alfie

What the World Needs Now

I'll Never Fall in Love Again

Message to Michael

Raindrops Keep Falling on My Head

Do You Know the Way to San Jose

Anyone Who Had a Heart

Walk on By

Don't Make Me Over

Are You There (With Another Girl)

The Blob

Always Something There to Remind Me

The Look of Love

I Say a Little Prayer

Used by permission. All rights reserved.

Marcy Harriell, *lead vocals*; Ethan Iverson, *piano*; Jonathan Finlayson, *trumpet*;

Simón Willson, *bass*; Vinnie Sperrazza, *drums*;

Clinton Curtis and Blaire Reinhard, *background vocals*

Mica Bernas, Karlie Budge, Sarah Hillmon, Courtney Lopes, Alex Meeth,
Dallas McMurray, Brandon Randolph, Christina Sahaida, Deniz Erkan Sancak,
Billy Smith

The Look of Love is a production of the Mark Morris Dance Group; BAM; BroadStage, Santa Monica; Cal Performances, UC Berkeley; The Jay and Susie Gogue Performing Arts Center at Auburn University; Hopkins Center for the Arts at Dartmouth; and Krannert Center for the Performing Arts, University of Illinois Urbana-Champaign in association with Arizona Arts Live, University of Arizona; Harriman-Jewell Series; The John F. Kennedy Center for the Performing Arts; Modlin Center for the Arts at University of Richmond; Moss Arts Center at Virginia Tech; Marybelle and Sebastian P. Musco Center for the Arts; Tennessee Performing Arts Center; UC Santa Barbara Arts & Lectures; and Virginia Arts Festival.

This evening's program will be performed without an intermission.



MARK MORRIS was born on August 29, 1956, in Seattle, Washington, where he studied with Verla Flowers and Perry Brunson. In the early years of his career, he performed with the companies of Lar Lubovitch, Hannah Kahn, Laura Dean, Eliot Feld, and the Koleda Balkan Dance Ensemble. He formed the Mark Morris Dance Group (MMDG) in 1980 and has since created over 150 works for the company. From 1988 to 1991, he was Director of Dance at Brussels' Théâtre Royal de la Monnaie, the national opera house of Belgium. In 1990,

he founded the White Oak Dance Project with Mikhail Baryshnikov. Much in demand as a ballet choreographer, Morris has created 22 ballets since 1986, and his work has been performed by companies worldwide, including San Francisco Ballet, American Ballet Theatre, Ballet am Rhein, Dusseldorf, and the Royal New Zealand Ballet. Noted for his musicality, Morris has been described as "undeviating in his devotion to music" (*The New Yorker*). He began conducting performances for MMDG in 2006 and has since conducted at Tanglewood Music Center, Lincoln Center, and BAM (Brooklyn Academy of Music). He served as Music Director for the 2013 Ojai Music Festival. He also works extensively in opera, directing and choreographing productions for the Metropolitan Opera; New York City Opera; English National Opera; and The Royal Opera, Covent Garden; among others. He was named a Fellow of the MacArthur Foundation in 1991 and has received eleven honorary doctorates to date. He has taught at the University of Washington, Princeton University, and Tanglewood Music Center. A Doris Duke Artist, Morris is a member of the American Academy of Arts and Sciences and the American Philosophical Society and has served as an Advisory Board Member for the Rolex Mentor and Protégé Arts Initiative. He has received the Samuel H. Scripps/American Dance Festival Award for Lifetime Achievement, the Leonard Bernstein Lifetime Achievement Award for the Elevation of Music in Society, the Benjamin Franklin Laureate Prize for Creativity, the International Society for the Performing Arts' Distinguished Artist Award, Cal Performances Award of Distinction in the Performing Arts, the Orchestra of St. Luke's Gift of Music Award, and the 2016 Doris Duke Artist Award. In 2015, Morris was inducted into the Mr. and Mrs. Cornelius Vanderbilt Whitney Hall of Fame at the National Museum of Dance in Saratoga Springs, New York. He is the subject of a biography, *Mark Morris*, by Joan Acocella (Farrar, Straus & Giroux), and Marlowe & Company published a volume of photographs and critical essays entitled *Mark Morris' L'Allegro, il Penseroso ed il Moderato: A Celebration. Mark Morris: Musician-Choreographer*, by musicologist Stephanie Jordan, was released in 2015. Morris' memoir, *Out Loud*, co-written with Wesley Stace, was published in paperback by Penguin Press in October 2021. Morris opened the Mark Morris Dance Center in Brooklyn, New York, in 2001 to provide a home for his company, subsidized rental space for local artists, community education programs for children and seniors, and a school offering dance classes to students of all ages and levels of experience with and without disabilities.

Celebrating its 45th anniversary, the **MARK MORRIS DANCE GROUP** (MMDG) stands as a beacon of artistic excellence and innovation in the world of dance. Founded in 1980, the company made its debut in New York City and quickly rose to prominence with a touring schedule that expanded across the U.S. and around the globe. In 1986, MMDG captivated national audiences with its first television appearance on PBS's *Dance in America*, and just two years later, it was named the national dance company of Belgium, enjoying a prestigious three-year residency at Brussels' Théâtre Royal de la Monnaie. Returning to the U.S. in 1991, MMDG solidified its reputation as one of the world's leading dance companies.

MMDG has a long and celebrated history of performing at Lincoln Center's Mostly Mozart and White Light Festivals, as well as at the Brooklyn Academy of Music (BAM), where it continues to appear regularly. The company also maintains deep-rooted partnerships with major cultural institutions, including its West Coast home, Cal Performances in Berkeley, and its Midwest home at the Krannert Center at the University of Illinois.

MMDG's international acclaim includes two Laurence Olivier Awards and a Critics' Circle Dance Award for Best Foreign Dance Company, earned during its celebrated London seasons. True to founder Mark Morris's vision, the company has performed with live music at every show since the creation of the MMDG Music Ensemble in 1996. Collaborations with world-renowned artists such as Yo-Yo Ma, Emanuel Ax, Stephanie Blythe, and Ethan Iverson, as well as leading orchestras like the Metropolitan Opera and London Symphony Orchestra, have become hallmarks of the company's performances.

MMDG also boasts a rich history of interdisciplinary collaborations with visual artists and designers including Robert Bordo, Howard Hodgkin, Adrienne Lobel, Allen Moyer, Isaac Mizrahi, and Martin Pakledinaz. Its film and television work includes *Dido and Aeneas*, *The Hard Nut*, *Falling Down Stairs*, and PBS's *Great Performances* broadcast of *L'Allegro, il Penseroso ed il Moderato*.

Beyond the stage, MMDG is deeply committed to community engagement, offering inclusive arts and humanities programs for people of all ages and abilities wherever it tours. As it marks 45 years of groundbreaking artistry, MMDG continues to inspire, innovate, and connect through the power of dance.

Integral to the Mark Morris Dance Group's identity, the **MMDG MUSIC ENSEMBLE** celebrates nearly three decades of musical excellence in 2025. Formed in 1996 to fulfill Morris's unwavering commitment to live music, the Ensemble has accompanied every MMDG performance since its inception—an artistic choice that sets the company apart. As *Classical Voice of North Carolina* aptly put it: "With the dancers come the musicians... and what a difference it makes." Led by Music Director Colin Fowler, who began

collaborating with MMDG in 2005 during the creation of *Mozart Dances*, the Ensemble's repertoire spans centuries—from the baroque elegance of Henry Purcell to the contemporary rhythms of Ethan Iverson, Lou Harrison, and Henry Cowell. The musicians are not only performers but also participate in MMDG's community and educational initiatives both at home and on tour. As MMDG celebrates its 45th anniversary, the Music Ensemble continues to be a vital force, enriching every performance.



BURT BACHARACH (1928-2023) was one of the world's most acclaimed, award-winning composer/songwriters. His music is as diverse as his audiences, spanning generations and continents, as he is celebrated both as a pop culture icon and one of the world's greatest contemporary composers. Bacharach's credits read like the world's favorite radio stations' playlist: "Alfie," "Arthur's Theme," "Close To You," "Do You

Know The Way To San Jose," "I Say A Little Prayer," "I'll Never Fall In Love Again," "This Guy's In Love With You," "Walk On By," "What The World Needs Now Is Love," and "Wishin' And Hopin'" are among just the 48 top ten hits and nine #1 songs. Bacharach and Hal David were the recipients of the 2012 Library of Congress Gershwin Prize for Popular Song. The prize is awarded to musicians whose lifetime contributions in the field of popular song exemplify the standard of excellence associated with the Gershwins. Bacharach and David received the Library's Gershwin Medal in May 2012 at an all-star tribute in Washington, DC. Bacharach's memoir, *Anyone Who Had a Heart*, was released in May 2013. For the first time in his long and astonishing career, Bacharach told his story of love, heartbreak, success, failure, and unbridled ambition in *Anyone Who Had a Heart*, which is named after one of many songs Bacharach and David wrote for Dionne Warwick. The memoir was published by HarperCollins. Bacharach composed his first film score in 16 years for John Asher's autism-based drama film *Po*. The film was released in April 2016. *Po* tells the story of a recently widowed father struggling to raise his ten-year-old son who has autism. Bacharach and Daniel Tashian released two new songs called "Moon Over Wichita" and "Heartbreak Storms" via Big Yellow Dog Music in April 2022. The songs are a continuation of their Grammy nominated *Blue Umbrella* EP, released in 2020, and *Blue Umbrella (The Complete Recordings)*, which was released in 2021 and featured four never-before-heard songs. Bacharach and Steven Sater's *Some Lovers*, featuring vocal performances from some of Broadway's most beloved co-stars, was released on November 26, 2021. The album was nominated for a Grammy Award for Best Musical Theater Album.



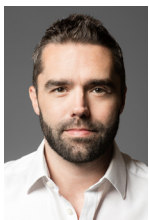
HAL DAVID (1921-2012) is known for his award-winning lyrics that have been featured in films, Broadway shows, and music charts throughout his career. Being honored through numerous Grammys, the NARM Presidential Award, and more, he is most known for his collaborations with composer Burt Bacharach,

whom he met in 1957. The two wrote their first hit, "The Story of My Life," and then continued to write iconic American pop songs throughout the 1960s and 70s. In 2012, David and Burt Bacharach received the Gershwin Prize for Popular Song. But the duo was not just known for the pop songs they created. They also wrote for movies, with four of their songs being nominated for Academy Awards: "What's New, Pussycat?," "Alfie," "The Look of Love," and "Raindrops Keep Falling on My Head." "Raindrops Keep Falling on My Head" also won an Oscar in 1970. Lincoln College bestowed a Doctor of Music degree on David for his contribution to American music. In October of 2007, David received an Honorary Degree from the Five Towns College in Long Island, and, in addition, they named their new Music Library building The Hal David Music Library. David is a member of the Nashville Songwriters Hall of Fame and was the first non-British person to receive the Ivor Novello Award from the British Performing Rights Society.



In 2002 **ETHAN IVERSON** (arranger, piano) helped form The Bad Plus, a revolutionary and wildly successful avant-garde trio that *The New York Times* said was "Better than anyone at melding the sensibilities of post-60's jazz and indie rock." Since leaving TBP, Iverson has released critically-acclaimed jazz albums on ECM and Blue Note, often accompanied by bonafide jazz stars such as Tom Harrell or Jack DeJohnette. *Downbeat* has called Iverson "A master of melody" while *Hot House*

recently raved, "Known for his intellectual depth and adventurous musical spirit, Ethan Iverson has traversed the boundaries of jazz tradition while leaving an indelible mark on its evolution." After witnessing a 2024 concert of jazz standards spontaneously chosen by the audience, *Stereophile* wrote, "Iverson is a natural, consistent crowd-pleaser. For his entire career, he has been finding ways to be accessible while pushing the envelope." Iverson also has a long-standing relationship with choreographer Mark Morris, and within the last decade has created the scores to two recent Morris successes, *Pepperland* and *The Look of Love*. On top of his activities as a pianist and composer, Iverson has an active career as a writer, publishing significant criticism in *The Nation*, *JazzTimes*, *The New York Times*, and the Culture Desk of *The New Yorker*, in addition to posting frequently on his Substack, *Transitional Technology*.



COLIN FOWLER (music director) began his musical study at the age of five in Kansas City, went on to study at the Interlochen Arts Academy, and continued his education at The Juilliard School, where he received his Bachelor of Music in 2003 and his Master of Music in 2005. While at Juilliard, he studied piano with Abbey Simon, organ with Gerre Hancock and Paul Jacobs, harpsichord with Lionel Party, and conducting with James dePriest and Judith Clurman. A versatile musician and conductor, Fowler works in many areas of the music scene in New York

City. He is a veteran conductor and keyboardist of many Broadway shows, including *Jersey Boys*, *In the Heights*, *Wicked*, and the *Radio City Christmas Spectacular*. As a classical soloist and collaborative artist, he has performed and recorded with many world-renowned musicians and ensembles, including Deborah Voigt, Renée Fleming, The Knights, and the Los Angeles Philharmonic. He has arranged and conducted for numerous TV and film productions, including *Yellowstone* and Greta Gerwig's *Little Women*. He began to collaborate with the Mark Morris Dance Group in 2005 and has performed over 60 pieces with the company on almost every keyboard instrument possible, including the harmonium and toy piano. He has conducted performances of *Mozart Dances*, *Acis and Galatea*, *The Hard Nut*, and *L'Allegro, il Penseroso ed il Moderato*, and helped edit and create over 15 videodances with Mark Morris during the pandemic. Hailed by *The New York Times* as "invaluable" and "central to Morris' music," he was appointed Music Director in 2013.



MARCY HARRIELL (lead vocals) is a singer, actress, and designer. Music was as mandatory as air for the daughter of a truck-driving trumpeter and a gardening artist. In her childhood home, she delighted in drilling arias while jazz greats played in the background. Her ability to passionately embrace diverse vocal styles has made her a standout in New York theatre.

Jumping lithely amongst opera, rock, jazz, and R&B, *The New York Times* recently hailed her as a vocalist who "demolishes the furious torch song" with a "rafter rattling intensity." Broadway star turns include Tony Award-winning musicals *In the Heights*, *Rent*, and her nightly showstopping performance in *Lennon*, where the *New York Post* declared this "wildcat kitten" a "star in the making." Throughout her career, she has had the honor to work with numerous industry legends: Stephen Sondheim, who guided her performance of Marta in *Company* at Lincoln Center and the Kennedy Center; Athol Fugard, who directed her in the world premiere of his play *Sorrows & Rejoicings*; Jerome Robbins and Arthur Laurents, under whose masterful supervision Harriell deepened the role of Maria in *West Side Story*. "Superfriend" Lin-Manuel Miranda recruited her to record early demos for Disney's *Moana*, tapping Harriell's emotional interpretations for the soundtrack. Enamored by another interpretation, Quentin Tarantino wrote the role of "Marcy" for her in his film *Death Proof*. On the small screen, Harriell has been a series regular on NBC's *Ed*; HBO's *Nurse Jackie*; CBS's *Queens Supreme*; and has guest starred in numerous episodics, including *Manifest*, *NCIS*, *Law & Order*, and *Search Party*. When she's not onstage, onscreen, or in-studio, Harriell takes a happy audience on a colorful ride alongside her husband Rob in the hit YouTube series @TheHandmadeHarriells, creating couture garments for everyday life. In fact, she'll be wearing one of her creations tonight.



CLINTON CURTIS (background vocals) is a multi-genre singer, musician, and songwriter originally from Key West, Florida. As a choral singer he has worked with many of the world's luminary conductors and orchestras, most recently including engagements with the New York Philharmonic, Berlin Philharmonic, and San Francisco Symphony. March 2016 marked his operatic debut in *Curlew River* for the Mark Morris

Dance Group. As a popular songwriter and frontman for The Clinton Curtis Band he has toured internationally as a cultural ambassador with the U.S Department of State. He has released five original studio albums available at music.clintoncurtis.com.



BLAIRE REINHARD (background vocals) Since the premiere of *The Look of Love*, she has been thrilled to sing alongside these immensely talented dancers, musicians, and the visionary Mark Morris. Blaire has performed with a wide range of acts around the NYC area, and she leads the Blaire Reinhard Band on vocals and keyboard. She additionally records and composes music for television and film, with credits including *So You Think You Can Dance*, *Feel the Beat*, *Sweet Magnolias*,

The Voice, *Lincoln Heights*, *Inside Amy Schumer*, and *Dance Moms*. Blaire has also worked as music supervisor for shows like *Younger* and *Chappelle's Show*. Offstage, she is a proud mom of two, an avid gardener and cook, and a "so-so" platform tennis player.



JONATHAN FINLAYSON (trumpet) is an accomplished trumpeter, composer, and band leader. Named a rising star by *DownBeat* magazine, Finlayson has been an integral part of the creative music scene in New York since relocating in 2000. He is widely admired for his ability to negotiate cutting-edge material while bringing a strong sense of individuality and verve. Finlayson has garnered critical acclaim and recognition for his three recordings as a leader with his group Sicilian Defense.

He has also received much recognition for his contributions as a sideman with cutting-edge artists such as Steve Coleman, Henry Threadgill, Steve Lehman, and Mary Halvorson.



SIMÓN WILLSON (bass) is a Chilean-born, New York City-based bassist, composer, and improviser. As an eclectic and in-demand sideman, he has toured with a host of different artists in Europe, the United States, Canada, and South America. His wide-ranging interest in different realms of jazz and improvised music has led him to work with a diverse pool of established artists such as Dave Douglas, Ethan Iverson, Steve Cardenas, George Garzone, Jason Palmer, Rodney Green, Michael

Blake, Pablo Held, Jim Black, Tim Miller, and Frank Carlberg, among many

others. He also plays in bands of contemporaries such as Kevin Sun, Max Light, and Jacob Shulman. In addition to his sideman work, he co-leads the bands Great on Paper, Family Plan, and Earprint. The latter won the “best debut album” category of the NPR Music Jazz Critics Poll in 2016, and Family Plan released their debut album in September 2021, due to receiving a generous grant from the Chilean government. Willson can be heard on over twenty-five records for labels such as Tzadik, Steeplechase, Newvelle, and Endectomorph, in addition to a number of self-releases.



VINNIE SPERRAZZA (drums) is a Brooklyn-based jazz drummer. He has made a mark on the New York jazz community with his swinging, enthusiastic playing and his commitment to original projects. He has released three full-length albums of his original compositions for Loyal Label and Positone Records. In 2023, he released a trio album with pianist Ethan Iverson and bassist Michael Formanek, and a new suite of music composed for a group with guitarist

Brandon Seabrook and saxophonist Loren Stillman. Additionally, he has played on over 80 albums as a sideman. Notable recent touring has been with saxophonist and composer Ohad Talmor's Subway Lines; Stew and Heidi Rodewald in Stew and The Negro Problem; the Mark Morris Dance Group's *Pepperland*, composed and led by Ethan Iverson; the Michael Formanek Drome Trio, featuring new extended compositions by Michael Formanek; and the jazz collective Ember, featuring saxophonist Caleb Curtis and bassist Noah Garabedian. He is a member of the Hank Roberts Sextet and Hank Roberts Trio, and tours and records with the groups Landline, the Choir Invisible, Ember featuring Orrin Evans, Matt Bauder's Hearing Things, Vinnie Sperrazza-Jacob Sacks-Masa Kamaguchi PLAY, and trioTrio meets Shelia Jordan.



ELISA CLARK (rehearsal director) is an award-winning artist, educator, and administrator who trained at the Maryland Youth Ballet prior to receiving a B.F.A. from The Juilliard School under the direction of Benjamin Harkarvy, with guidance from Carolyn Adams. She first performed with Mark Morris Dance Group in 2005, remained a full-time company member through 2011, and frequently returned as a guest performer, company teacher, and stager through 2024, when she was

appointed Rehearsal Director. In addition to MMDG, she has been a featured company member with Alvin Ailey American Dance Theater, Lar Lubovitch Dance Company, and Monica Bill Barnes & Co, a guest artist for Buglisi Dance Theater, and has performed with Nederlands Dans Theater and the Metropolitan Opera in works by Jiri Kylian and Crystal Pite respectively, amongst others. Elisa was also a founding member and company manager for Robert Battle's Battleworks Dance Company and has served as Battle's artistic assistant for over two decades. As an educator

and mentor, she has been on faculty at the School at Jacob's Pillow, Princeton University, University of the Arts, American Dance Festival, Move NYC, Steps on Broadway, Marymount Manhattan College, and at Bard College in partnership with Gibney Company, to name a few, and has taught company class for MMDG, Alvin Ailey American Dance Theater, Ailey II, Ballet Hispanico, Gibney Company, Hubbard Street Dance Chicago and the Metropolitan Opera Ballet. She is currently on the ballet faculty at the Ailey School, Gibney, and the Mark Morris Dance Center. Elisa is a répétiteur for both Battle and Morris' works, and is also a Princess Grace Award Winner and a Certified Life Coach.



MICA BERNAS, originally from Manila, Philippines, received her training at the Cultural Center of the Philippines Dance School. She later joined Ballet Philippines as a member of the corps de ballet and rose up the ranks to Soloist. While at Ballet Philippines, she also studied at De La Salle University and graduated with a bachelor's degree in organizational communication in 2006. Upon graduating, she moved to New York and joined Carolyn Dorfman Dance. She was a guest

artist with the Limón Dance Company and worked with Karole Armitage, Gallim Dance, Marta Renzi, and Connecticut Ballet. As an educator, she has taught all levels of dance, including after school programs, pre-professional, and master classes. She has taught at the Limón Institute and formerly ran the dance program at BIMA at Brandeis University. She joined MMDG as a company member in 2017.



KARLIE BUDGE grew up in Knoxville, Tennessee, training and performing with the Tennessee Children's Dance Ensemble. She attended Case Western Reserve University on a full scholarship from the department of dance, graduating magna cum laude with a B.A. in dance and a B.S. in statistics in 2016. Budge has performed with Graham 2, Merce Cunningham Trust, and in her own solo and duet choreography. Budge joined MMDG as an apprentice in September 2018 and became

a company member in November 2019.



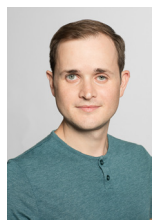
SARAH HILLMON was born and raised in Rochester, New York. There she trained with Garth Fagan and Timothy M. Draper and was a member of the Rochester City Ballet. She graduated with a B.F.A. in dance from New York University's Tisch School of the Arts, where she had the privilege of performing works by talented artists including Sidra Bell, Lucinda Childs, Gus Solomons Jr., and Charles Weidman.

After college, she became a member of Lucinda Childs Dance Company, where she toured the world performing classic works. While in

New York City, she has also had the honor to perform with artists such as Solange Knowles as well as a number of dance companies including Robert Mark Dance, Suzanne Beahrs Dance, BodyStories: Teresa Fellion Dance, DanceBoissiere, and the Daniel Gwirtzman Dance Company. She joined MMDG as an apprentice in 2023 and became a company member in 2024.



COURTNEY LOPES is originally from Bermuda and attended the University of North Carolina School of the Arts for her high school education. She graduated magna cum laude with a B.F.A. in dance from SUNY Purchase in 2012 and studied in Taiwan at the Taipei National University of the Arts. As a student, she performed works by Paul Taylor, Jessica Lang, Lar Lubovitch, and Huang Yi of Cloud Gate Dance Theater. In addition to performing with Dance Heginbotham for over nine years, she has worked as a freelance artist with Megan Williams, Sameena Mitta, Kathryn Alter, Sue Bernhard, and Robert Mark Burke. As an educator and répétiteur, she has worked with the Mason Gross School of the Arts at Rutgers University, Ballet Tech, 92Y Harkness Dance Center, Dance for PD®, and the José Limón Institute. She first performed with MMDG in 2017 and became a company member in 2023.



DALLAS McMURRAY, from El Cerrito, California, began dancing at age four, studying jazz, tap, and acrobatics with Katie Maltsberger and ballet with Yukiko Sakakura. He received a B.F.A. in dance from the California Institute of the Arts. McMurray performed with the Limón Dance Company in addition to works by Jiří Kylián, Alonzo King, Robert Moses, and Colin Connor. McMurray performed with MMDG as an apprentice in 2006 and became a company member in 2007.



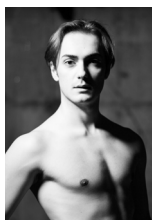
ALEX MEETH grew up in Dousman, Wisconsin, and began his dance training with Eddy Bray at the age of thirteen. After graduating from the Kettle Moraine School for Arts and Performance, he was accepted on scholarship to the Boston Conservatory at Berklee, where he graduated with a B.F.A. in contemporary dance performance (emphasis in choreography) in 2022. While at the Boston Conservatory, he performed works by Mark Morris, Catherine Coury, José Limón, Daniel Pelzig, and Bradley Shelver. Since 2019, he has additionally danced with the Boston Early Music Festival under the direction of Kathleen Fay and Melinda Sullivan. Alex first performed with MMDG in 2022 and became a company member in 2025.



SLOAN PEARSON is a multifaceted artist based in New York City. Originally from Charlotte, she began studying at Charlotte Ballet under the direction of ballet luminaries Jean- Pierre Bonnefoux and Patricia McBride. She received her BFA with a modern dance emphasis from the Point Park University Conservatory of Performing Arts. While at Point Park, Sloan was offered an apprenticeship with the August Wilson Dance Ensemble. Sloan has danced with Dayton Contemporary Dance Company, Kybele Dance Theater, and Debbie Allen as a dancer in her dance ensemble - later to be featured in her Netflix Documentary. She was honored to dance with the Paul Taylor 2 Dance Company, where she was Paul Taylor's last chosen dancer. During her four seasons she worked with Ron K. Brown, Larry Keigwen, and Peter Chu, before joining his company chuthis. Sloan has since worked with Tommie Waheed-Evans — Princess Grace Recipient both dancing and remounting his works, Holly Blakey for Puma New York Fashion Week, Yin Yue Dance Company, and the Metropolitan Opera in, "Carmen," choreographed by Ann Ye and directed by Carrie Cracknell, and most recently with Mark Morris Dance Group in Gluck's, "Orfeo ed Euridice." Pearson joined MMDG as an apprentice in 2025.



BRANDON RANDOLPH began his training with the School of Carolina Ballet Theater in Greenville, South Carolina, under the direction of Hernan Justo. At age 14, he was accepted into the South Carolina Governor's School for the Arts and Humanities, where he studied with Stanislav Issaev and Bobby Barnett. Randolph received his B.F.A. in dance from Purchase College in 2012. There he had the opportunity to perform with Dance Heginbotham as well as repertory by Stephen Petronio, Lar Lubovitch, Paul Taylor, and George Balanchine. Randolph began working with MMDG in 2013 and became a company member in 2014.



DENIZ ERKAN SANCAK began dancing with the National Team of Turkiye for Latin American Dance sports, represented his country in World Championships for several years around the world and went on to receive full-Scholarships to study dance at Conservatory of Dance at Purchase College, SUNY. Deniz worked with Opera Ballet Ankara, Tatbikat Theatre, Peridance Contemporary Dance Company, Wonderbound (Ballet Nouveau Colorado) and Korhan Başaran; and currently works with The Metropolitan Opera Ballet (Deborah Colker's "Ainadamar"), Stephen Petronio Company, Yoshiko Chuma, Douglas Dunn, Christopher Williams, Ellen Cornfield, Emily Pope, and Liz Gerring.



CHRISTINA SAHAIDA grew up in Pittsburgh, Pennsylvania, and began her early dance training at the Pittsburgh Ballet Theatre School. In 2012, she graduated with honors from Butler University, receiving a B.F.A. in dance performance. She has worked with Ballet Quad Cities, Texture Contemporary Ballet, and most recently the Big Muddy Dance Company in St. Louis, Missouri. Sahaida joined MMDG as an apprentice in 2017 and became a company member in 2019.



BILLY SMITH grew up in Fredericksburg, Virginia, and attended George Mason University under a full academic and dance talent scholarship. He graduated magna cum laude in 2007 and received achievement awards in performance, choreography, and academic endeavors. While at George Mason, he performed the works of Mark Morris, Paul Taylor, Lar Lubovitch, Doug Varone, Daniel Ezralow, Larry Keigwin, Susan Marshall, and Susan Shields. Smith's own piece, *3-Way Stop*, was selected to open the 2006 American College Dance Festival Gala at Ohio State University, and his original choreography for a production of *Bye Bye Birdie* garnered much critical praise. An actor as well, Smith's regional theater credits include Tulsa in *Gypsy*, Mistoffelees in *CATS*, and Dream Curly in *Oklahoma!* Smith danced with Parsons Dance from 2007-2010. He joined MMDG as a company member in 2010.



JOSLIN VEZEAU is from St. Louis, Missouri, where she trained at the Center of Creative Arts (COCA). She graduated magna cum laude from the Ailey/Fordham B.F.A. program in dance performance in 2018 and while there was awarded the Denise Jefferson Memorial Scholarship. During her senior year in college, she joined Peridance Contemporary Dance Company in New York and danced with that company for six seasons.

When not dancing, she is a personal trainer and loves rock climbing, volunteering at Brooklyn farmers markets, and taking care of dogs. She joined MMDG as an apprentice in 2023 and became a company member in 2024.



NOAH VINSON is originally from Springfield, Illinois, and received his B.A. in dance from Columbia College Chicago. He was named a *Dance Magazine* "Dancer on the Rise" in 2009 and assisted Mark Morris in the creation of *The Letter V* for Houston Ballet. He began dancing with MMDG in 2002 and became a company member in 2004.



ISAAC MIZRAHI (costume and production design) has worked extensively in the entertainment industry as a performer, host, writer, designer, and producer for over 30 years. He has an annual residency at Café Carlyle in New York City and has performed at various venues across the country such as Joe's Pub, The Regency Ballroom, and several City Winery locations nationwide. *The New York Times* noted, "he qualifies as a founding father of a genre that fuses performance art, music, and stand-up comedy." He is the subject and co-creator of *Unzipped*, a documentary following the making of his fall 1994 collection which received an award at the Sundance Film Festival. He hosted his own television talk show *The Isaac Mizrahi Show* for seven years, has written three books, and has made countless appearances in movies and on television. He served as a judge on *Project Runway: All-Stars* for the series' entire seven-season run. Mizrahi has directed productions of *A Little Night Music* and *The Magic Flute* for the Opera Theatre of St. Louis. Annually, he directs and narrates his production of the children's classic *Peter and the Wolf* at the Guggenheim Museum in New York. Mizrahi has his own production company, Isaac Mizrahi Entertainment, under which he has several projects in development in television, theatre, and literature. His *New York Times* Bestselling memoir, *I.M.*, was published in February 2019.



NICOLE PEARCE (lighting design) is a multidisciplinary artist living in Queens, New York. Her work has been seen across the United States, Cuba, England, Germany, Japan, Korea, Italy, New Zealand, and Russia. The *New York Times* has stated: "The glow of Nicole Pearce's lighting on center stage creates a feeling of magic, as if the dancers are circling an unseen grail". Selected dance credits include work with Alvin Ailey American Dance Theater, American Ballet Theater, Atlanta Ballet, Dance Heginbotham, Dance Theater of Harlem, Gallim, Houston Ballet, Hubbard Street, Joffrey Ballet, Malpaso, Mark Morris Dance Group, Nederlands Dance Theater, and New York City Ballet. Selected theater and opera credits includes work with Arena Stage, Arizona Opera, Hartford Stage, Long Wharf Theater, McCarter Theater, Minnesota Opera, The Play Company, The Playwrights Realm, Philadelphia Theater Company, Opera Montreal, and Pittsburgh Public Theater. Her installation of 1,000 paintings entitled *Tiny Paintings* for Big Hearts is open to doctors, nurses, staff, and patients of Elmhurst Hospital in Elmhurst, New York.

Sincerest thanks to all the dancers for their dedication, commitment, and incalculable contribution to the work.

Follow and tag us on Facebook and Instagram @markmorrisdance
To learn more about our work and programs, please visit mmdg.org

MARK MORRIS DANCE GROUP STAFF

Artistic Director Mark Morris

Executive Director Nancy Umanoff

PRODUCTION

Director of Technical Production Johan Henckens

Lighting Supervisor Mike Faba

Audio Supervisor Carl Lund

Wardrobe Supervisor Amy Page

ARTISTIC

Director of Artistic Engagement Jen Rossi

Rehearsal Director Elisa Clark

Music Director Colin Fowler

Company Manager Julia Weber

Ballet Licensing Tina Fehlandt

Administrative Assistant Allison Antoinette Bailey

Archivist Stephanie Neel

BOARD OF DIRECTORS

Judith R. Fishman, *Chair*

David Resnicow, *Vice-Chair*

Mark Selinger, *Vice-Chair*

Isaac Mizrahi, *Secretary*

Mary Ann Casavant

Margaret Conklin

Jolie Curtsinger

Estela Díaz

Shelby Gans

Amanda Gluibizzi

York-Chi Harder

Suzy Kellems Dominik

Nicholas Ma

Timothy J. McClimon

Helen Meyer

Mark Morris

Onay Payne

Darryl Pinckney

James Seely

Nancy Umanoff

Emeritus: Jane Stine

Complete staff list at mmdg.org/staff

"Alfie" – From the Paramount Pictures Film *Alfie*. Music by Burt Bacharach. Lyrics by Hal David.
Published by Famous Music, LLC, Sony/ATV Harmony.

"What the World Needs Now", "Are You There (With Another Girl)", "Do You Know the Way to San Jose", "I'll Never Fall in Love Again", "Don't Make Me Over", "Always Something There to Remind Me", "Anyone Who Had a Heart", "Walk on By", "Message to Martha", "I Say a Little Prayer" – Written by Burt F. Bacharach and Hal David. Published by New Hidden Valley Music (ASCAP) and BMG Gold Songs (ASCAP) obo itself and Songs of Fujimusic (ASCAP).

"The Look of Love" – From the feature film *Casino Royale*. Written by Burt Bacharach and Hal David. Published by Colgems-EMI Music Inc.

The Blob" – From the Paramount Pictures film *The Blob*. Written by Burt Bacharach and Mack David. Published by Famous Music, LLC, Sony/ATV Harmony, Jobe Music, Brad Reinis Music and Debbie Grillo Music. By arrangement with Soroka Music Ltd.

"Raindrops Keep Falling on My Head" – Written by Burt F. Bacharach and Hal David. Published by New Hidden Valley Music (ASCAP), BMG Gold Songs (ASCAP) obo itself and Songs of Fujimusic (ASCAP), and Warner Chappell Music, INC.

Costume Associate to Mr. Mizrahi: Marla Wonboy

The Look of Love © 2022 *Discalced, Inc.*

Major support for the Mark Morris Dance Group is provided by members of the

GRAND DUO CIRCLE:

LEADER \$125,000+

The Beth and Ravenel Curry Foundation
Judith R. and Alan H. Fishman
Shelby and Frederick Gans
Howard Gilman Foundation
Elizabeth Amy Liebman

STAR COLLABORATOR \$50,000 - \$124,999

Bloomberg Philanthropies
Booth Ferris Foundation
Dance/NYC's New York City
Dance Rehearsal Space
Subsidy Program, made possible by
The Mellon Foundation
The Fan Fox & Leslie R. Samuels Foundation
Mrs. Candace and Dr. Vincent Gaudiani
Suzy Kellems Dominik
Laurie M. Tisch Illumination Fund
Sully Bonnelly and Robert Littman
MacMillan Family Foundation
New York City Department of Cultural Affairs in
Partnership with the City Council
The New York Community Trust
New York State Council on the Arts
with the support of the
Office of the Governor and the
New York State Legislature
PARC Foundation
The Shubert Foundation

STAR SPONSOR \$25,000 - \$49,999

Anonymous (3)
American Parkinson Disease Association, Inc.
Billy Rose Foundation
Eliot Nolen and Timothy Bradley
The Breukelein Institute
Eunice Kennedy Shriver National Institute of Child
Health and Human Development at the National
Institutes of Health
Galanthus Foundation Trust
Bernice Greene
John and Tommye Ireland (in memoriam)
Meyer Sound Laboratories, Inc.
Mark Morris
The SHS Foundation
Jamie Gorelick and Richard Waldhorn

STAR SUPPORTER \$12,000 - \$24,999

Anonymous (2)
Lucy Bowen McCauley
Susan DeLong
Doris Duke Foundation
Stephen M. Foster
The Gladys Krieble
Delmas Foundation York
Chi and Stephen Harder
Amanda Gluibizzi and Christian Kleinbub
Leatherwood Foundation
Sarabeth Berman and Evan Osnos
Onay Payne
Jolie Curtsinger Schwartz and Gabriel Schwartz
David Resnicow and Diane Solway
Cori E. Uccello
Mary Ann Casavant and Scott Wilson
June and Jeffrey Wolf

We extend our gratitude to the more than 1800 supporters not listed here whose support has been crucial to our operations.

FRIENDS OF
ZOELLNER
ARTS CENTER
LEHIGH UNIVERSITY



The Board of Trustees of Lehigh University gratefully acknowledges and recognizes the following alumni, friends, corporations and foundations for their generosity in supporting the annual campaign for the Friends of Zoellner Arts Center:

This list recognizes gifts received between July 1, 2024 and June 30, 2025. Gifts made after these dates will be updated in January and July on our digital recognition list found at zoellnerartscenter.org/support.

Leadership Funding: Victoria E. and Robert E. Zoellner '54 '15GP

Overture \$25,000+

Capital Blue Cross
Claire and Ted Diamond '37 '85H
W. Beall Fowler '59 '85P '89P '16GP 'F/S
Lehigh Valley Health Network
Anne R. Kline '81 and Geoffrey P. Pohanka

Bravo \$20,000 - \$24,999

Dexter F. & Dorothy H. Baker Foundation
The Long Family Endowment for
Community Outreach in the Arts
The Presser Foundation
Viamedia*

Spotlight \$15,000 - \$19,999

Air Products Foundation
Barbara and Harvey L. York '67 '94P '98P

Marquee \$10,000 - \$14,999

Astound*
Buzzi Unicem
Marc Falato '87
Andrea and Oldrich Foucek III '72 '05P '09P
Julie Knight - Janney Montgomery Scott LLC
Lehigh Valley Community Foundation
William Humphries
Pennsylvania Council on the Arts
PPL Electric Utilities

Ovation \$7,500 - \$9,999

Philip and Muriel Berman Center for Jewish Studies
Mid Atlantic Arts Foundation
Richard H. Johnson '73G

Producer \$5,000 - \$7,499

B. Braun
Crayola
Embassy Bank
Marlene and Arnan Finkelstein '58
Good Shepherd Rehabilitation
Hotel Bethlehem*
Lehigh University Autism Services
Enid M. and Michael J. Seiden '63 '64
Marcie and Glenn M. Yarnis '80

Maestro \$2,500 - \$4,999

Joanne '76G and Curtis H. Barnette '99H
Robert Culver '66 '95P
John L. Daniel '60 '61G '89P '19GP
Dianne & Robert C. Gerlach '70

Anne and Bob Teufel '59
WDIY*

Artist \$1,000 - \$2,499

Steven and Rosalie Aaronson
Joan E. and Bobb Carson 'F/S
John E. and Charlotte M. Collier
Comfort Suites*
Janet L. and Byron D. Cook '74
Mary T. and John Dodds
Nora A. and Mohamed S. El-Aasser 'F/S
Marsha and Tom Hersh '72 '77G
Keystone Savings Foundation
Dr. Julia E. Klees '82
Ichiko and Joseph W. Long '88 & Family
Lucille McCracken '47W '83P
Michele A. McGrath '96G
Barbara Moll '86P '21GP
Suzan R. and Martin H. Neidell '68
Quebec Government of New York
Wendy L. '83 '84G '08G and
David Thomson '83 '84G '13P '18P
Sharon A. 'F/S and Roland K. Yoshida 'F/S

Fellow \$500 - \$999

Christine Cook 'F/S
Jan and James P. Creedon '83 '91G
Beverly and Thomas Eighmy '23GP
Verna Foster
Cheryl '94G and Frank Gunter 'F/S
Lynne B. and Leon M. Harbold '59 '21GP
Michael E. Krentz '11P and
Linda J. Lowe-Krentz 'F/S, '11P
Deborah Sacarakis 'F/S
Linda and James P. Seifert '96G
Martin Q. Selzer '83
Roberta H. and
James B. Swenson '59 '15GP '17GP 'F/S
Larry A. Wehr '70 '70G
Melody K. '81G and Richard N. Weisman '00P 'F/S

Patron \$250 - \$499

Terri A. '77G and James A. Bartholomew
Joseph Clarken
Joan Cole '95
Benjamin I. Freed '00
Emilie C. '81G and Pete Heesen
Tanya and D. John McAusland '88 '26P
Ann C. '91G and
Vincent G. Munley '74 '02P '04P '05P 'F/S

Vickie Powell
Rena Segal
Noel and Mark Wilson 'F/S
John and Sandy Zengel

Friend \$100 - \$249

Janet L. '76 & Joel C. Bacon '75 '76G
Marcia Moll Barone '86 '93G '21P 'F/S and
Christopher J. Barone '86
Pearl Anderson '96G and Paul Bashus '91G
Anne Baum
Kimberly & Philip Belyaev
Heather A. '07 and Nathan A. Bohler '07
Michael R. Carbonetta '04
Timothy A. Cullen '07
Valerie and Stephen P. DeWeerth 'F/S
Elizabeth Diaz
Phyllis T. Finger '85G and Dr. H. Ellis Finger
Dr LuAnn & Dr. Robert Fletcher
Alicia Forward
Edward P. Foster '81G
Margaret B. and Edward T. Gardiner '18P
William A. Glaser, Jr. '84 '89G
Dennis Gruver
James and Linda Henry
Lisa and Carl F. Henzelman III '82 'F/S
Glen and Karen Hill
Deborah and Thomas Keller
Jody King
Wendy and Stephen Leshinskie
Daniel Lopresti 'F/S and Debbie Wesselmann
Sara B. Lupson '06 '07
Marie and John R. Maly '72
Tiara Ann Shalimar D. Maula '20G
Michael Merriman
Lynda J. and Mark A. Miller '81 '13P
Catherine and Ronald D. Mordosky
Francis G. Mullane '87G
Terri Norris
Thomas Page
Todd Patterson 'F/S
Marybeth and Thomas Pavlo
John Pilitsis
Asa L. Rubman '04
Jennifer Rupnik
Mary Jean A. Russo '88G '93G 'F/S
Pierre Samanni
Dr. Dianne E. Schellenberg, PsyD. '82
Kelvin Sealey
Janet M. Shahan
Lynne and Mark Shampain
Sharon L. Sibley-Weis '92 & Brian Weis
Glenn and Mary Simmons
Matt David Snyder
Virginia Stanglein
John Stemler
Bradley Superka 'F/S
Karen and Alexander G. Tamerler '67
William Toth
Sharon L. 'F/S and Brian Wiles-Young
Debra and Andrew Winter
Lee L. '87 '88 and Gregory T. Wolfe '87
Jill B. and David A. Yannarell '83 '93G
Christine Hughes and Daniel A. Zarrilli '97

Supporters <\$99

Amy Acarlar

Marlene and Michael Actis-Grande III '74 '03P
John Alexander
Lisa C. '04G 'F/S and Michael A. Arechiga
Judith L. '80G '87PG '15GP and
J. Richard Aronson '87PG '15
Rochelle Bala
Isabel M. Barone '21
Nancy Barry
Janet Bassett
Joseph E. Bates 'F/S
Laura M. D'Orsi '87 '27P and David F. Bauman '27P
Darla Becker Stephens
Ms. Mandi Boone
Daniel Brashler 'F/S
Noel Brown
Ms. Sandra Caffyn
Linda G. Carraghan
Cheryl A. and Michael A. Cherry
John Claus
Laura Collins
Steven E. Crouch 'F/S
Martin Curphey
Hannah C. Cwienkala '18
Linda Dicker '77G
Laura M. D'Orsi '87 '27P and David F. Bauman '27P
Sheila De Leon
Margaret Derhammer
Megan Detwiler
Marcus Dilliard
Kimberly A. Drey '23P '25P 'F/S
Jodi Eichler-Levine 'F/S
Elizabeth M. '74G and Richard C. Elterich '72
Maria Erazo
Adam Ercolani 'F/S
Sara Ercolani
Yesim Erke-Magent '97G and
Michael A. Magent '93G '97G
Susan Fagerstrom
Lynn Farley '14G 'F/S
Jacquelyn R. '04 'F/S and James P. Febbo
Ross H. Feldman '07
Jean Fennell
Michael T. Fitzgerald '23
William J. Flannery, Jr. '95
LuAnn M. Fletcher '83 '85G and Robert P. Fletcher
Velma Floyd
Hailey Foster
Christopher Frank
Barrett E. Frankel '02 '03
Ms. Diane French
Marta B. Gabriel '02G
Brett J. Gagnon '08G
Ms. Christina Gaeta
Mary A. and Thomas E. Gallagher '68G
Jamie Gerchman
Lucy H. Montgomery '90 and Thomas J. Glancey '88
Natasha Goffredo de Luna 'F/S
Katherine Hackett
Michele Hagy
Maureen and William R. Hall '75
Mary Hanisch
Krishna Hayes
Debbie Hill
Walter Hilton
Randee and Lawrence A. Hilzer '71 '00P '06P
Chris Hoban
John E. Idenden, Jr. '69 '70

Emma Iezzoni
 Reginald A. Jennings '70
 Cynthia J. 'F/S and Bob Kane
 Carolyn Katwan
 Tyler R. Katz 'F/S
 Michael Kawa
 Yaser Khalifa
 Kathleen and Alfred Konrad
 Deborah Andrus and Joshua Kovar 'F/S
 Gretchen A. '69G and Michael R. Krasley '71G '90G
 Julie A. Kusick and Randall S. Reynard '25P
 Laura G. Lawrence
 Joseph Lazar
 Richard LeComte
 Alice L. '78 and Theodore V. Lenthe '75 '12P
 Darin J. Lewis 'F/S
 Ellen Lewis 'F/S
 Sean Lewis
 Elizabeth and David Lischner
 Geraldine Livengood
 Carol A. '84G and Carlos Lopez '79G
 John Loughman
 Victoria & Edwin Lozano
 Charles Luecke
 Sandra MaGill and Terrell McMan
 Kim and John J. Marren '86
 MariCris and Lindsay McDowell
 Christine M. McNeill 'F/S
 Dr. Caroline McIntosh & Dr. Paul McIntosh
 Norman P. Melchert 'F/S
 Mary S. Mesaros '92G
 Karie Ann Middleton
 Ruth Elizabeth B. Miller '26P '29P 'F/S and
 Brian A. Miller
 Edwena Miller
 Elizabeth Young Miller
 Mary Jo Miserendino
 Lucy H. Montgomery '90 and Thomas J. Glancey '88
 Sheila Moyer
 Nancy Jo Mulry
 Joseph L. Murphy '96G '05P
 Andrea Odom
 Debra & James Orben
 Linda & John Ostapovich
 Debra A. Ott
 Donald Outing '22P 'F/S
 Dimitra 'F/S and George Panagopoulos '29P
 Mr. John Pfeiffer
 Gillian and Scott V. Pidcock
 Ruth H. '79 and John Plucinski '11P

Marina Rasina
 A. Mark Rentschler
 Izzy Rizera
 George Roeser
 Ms. Pattiann Rohrbach
 Beth and Joel C. Rosenfeld '04G '07P
 Henry Ruiz
 Jennifer L. Schau Wilkinson '05 '06 '06G
 Catherine M. and Edward F. Schorn '24P
 Seth A. Schran '01
 Michael K. Scroggs 'F/S
 Sean Shappell 'F/S
 Chris Sheridan
 Nicholas Shuleski
 Laura Smarandescu 'F/S
 Kimberly Smith 'F/S
 Tiffany Smith
 Janice S. Spirk '79G '25P
 Kelly B. 'F/S and Andrew L. Stazi
 Jerrilyne Stewart 'F/S
 Eugene Stokes
 David Torrey
 Kathleen Truskowski
 Barbara A. Turanchik '75 'F/S
 Raymond Ulmer II
 Maki Uragami
 Kristen and Nathaniel N. Urban 'F/S
 Jane & Gerry Uva
 Kathleen and William F. Van Loan III '82
 Maureen Valente
 Beatrice Vassil
 Susan A. 'F/S and Anthony C. Verbalis, Jr. '67
 Susan Vitez
 Sydney E. Weaver '25
 Judith O. Pennington and Steven H. Weintraub 'F/S
 Rosemarie Wertman
 Vassie C. Ware 'F/S and William J. Taylor
 Susanna Williams
 Gretchen M. Vasquez 'F/S
 Craig Wurst
 Karen & Edwin E. Yeakel '79G

Advisory Council

Anne Baum
 Marc Falato '87
 Oldrich Foucek III '72 '05P '09P, chair
 Ellen Baker Ghelardi
 Michele McGrath
 Maddie H Scheler '08 '09G

ENDOWMENTS:

Anne R. Kline '81 Endowed Fund for Creatively Integrated Programming
 Marc A. Falato '87 Presenting Series Endowment Fund
 The Long Family Endowment for Community Outreach in the Arts
 Claire and Ted Diamond '37 '85H Endowment
 Zoellner Arts Center Opportunity Fund
 Lancaster Fund
 The Arnan '58 & Marlene Finkelstein Endowment Fund
 Zoellner Arts Center Endowment
 Zoellner Advisory Council Director's Endowment
 Klees Family Instrumental Ensemble Endowed Fund

**Trade partner*

List complete as of June 30, 2025 · Report errors or omissions to inzactix@lehigh.edu or (610) 758-2787, x0

Gastropub fare meets the storied traditions of Lehigh University



located in the historic Clayton University Center
on the Lehigh Campus

Show us your
ticket
for 10% off of
your food
purchase



Menus, Directions
and More



pub.lehigh.edu



Proud Sponsor of
Zoellner Arts Center

Navigating Marketing Can Be Tricky

Viamedia Can Help You Navigate Through the Digital Landscape

Viamedia has the power to precisely target your desired audience using marketing solutions which utilize television cable networks, and online, through PCs, tablets, and mobile devices, placing your business in front of the right audience, with the right message, at the right time... *every time.*



It's All About the Audience!


viamedia

A partner with:

SERVICE ELECTRIC
CABLE TV & COMMUNICATIONS



Blue Ridge

SERVICE ELECTRIC
EST. 1948 CABLEVISION

610.625.3200 | viamediatv.com

Our Promise to Donors and Fundholders

We **CONNECT** you to community needs by providing a highly personalized and effective approach to philanthropy.

We **GROW** a stronger community by helping you fulfill your charitable vision and grow a charitable legacy.

We **FUND** nonprofits and partner in the community to improve the quality of life in our region as a trusted and respected grantmaker.

www.lvcfoundation.org



WDIY 88.1

LEHIGH VALLEY PUBLIC RADIO **n p r**

Listen to WDIY
on your phone
with our new app



Enjoy live broadcasts and
browse our digital archive
wherever you go

NPR News
Public Affairs
A Diverse Mix of Music



Download on the
App Store

GET IT ON
Google Play



Comfort™
SUITES
by CHOICE HOTELS

Behind every
great day is a
great night.



At Comfort Suites® we work hard to help you feel refreshed, so you can be ready to take on your day.

- Wake up refreshed thanks to premium bedding with soft and firm pillows.
- Fuel your day with hearty and healthy breakfast choices.
- Stay connected with fast & free Wi-Fi.

**Comfort Suites Bethlehem Near
Lehigh University and LVI Airport**
120 W. Third St.
Bethlehem, PA 18015
610.882.9700

Book your room
with us today at
ComfortSuites.com



Lights, Camera, *Engage*

**WITNESS THE POWER
OF VIDEO MARKETING**
with expertly crafted
productions. Boost
engagement and leave
a lasting impression on
your audience.

www.asrmediaproductions.com

INFORMATION

CAN'T MAKE IT? EXCHANGE OR DONATE YOUR TICKETS.

Contact us before the show to either **exchange** for another event, or convert the value of your tickets to a charitable contribution to Zoellner Arts Center. Subscribers and Friends may exchange for free, just \$1 per ticket for all others. Patrons are responsible for any difference in ticket price, exchanges must occur within event category (e.g., Music Dept. ticket for Music Dept. ticket). Excludes rental events. No refunds.

PARKING IS FREE in the garage attached to the center for all Presenting Series, Lehigh University Music Dept. and Dept. of Theatre events (excluding some weekday morning events, Christmas Vespers in Packer Chapel and Dolce in Lamberton Hall). Please note, there may be a parking charge for non-Zoellner sponsored events.

GROUPS SAVE UP TO 15% Just buy 10 or more tickets to a performance. Orders incur a one-time per-performance fee of \$6 per group order in lieu of per-ticket fees.

TAXES AND FEES


Single tickets ordered by phone or online carry fees ranging from \$2.25-\$8.50 per ticket. Tickets purchased in-person may carry fees of up to 50 cents per ticket. The City of Bethlehem Amusement tax is 5% on tickets above \$10, with a cap of \$2 per ticket. Additional delivery charges may apply, check online for details.


OUR GIFT CERTIFICATES NEVER EXPIRE.

Purchase these at Ticket Services or online
in any amount and give
the gift of entertainment.

Certificates cannot be redeemed for rental events.

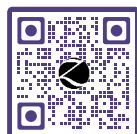
CONNECT WITH US!

 ZoellnerArts

 zoellnerartscenter

 zoellnerarts

 inzactix@lehigh.edu



GO TO WEBSITE

zoellnerartscenter.org

[#artshaveimpact](https://www.instagram.com/artshaveimpact)

HOUSE NOTES

Concessions: Food and beverage service will likely be limited. Check the “Know Before You Go” email sent to ticket holders the week of the show. Be sure to give Ticket Services your email.

Please silence all mobile devices upon entering the theatre.

To leave theatres during performances, use the rear doors, if you are able, to minimize disruption of performance.

Late seating occurs at suitable intervals. While waiting, you may watch performance on lobby monitors.

Lost & Found: Contact Ticket Services. Not responsible for lost or stolen items.

Families with Children:

We welcome children of all ages to our Family Series shows. For performances not listed as Family Series in our brochure, we recommend that attendees be ages four and over. Everyone entering the theatre must have a ticket, and sit quietly in a seat throughout the performance. There are closed-circuit monitors in the lobby which supervised children may use to watch performances if they need a break.

Accessible seating can be requested when purchasing tickets. Accessible parking is on levels 1 and 3 in the parking garage.

Free assistive-listening devices are available through Ticket Services for amplified performances.

Free Sensory Kits are available to checkout, please inquire at the box office or with an usher.

Questions about your tickets?

Contact Ticket Services:

Phone: 610-758-2787 ext. 0
Email: inzactix@lehigh.edu

Box Office Hours:

TUE 12-6; WED-FRI 12-5
For ticketed events: SAT 2 hours prior to curtain, 90 mins. all other days.

All programs and artists are subject to change. In the event of a cancellation or material change, we will make every effort to contact all ticket holders. We must reserve the right to make any changes whatsoever in the event owing to any unforeseen or unavoidable cause or to cancel the event for any reason beyond our control without being liable to pay any ticket holder compensation for damages other than a ticket of comparable value to an event (based on availability).

Video recording or photography may occur for this performance that might include images of audience members. Your attendance at today's performance grants permission for further usage of such images.

ZOELLNER ARTS CENTER

at LEHIGH UNIVERSITY

2025 FALL SEASON AT A GLANCE



LUVME	SAT SEP 6
THE BACON BROTHERS	SUN SEP 7
MORGAN FREEMAN'S SYMPHONIC BLUES EXPERIENCE	FRI SEP 12
HELL'S KITCHEN FUNK ORCHESTRA	SAT SEP 13
ATTACCA QUARTET	SUN SEP 14
NOLI TIMERE	SAT SEP 20
PASSAGE	OCT 3 - 11
SPHINX VIRTUOSI	FRI OCT 3
KURBASY	SUN OCT 5
SOWETO GOSPEL CHOIR	SAT OCT 11
MARK MORRIS DANCE GROUP	FRI OCT 17
FREQUENCY STRING QUARTET	SUN OCT 19
CHORAL ARTS	FRI OCT 24
PHILHARMONIA ORCHESTRA	SUN OCT 26
DON'T LET THE PIGEON DRIVE THE BUS! THE MUSICAL!	
FAMILY DAY  FAMILY SERIES	SAT NOV 1
 STUDENT JAZZ CONCERT	SAT NOV 8
SCOTT BRADLEE'S POSTMODERN JUKEBOX	THU NOV 13
THE FLICK	NOV 14 - 21
WIND ENSEMBLE	SUN NOV 16
JAZZ REPERTORY ORCHESTRA	FRI NOV 21
ACADEMY OF VOCAL ARTS	SUN NOV 23
PHILHARMONIC	FRI DEC 5, SAT DEC 6
CHORAL ARTS 	SUN DEC 7
THE NUTCRACKER	SAT DEC 13, SUN DEC 14
VIENNA BOYS CHOIR	FRI DEC 19
SEÁN HEELY'S CELTIC CHRISTMAS	SAT DEC 20

KEY: **PRESENTING SERIES** | **MUSIC DEPARTMENT** | **DEPARTMENT OF THEATRE**

